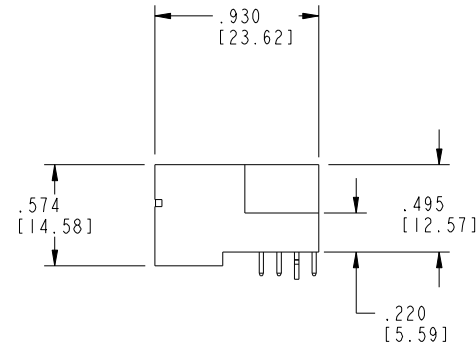
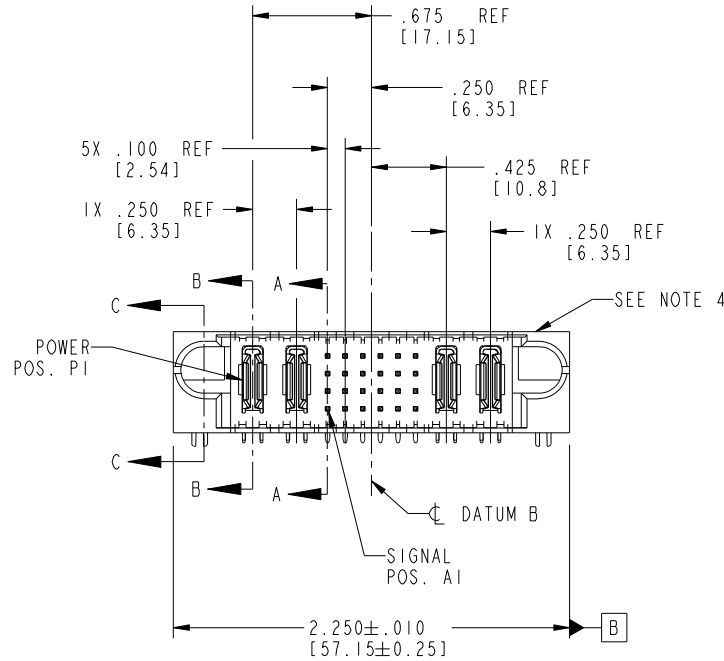


Tous droits strictement réservés. Reproduction ou communication à des tiers interdite sous quelque forme que ce soit sans autorisation écrite du propriétaire. Propriété de c.FCI. Droits de reproduction FCI.



All rights strictly reserved. Reproduction or issue to third parties in any form whatever is not permitted without written authority from the proprietor. Property of FCI. Copyright FCI.

PRODUCT NO.	ROWS	POWER		SIGNAL						POWER		E2			
		E1	P1	P2	1	2	3	4	5	6	P3		P4		
51730-119 NOTE ③	D C B A	HA	PA	PA	UUUUUU	TTTTTT	SSSSSS	RRRRRR	UUUUUU	TTTTTT	SSSSSS	RRRRRR	PA	PA	HA



CODE	DIM "M" MATING LENGTH	CONTACT TYPE
U	.270 [6.86]	SIGNAL
T	.270 [6.86]	SIGNAL
S	.270 [6.86]	SIGNAL
R	.270 [6.86]	SIGNAL
PA	N/A [N/A]	POWER
HA	N/A [N/A]	HOLD-DOWN
F	.220 [5.59]	SIGNAL

mat'l code				SEE NOTE 2		tolerances unless otherwise specified		CUSTOMER		FCI	
ltr	ecn no.	dr	date	linear	.XX±.01/0.X±0.3	projection		COPY		www.fciconnect.com	
A	DG05-0543	Ryan	12/13/05	angles	.XXX±.005/0.XX±0.13	INCH/MM		title		2P + 24S + 2P	
B	DG08-0253	SH	09/13/08	dr	.XXX±.0020/0.XXX±0.051	scale		product family		PwrBlade	
				enr	0°±2°	1:1		size		213	
				chr	Ryan.Yuan 12/13/05			dwg no		sheet	
				appd	Sally.Luo 12/19/05			51730-119		1 of 4	
					David.Su 12/13/05						
					JOSEPH HSIA 12/13/05						
sheet index	revision sheet	B	B	B	B						
		1	2	3	4						

cage code 22526

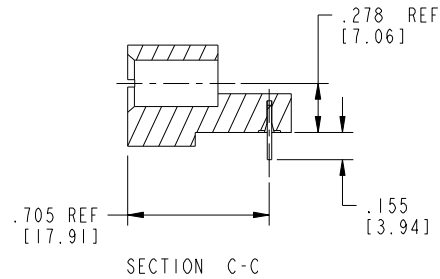
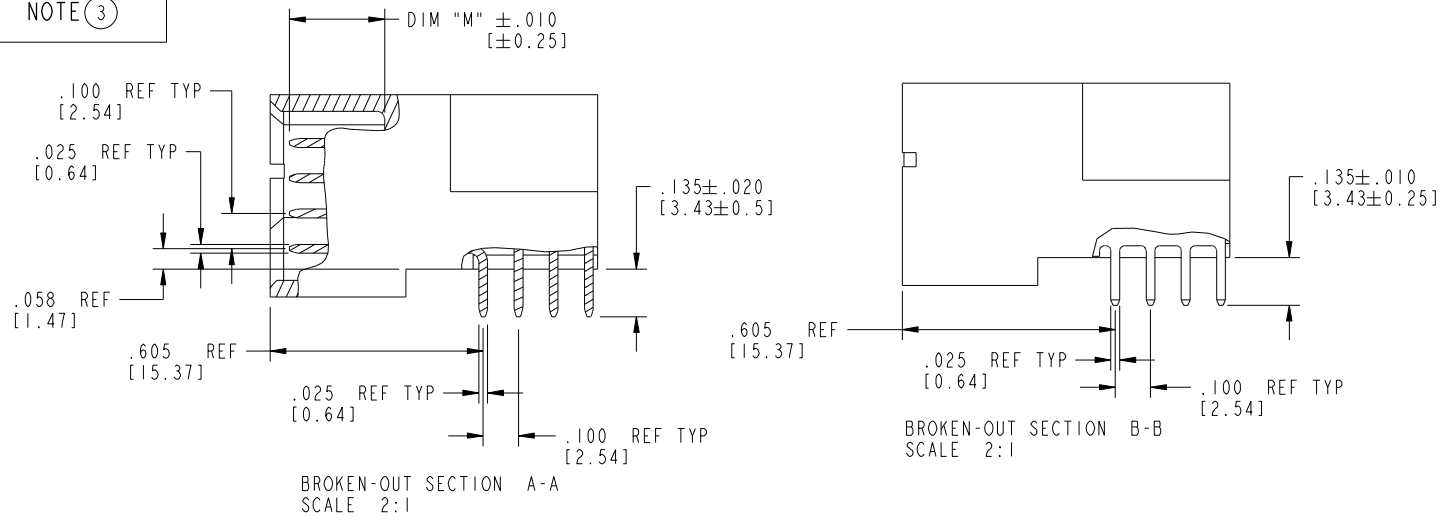
Pro/E

Tous droits strictement réservés. Reproduction ou communication à des tiers interdite sous quelque forme que ce soit sans autorisation écrite du propriétaire. Propriété de c FCI. Droits de reproduction FCI.



All rights strictly reserved. Reproduction or issue to third parties in any form whatever is not permitted without written authority from the proprietor. Property of FCI. Copyright FCI.

PRODUCT NUMBER
51730-119--
NOTE ③



mat'l code		SEE NOTE 2		tolerances unless otherwise specified		CUSTOMER		FCI	
ltr	ecn no.	dr	date	linear	.XX±.01/0.X±0.3	COPY		www.fciconnect.com	
B				projection	.XXX±.005/0.XX±0.13	title		2P + 24S + 2P	
				angles	.XXX±.0020/0.XXX±0.051	RIGHT ANGLE SOLDER HEADER		product family	
				dr	0°±2°	INCH/MM		PwrBlade	
				enr	Ryan.Yuan 12/13/05	scale		code	
				chr	Sally.Luo 12/19/05	1:1		213	
				appd	David.Su 12/13/05	A		sheet	
					JOSEPH.HSIA 12/13/05	51730-119		2 of 4	
sheet index	revision sheet								

Pro/E

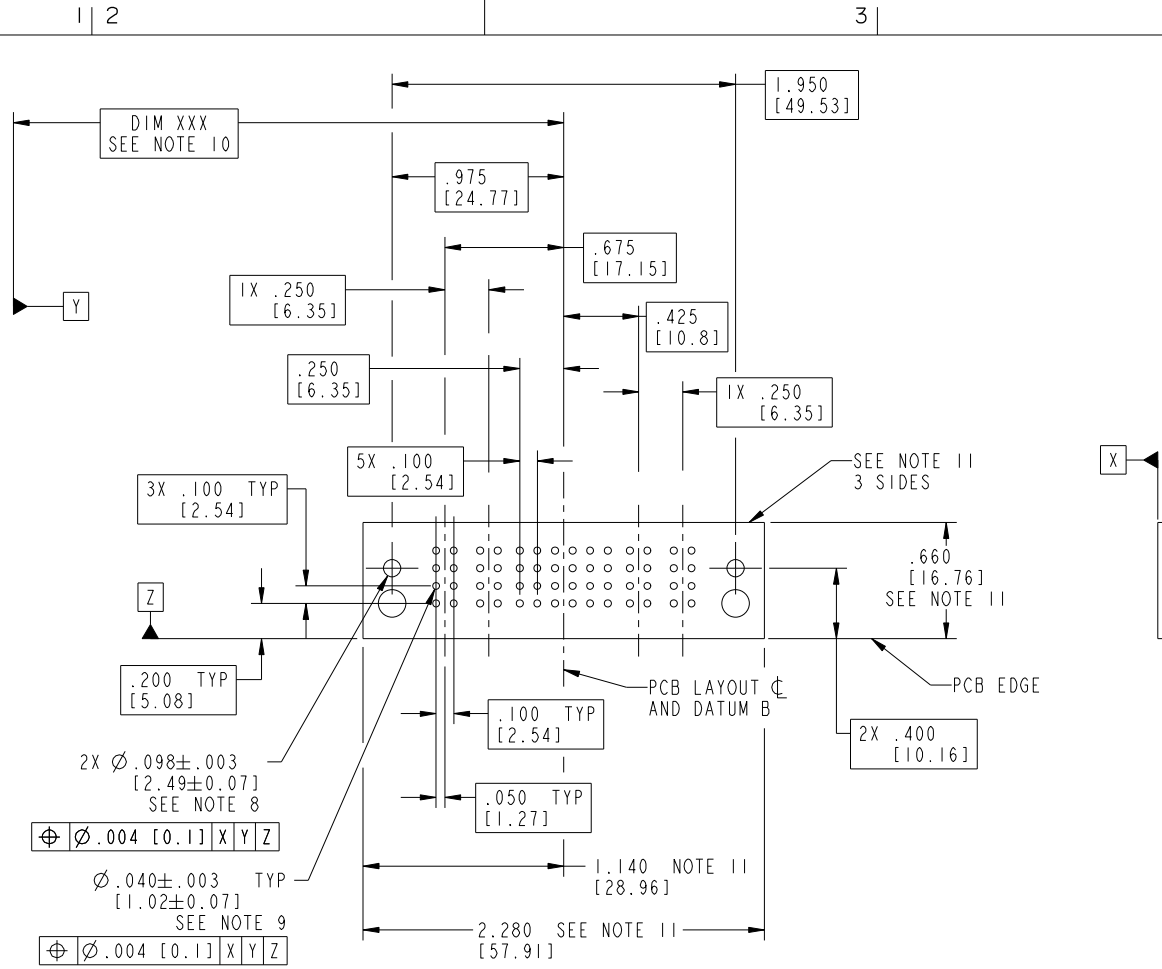
cage code 22526

Tous droits strictement réservés. Reproduction ou communication à des tiers interdite sous quelque forme que ce soit sans autorisation écrite du propriétaire. Propriété de c.FCI. Droits de reproduction FCI.



All rights strictly reserved. Reproduction or issue to third parties in any form whatever is not permitted without written authority from the proprietor. Property of FCI. Copyright FCI.

PRODUCT NUMBER
51730-119--
NOTE ③



RECOMMENDED PCB LAYOUT

mat'l code		SEE NOTE 2		tolerances unless otherwise specified		CUSTOMER		FCI		www.fciconnect.com	
ltr	ecn no.	dr	date	linear	.XX±.01/0.X±0.3	COPY		title			
B					.XXX±.005/0.XX±0.13	projection		2P + 24S + 2P			
				angles	.XXX±.0020/0.XXX±0.051	INCH/MM		RIGHT ANGLE SOLDER HEADER			
				dr	0°±2°	scale		product family		code	
				enr	Ryan.Yuan 12/13/05	1:1		PwrBlade		213	
				chr	Sally.Luo 12/19/05			size		sheet	
				appd	David.Su 12/13/05			dwg no		3 of 4	
					JOSEPH.HSIA 12/13/05			51730-119			
sheet index	revision sheet										

cage code 22526

Pro/E

Tous droits strictement reserves. Reproduction ou communication a des tiers interdite sous quelque forme que ce soit sans autorisation écrite du propriétaire. Propriete de c FCI. Droits de reproduction FCI.

All rights strictly reserved. Reproduction or issue to third parties in any form whatever is not permitted without written authority from the proprietor. Property of FCI. Copyright FCI.

PRODUCT NUMBER
51730-119_-
NOTE ③

NOTES:

1. DIMENSIONS AND TOLERANCES ARE IN ACCORDANCE WITH ASME Y14.5M, 1994 UNLESS OTHERWISE SPECIFIED.

CONNECTOR NOTES:

② HOUSING MATERIAL: UL 94 V-0 GLASS FILLED HIGH-TEMP THERMOPLASTIC
POWER CONTACT MATERIAL: COPPER ALLOY
SIGNAL PIN MATERIAL: COPPER ALLOY

3. PLATING:
③ SEE ITEM 1 & 2 IN PRINT 10064183 FOR PLATING SPEC OF 51730-119 AND 51730-119LF RESPECTIVELY

④ MANUFACTURER'S NAME, P/N, AND DATE CODE TO APPEAR ON THIS SURFACE.

5. PRODUCT SPECIFICATION GS-12-149.
APPLICATION SPECIFICATION BUS-20-067.

6. PACKAGED IN TRAYS.

PCB NOTES:

7. ALL HOLE DIAMETERS ARE FINISHED HOLE SIZE.

⑧ MOUNTING HOLES, WHERE APPLICABLE, ARE UNPLATED.

⑨ $\varnothing .0453 \pm .0010$ [1.151 ± 0.025] DRILLED HOLES PLATED WITH
.0003 [0.008] MIN SnPb OVER .001 [0.03]
TO .003 [0.08] Cu PLATING TO ACHIEVE
 $\varnothing .040 \pm .003$ [1.02 ± .07] HOLE.

⑩ "DIM XXX" TO BE DETERMINED BY THE CUSTOMER.

⑪ CONNECTOR KEEP-OUT ZONE.

12: A ③ SYMBOL WILL BE NEXT TO ANY DIMENSION, VIEW, OR NOTE WHICH HAS BEEN MODIFIED WITH CURRENT DRAWING VERSION.

mat'l code		SEE NOTE 2		tolerances unless otherwise specified		CUSTOMER		FCI		www.fciconnect.com	
ltr	ecn no.	dr	date	linear	.XX±.01/0.X±0.3	COPY					
B				projection	.XXX±.005/0.XX±0.13	projection		title 2P + 24S + 2P			
				angles	.XXX±.002/0.XXX±0.051	INCH/MM		RIGHT ANGLE SOLDER HEADER			
				dr	0° ± 2°	INCH/MM		product family		PwrBlade	code
				enr	Ryan.Yuan 12/13/05	scale		size		dwg no	213
				chr	Sally.Luo 12/19/05	1:1		A		51730-119	sheet
				appd	David.Su 12/13/05						4 of 4
					JOSEPH HSIA 12/13/05						
sheet index	revision sheet										

cage code 22526

Pro/E