

NOTE 1. LEAD CO-PLANALITY INCLUDE REINFORCED METAL FITTINGS SHALL BE 0.1 MAX.  
 2. WHEN THIS CONNECTOR MATES WITH DF14-S-1.25C, THE MATTING LENGTH IS 7.3mm.  
 3. FOR CONNECTORS, 2 OR 3 CONTACTS, SIMPLIFIED LOCK HOLE SHALL BE SET AT THE CENTER OF HOUSING.

TO	
----	--

2 APPLICATION PATTERN

RECOMMENDED PATTERN

PART NO.	HRS NO.	CONTACTS	A	B	C	D	E
DF14A-2P-1.25H(56)	CL538-0033-3-56	2	7.45	1.25	2.95	3.65	8.05
DF14A-3P-1.25H(56)	CL538-0034-6-56	3	8.70	2.50	4.20	4.90	9.30
DF14A-4P-1.25H(56)	CL538-0035-9-56	4	9.95	3.75	5.45	6.15	10.55
DF14A-5P-1.25H(56)	CL538-0036-1-56	5	11.20	5.00	6.70	7.40	11.80
DF14A-6P-1.25H(56)	CL538-0037-4-56	6	12.45	6.25	7.95	8.65	13.05
DF14A-7P-1.25H(56)	CL538-0038-7-56	7	13.70	7.50	9.20	9.90	14.30
DF14A-8P-1.25H(56)	CL538-0039-0-56	8	14.95	8.75	10.45	11.15	15.55
DF14A-9P-1.25H(56)	CL538-0040-9-56	9	16.20	10.00	11.70	12.40	16.80
DF14A-10P-1.25H(56)	CL538-0041-1-56	10	17.45	11.25	12.95	13.65	18.05
DF14A-15P-1.25H(56)	CL538-0114-3-56	15	23.70	17.50	19.20	19.90	24.30
DF14A-20P-1.25H(56)	CL538-0119-7-56	20	29.95	23.75	25.45	26.15	30.55
DF14A-25P-1.25H(56)	CL538-0124-7-56	25	36.20	30.00	31.70	32.40	36.80
DF14A-30P-1.25H(56)	CL538-0045-2-56	30	42.45	36.25	37.95	38.65	43.05

NO.	MATERIAL	FINISH, REMARKS	NO.	MATERIAL	FINISH, REMARKS
2	BRASS	CONTACT AREA:GOLD PLATED 0.1μm min LEAD AREA:TIN-COPPER PLATED 1μm min	5	POLYESTER	CLEAR(COVER TAPE)
1	POLYAMIDE	UNDER PLATING:NICKEL PLATED 1μm min BEIGE, UL94V-0	4	A-PET	CLEAR (EMBOSSED CARRIER TAPE)
			3	PHOSPHOR BRONZE	TIN-COPPER PLATED 1μm min UNDER PLATING:NICKEL PLATED 0.5μm min

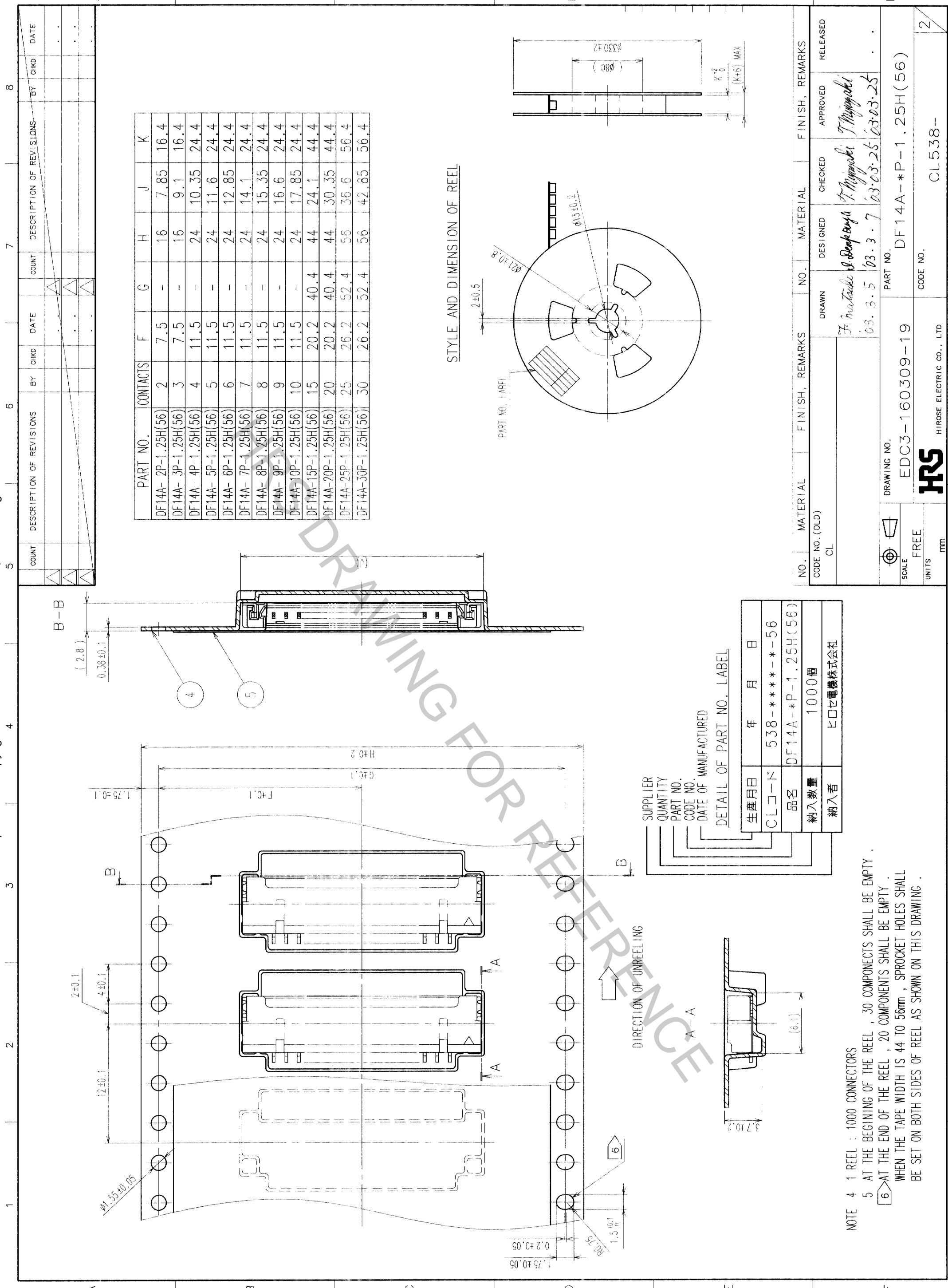
CODE NO. (OLD)	CL	DRAWN	DESIGNED	CHECKED	APPROVED	RELEASED
		F. Mitsuoka	I. Doronaga	T. Miyazaki	T. Miyazaki	
		03.3.5	03.3.17	03.03.25	03.03.25	

DRAWING NO.	PART NO.
EDC3-160309-19	DF14A-*P-1.25H(56)

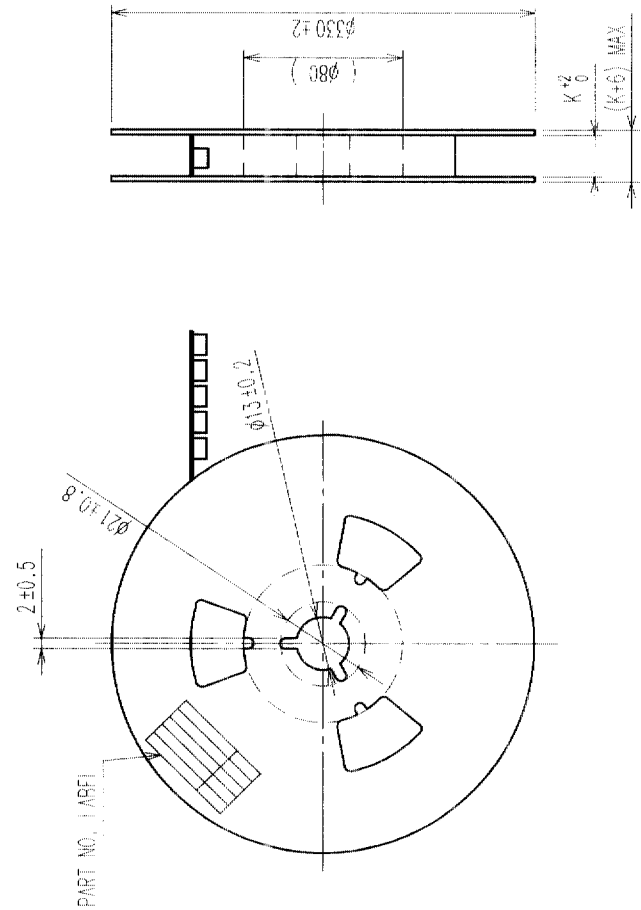
  

SCALE	UNITS	CODE NO.
5 : 1	mm	CL538-



PART NO.	CONTACTS	F	G	H	J	K
DF14A-2P-1.25H(56)	2	7.5	-	16	7.85	16.4
DF14A-3P-1.25H(56)	3	7.5	-	16	9.1	16.4
DF14A-4P-1.25H(56)	4	11.5	-	24	10.35	24.4
DF14A-5P-1.25H(56)	5	11.5	-	24	11.6	24.4
DF14A-6P-1.25H(56)	6	11.5	-	24	12.85	24.4
DF14A-7P-1.25H(56)	7	11.5	-	24	14.1	24.4
DF14A-8P-1.25H(56)	8	11.5	-	24	15.35	24.4
DF14A-9P-1.25H(56)	9	11.5	-	24	16.6	24.4
DF14A-10P-1.25H(56)	10	11.5	-	24	17.85	24.4
DF14A-15P-1.25H(56)	15	20.2	40.4	44	24.1	44.4
DF14A-20P-1.25H(56)	20	20.2	40.4	44	30.35	44.4
DF14A-25P-1.25H(56)	25	26.2	52.4	56	36.6	56.4
DF14A-30P-1.25H(56)	30	26.2	52.4	56	42.85	56.4

STYLE AND DIMENSION OF REEL



SUPPLIER  
QUANTITY  
PART NO.  
CODE NO.  
DATE OF MANUFACTURE

DETAIL OF PART NO. LABEL

生産月日	年	月	日
CLコード	538-**-**-56		
品名	DF14A-P-1.25H(56)		
納入数量	1000個		
納入者	ヒロセ電機株式会社		

NOTE 4 1 REEL : 1000 CONNECTORS  
 5 AT THE BEGINNING OF THE REEL, 30 COMPONENTS SHALL BE EMPTY.  
 6 AT THE END OF THE REEL, 20 COMPONENTS SHALL BE EMPTY.  
 WHEN THE TAPE WIDTH IS 44 TO 56mm, SPROCKET HOLES SHALL BE SET ON BOTH SIDES OF REEL AS SHOWN ON THIS DRAWING.

NO.	MATERIAL	FINISH, REMARKS	NO.	MATERIAL	FINISH, REMARKS
CODE NO. (OLD) CL			DRAWN F. Mustaki S. Sempaya	CHECKED T. Miyajima	APPROVED T. Miyajima
SCALE FREE			DESIGNED 03.3.5		RELEASED 03.03.25
UNITS mm			DATE OF MANUFACTURE 03.3.7		
DRAWING NO. EDC3-160309-19			PART NO. DF14A-P-1.25H(56)		
HIROSE ELECTRIC CO., LTD.			CODE NO. CL538-		

TO