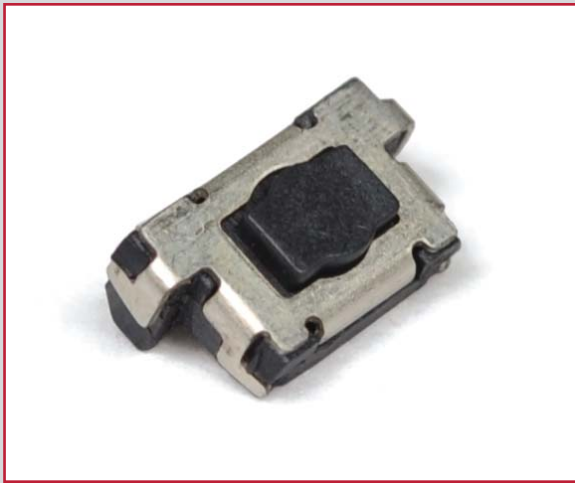
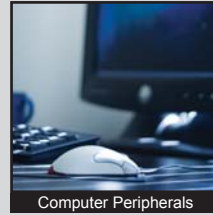


APPLICATIONS / MARKETS



Audio / Visual



Computer Peripherals



Consumer Electronics



Instrumentation



Medical Equipment



Telecommunication

RoHS

SPECIFICATIONS

Electrical Rating: 50mA, 12VDC
Life Expectancy: up to 1,000,000 Cycles
Contact Resistance: 100mΩ Max.
Insulation Resistance: 100MΩ Min. at 500VDC
Dielectric Strength: 250VAC for 1 Minute
Operating Temperature: -40°C to 85°C
Operating Force: 120gf ± 50gf (1,000,000 cycles)
 240gf ± 60gf (500,000 cycles)
Travel: 0.15mm ± 0.10mm

Function: SPST, Off-(On), Momentary

FEATURES & BENEFITS

- Up to 1,000,000 cycle life expectancy
- Right angle edge mounted design
- Multiple force options

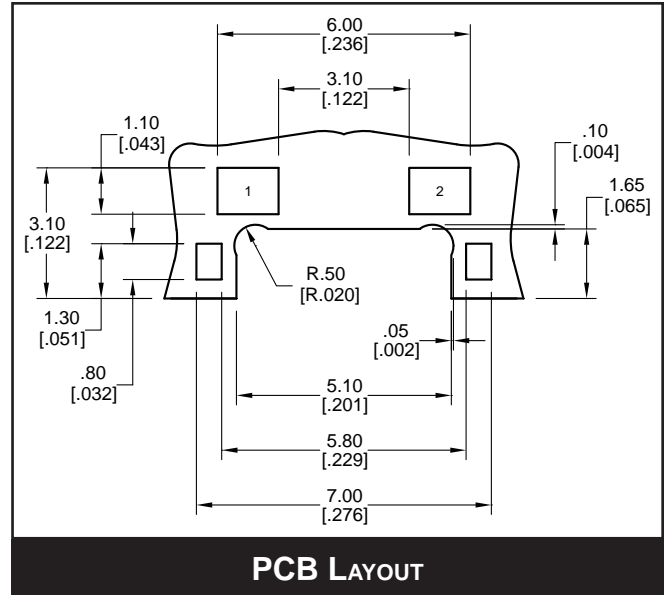
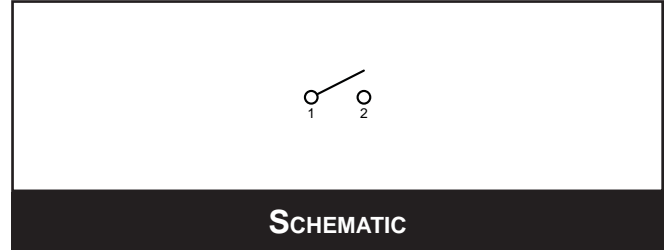
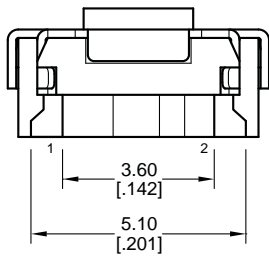
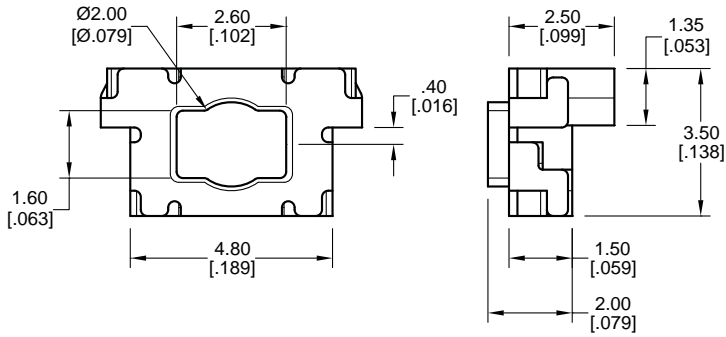
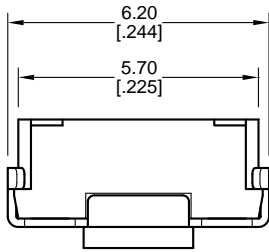
PART NUMBER CONFIGURATOR

Series	Model	Actuator	Force	Plating	Termination
TL	4100	A - 2.00	F120 - 120 grams F240 - 240 grams	Q - Silver	G - Gullwing

Specifications subject to change without notice



BODY DIMENSIONS



- ANTI-VANDAL SWITCHES
- DETECTOR SWITCHES
- DIP SWITCHES
- KEYLOCK SWITCHES
- NAVIGATION SWITCHES
- PUSHBUTTON SWITCHES
- ROCKER SWITCHES
- ROTARY SWITCHES
- SLIDE SWITCHES
- SNAP ACTION SWITCHES
- TACTILE SWITCHES
- TOGGLE SWITCHES
- CAP OPTIONS

