

PowerPlane Bus Bar Power Connector Family



PowerPlane Bus Bar Power Connectors deliver high-current performance along with various configurations and feature options, making them applicable for a wide range of power-distribution applications

Features and Benefits

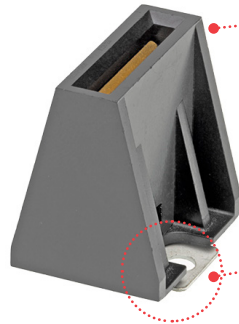
320.0A Vertical Bus Bar Connector (Series 45711)

Float-mount design available

Allows up to 6 degrees of misalignment, facilitating blind mating in deep racks

Isolated left and right contacts

Meets true hot-plugging requirements



Mating with a standard 25.40 by 3.18mm thick bus bar tab

Facilitates mating with de facto output blades for typical power supply applications

Mounts to a bus bar via two holes using customer-supplied machine screws

Screw-mount design for secure fastening to bus bar

Low voltage drop

For minimal heat generation



The PowerPlane Bus Bar Power Connector Family, from left to right: 60.0A Low-Profile Connector, 180.0A Bus Bar Receptacle, 320.0A Vertical Bus Bar Connector

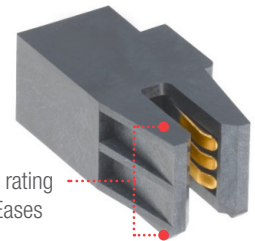
180.0A Bus Bar Receptacle (Series 172201)

Right-angle entry of the connector mates with a standard 25.40 by 3.18mm thick bus bar tab

Facilitates mating with de facto output blades for typical power supply applications

Low-profile design (13.61mm)

Delivers high-current rating in a small package. Eases space constraints



Press-fit and through-hole versions available

Meets different application needs

Screw-mount versions available

Securely fastens connector to PCB

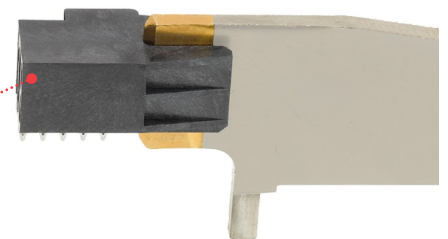


Press-fit and through-hole versions available

Meets different application needs

Endures 200 mating cycles

Provides durability for high-mating cycle applications



Gold-plating on mating surfaces

Ensures electrical performance. Enable high mating cycles

PowerPlane Bus Bar Power Connector Family



Applications

Consumer

Power connections

Data Centers

Routers

Networking

Network interfaces

Networking equipment

Power supplies

Rack mount servers

Telecommunications

Base stations

Routers

Switches

Industrial

Commercial Vehicle

Energy Storage Systems



Industrial Automation



Telecommunication Base Station



Rack Mount Server

Specifications

REFERENCE INFORMATION

Packaging: Tray

UL File No.: 1977

CSA File No.: C22.2 No. 182.3-M1987

Mates With: Bus Bar

Designed In: Millimeters

RoHS: Yes

Halogen Free: No

ELECTRICAL

Voltage (max.): 600V AC

Current (max.):

Series 45711 – 320.0A

Series 172201 – 180.0A

Series 173708 – 60.0A

Contact Resistance (max.):

Series 45711 – 0.60 milliohm

Insulation Resistance (min.): 5000 Megohms

MECHANICAL

Durability (min.):

Series 45711 – 50 Cycles

Series 172201 – 25 Cycles

Series 173708 – 200 Cycles

PHYSICAL

Housing: High-Temperature Plastic

Contact: Copper Alloy

Mating Surfaces:

Series 45711 – Silver

Series 172201 – Silver

Series 173708 – Gold

Mounting Tabs:

Series 45711 – Tin

Series 172201 – Tin (on PC tail)

Series 173708 – Tin (on PC tail)

Underplating: Nickel

Operating Temperature: -40 to +105°C

Ordering Information

Series No.	Component	Configuration	Mounting Style
45711	Bus Bar Connector	Vertical	Screw Mount
172201		Right Angle	Press Fit
173708	Low-Profile Bus Bar Connector		Right Angle
		Press Fit	
			Through Hole

www.molex.com/link/busbar.html

Molex is a registered trademark of Molex, LLC in the United States of America and may be registered in other countries; all other trademarks listed herein belong to their respective owners.