

## Printed-circuit board connector - IPC 35 HC/ 5-STGF-15,00 - 1784884

Please be informed that the data shown in this PDF Document is generated from our Online Catalog. Please find the complete data in the user's documentation. Our General Terms of Use for Downloads are valid (<http://phoenixcontact.com/download>)



Plug component, Nominal current: 125 A, Rated voltage (III/2): 1000 V, Number of positions: 5, Pitch: 15 mm, Connection method: Screw connection, Color: green, Contact surface: Silver

### Product Features

- Low insertion and withdrawal forces for user-friendly device connection
- Connection capacity of up to 35 mm<sup>2</sup>
- Current carrying capacity of up to 125 A
- Unlimited 600 V UL approval
- Standard with screw flange for reliable connection even in applications subject to vibration
- Maximum contact reliability due to integrated double steel spring
- Inverted high-capacity plugs with pin contact for touch-proof device outputs or free-hanging cable/cable connections



### Key Commercial Data

Packing unit	1 pc
Minimum order quantity	10 pc
Custom tariff number	85366990
Country of origin	Poland

### Technical data

#### Dimensions

Length	58 mm
Height	40 mm
Pitch	15.00 mm
Dimension a	60 mm

#### General

Range of articles	IPC 35 HC/...STGF
Insulating material group	I

# Printed-circuit board connector - IPC 35 HC/ 5-STGF-15,00 - 1784884

## Technical data

### General

Rated surge voltage (III/3)	8 kV
Rated surge voltage (III/2)	8 kV
Rated surge voltage (II/2)	8 kV
Rated voltage (III/3)	1000 V
Rated voltage (III/2)	1000 V
Rated voltage (II/2)	1000 V
Connection in acc. with standard	EN-VDE
Nominal current $I_N$	125 A
Nominal cross section	35 mm <sup>2</sup>
Maximum load current	125 A
Insulating material	PA
Flammability rating according to UL 94	V0
Stripping length	20 mm
Number of positions	5
Screw thread	M5
Tightening torque, min	2.5 Nm
Tightening torque max	4.5 Nm

### Connection data

Conductor cross section solid min.	0.5 mm <sup>2</sup>
Conductor cross section solid max.	35 mm <sup>2</sup>
Conductor cross section flexible min.	0.5 mm <sup>2</sup>
Conductor cross section flexible max.	35 mm <sup>2</sup>
Conductor cross section flexible, with ferrule without plastic sleeve min.	1 mm <sup>2</sup>
Conductor cross section flexible, with ferrule without plastic sleeve max.	35 mm <sup>2</sup>
Conductor cross section flexible, with ferrule with plastic sleeve min.	1.5 mm <sup>2</sup>
Conductor cross section flexible, with ferrule with plastic sleeve max.	35 mm <sup>2</sup>
Conductor cross section AWG min.	20
Conductor cross section AWG max.	2
2 conductors with same cross section, solid min.	0.5 mm <sup>2</sup>
2 conductors with same cross section, solid max.	6 mm <sup>2</sup>
2 conductors with same cross section, stranded min.	0.5 mm <sup>2</sup>
2 conductors with same cross section, stranded max.	6 mm <sup>2</sup>
2 conductors with same cross section, stranded, ferrules without plastic sleeve, min.	0.5 mm <sup>2</sup>
2 conductors with same cross section, stranded, ferrules without plastic sleeve, max.	4 mm <sup>2</sup>
2 conductors with same cross section, stranded, TWIN ferrules with plastic sleeve, min.	0.5 mm <sup>2</sup>

# Printed-circuit board connector - IPC 35 HC/ 5-STGF-15,00 - 1784884

## Technical data

### Connection data

2 conductors with same cross section, stranded, TWIN ferrules with plastic sleeve, max.	6 mm <sup>2</sup>
Minimum AWG according to UL/CUL	16
Maximum AWG according to UL/CUL	2

### Standards and Regulations

Connection in acc. with standard	EN-VDE
	UL
Flammability rating according to UL 94	V0

## Classifications

### eCl@ss

eCl@ss 4.0	272607xx
eCl@ss 4.1	27260701
eCl@ss 5.0	27260701
eCl@ss 5.1	27141190
eCl@ss 6.0	27260704
eCl@ss 7.0	27440402
eCl@ss 8.0	27440309

### ETIM

ETIM 4.0	EC002638
ETIM 5.0	EC002638

### UNSPSC

UNSPSC 6.01	30211810
UNSPSC 7.0901	39121409
UNSPSC 11	39121409
UNSPSC 12.01	39121409
UNSPSC 13.2	39121409

## Approvals

### Approvals

---

### Approvals

UL Recognized / VDE Gutachten mit Fertigungsüberwachung / CCA / IECEE CB Scheme / EAC

---

# Printed-circuit board connector - IPC 35 HC/ 5-STGF-15,00 - 1784884

## Approvals

Ex Approvals

Approvals submitted

### Approval details

UL Recognized			
		B	C
mm <sup>2</sup> /AWG/kcmil	16-12	16-2	16-2
Nominal current I <sub>N</sub>	20 A	115 A	115 A
Nominal voltage U <sub>N</sub>	600 V	600 V	600 V

VDE Gutachten mit Fertigungsüberwachung	
mm <sup>2</sup> /AWG/kcmil	0.5-35
Nominal current I <sub>N</sub>	125 A
Nominal voltage U <sub>N</sub>	1000 V

CCA

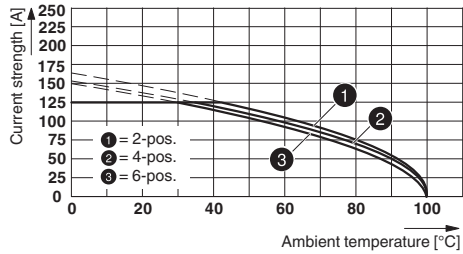
IECEE CB Scheme	
Nominal current I <sub>N</sub>	125 A
Nominal voltage U <sub>N</sub>	1000 V

EAC

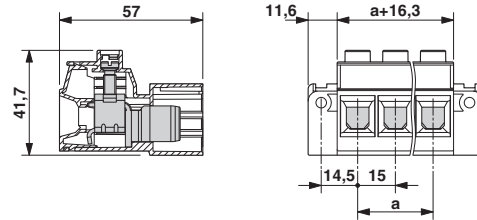
## Drawings

# Printed-circuit board connector - IPC 35 HC/ 5-STGF-15,00 - 1784884

Diagram



Dimensional drawing



PC 35 HC/...STF-15,0 with IPC 35 HC/...STGF-15,0  
Derating curve, representation based on DIN EN 60512-5-2:2003-01  
Connected conductor cross section = 35 mm<sup>2</sup>  
Reduction factor = 0.8  
Number of positions: see diagram