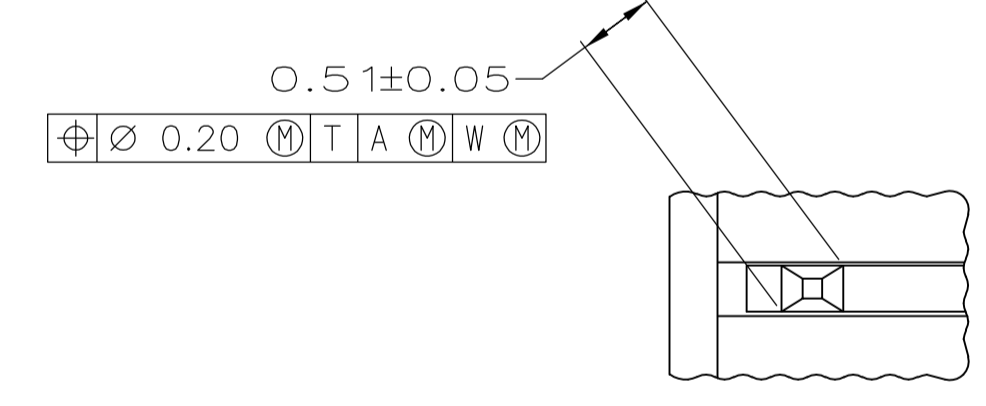
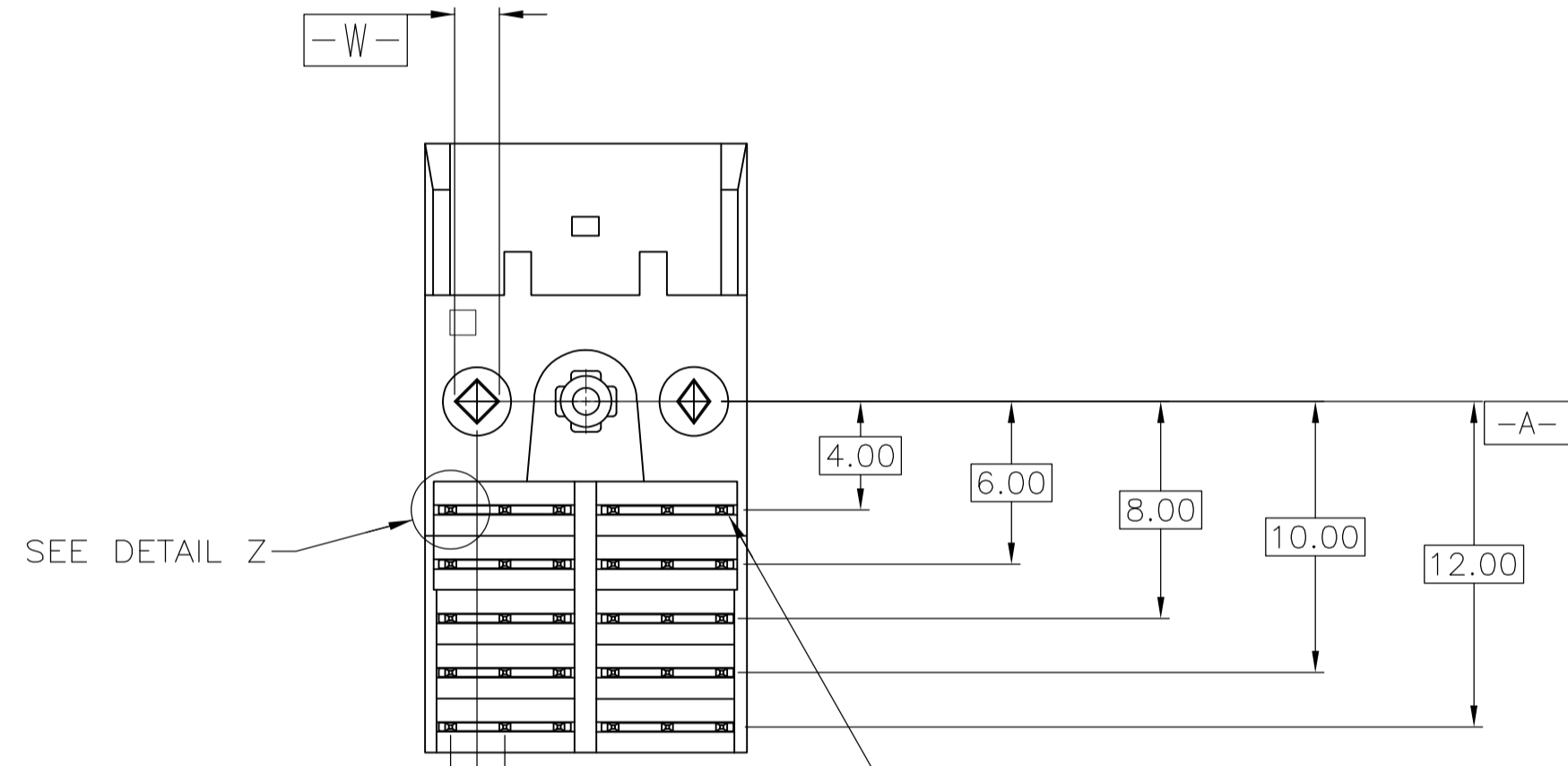


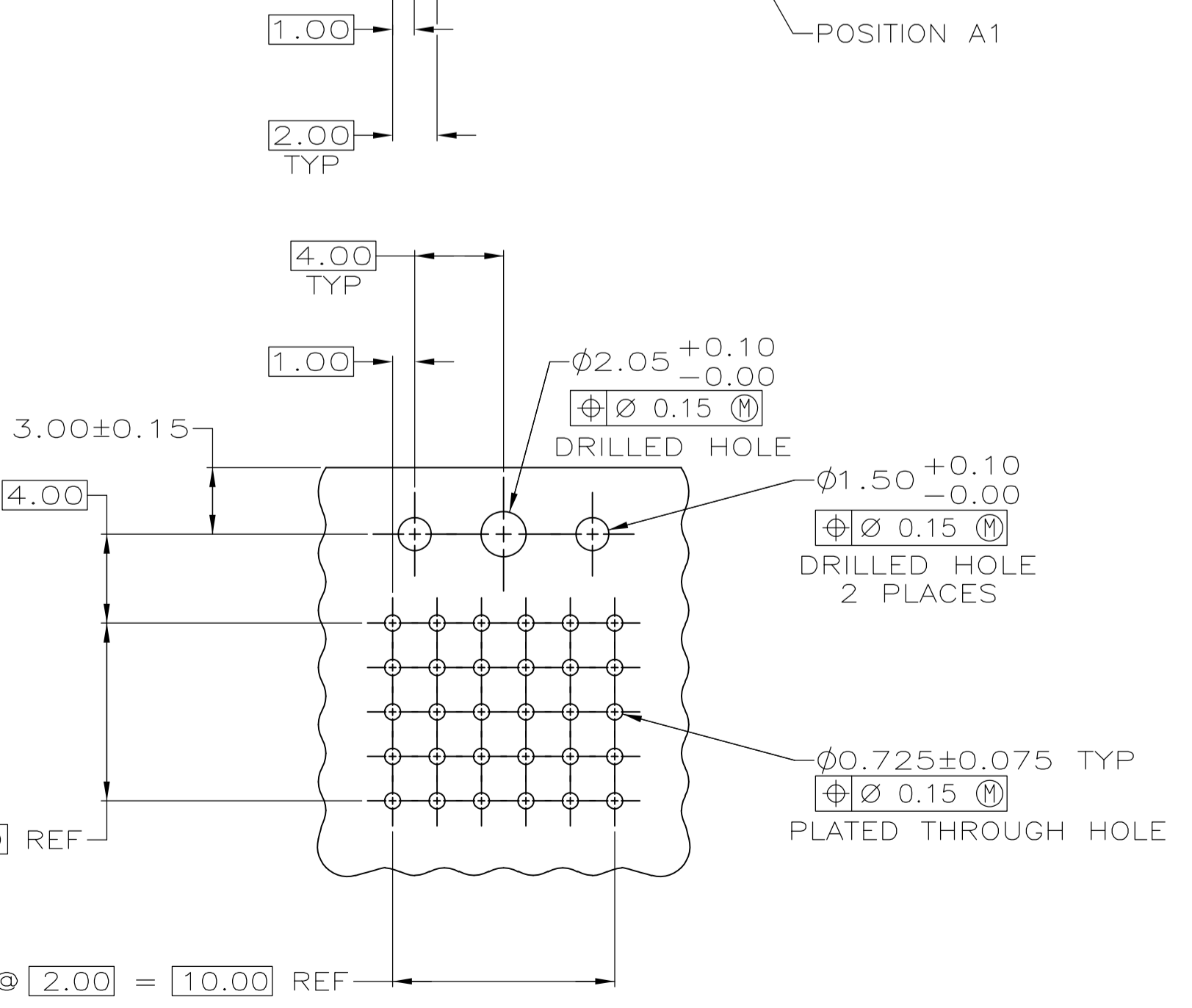
△ HOUSING MATERIAL: LIQUID CRYSTAL POLYMER.  
 COLOR: NATURAL.

△ CONTACT MATERIAL: PHOSPHOR BRONZE.

△ CONTACT FINISH:  
 UNDERPLATE (ENTIRE CONTACT):  
 0.00127 MIN NICKEL PER SAE-AMS-QQ-N-290  
 ON MATING SURFACES:  
 FLASH GOLD PER ASTM B 488, OVER  
 0.00076 MIN PALLADIUM-NICKEL OVER UNDERPLATE, OR  
 0.00076 MIN GOLD PER ASTM B 488 OVER UNDERPLATE.  
 ON LEADS:  
 0.00381 MIN MATTE TIN PER ASTM B 545 OVER UNDERPLATE.  
 LUBRICATION (MIN MATING SURFACES):  
 SURFACE CONDITIONER AFTER PLATING.



DETAIL Z  
 SCALE 20:1



4 SPACES @ 2.00 = 8.00 REF

5 SPACES @ 2.00 = 10.00 REF

RECOMMENDED CIRCUIT PATTERN  
 PER IPC-D300 TYPE II, CLASS 3  
 COMPONENT SIDE

5223093-1  
 PART NUMBER

|  |        |  |  |  |
|--|--------|--|--|--|
| THIS DRAWING IS A CONTROLLED DOCUMENT. |        | DIN T. SHUEY 11-18-98                          | Tyco Electronics Corporation<br>Harrisburg, PA 17105-3608                        |  |
| DIMENSIONS: mm                         |        | CHK C. SCHMID 11-19-98                         | NAME RCPT ASSEMBLY, POWER, Z-PACK 2mm FB, 10 POSITION, RIGHT ANGLE, SOLDER LEADS |  |
| TOLERANCES UNLESS OTHERWISE SPECIFIED: |        | APVO C. SCHMID 11-19-98                        | PRODUCT SPEC   |  |
| 0 PLC ± -                              |        | APPLICATION SPEC                               |  |  |
| 1 PLC ± -                              |        | SIZE CASE CODE DRAWING NO                      |  |  |
| 2 PLC ± 0.13                           |        | RESTRICTED TO                                  |  |  |
| 3 PLC ± 0.013                          |        | A1 00779 C=5223093                             |  |  |
| 4 PLC ± -                              |        | CUSTOMER DRAWING SCALE 4:1 SHEET 1 OF 1 REV A1 |  |  |
| ANGLES ± -                             |        |  |  |  |
| MATERIAL                               | FINISH |  |  |  |