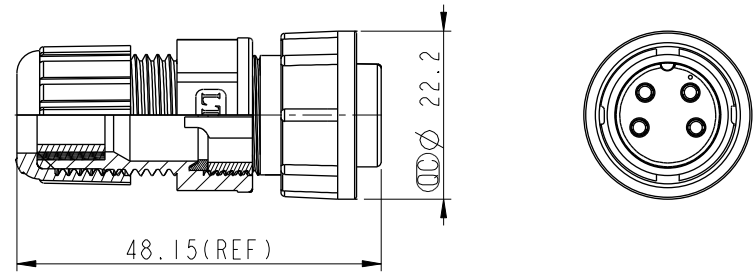
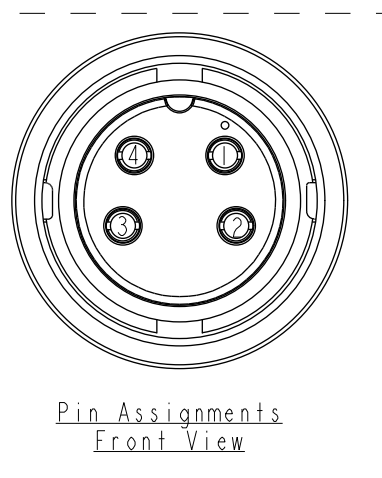
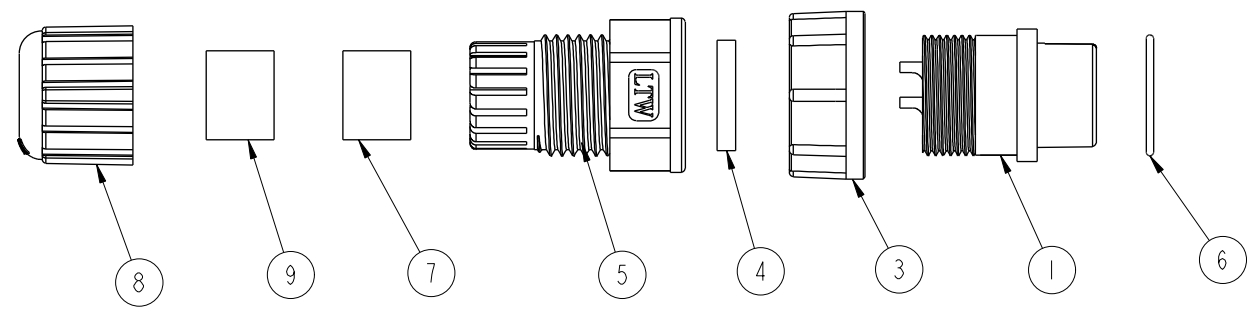


THIS DOCUMENT IS SUBJECT TO CHANGE WITHOUT NOTICE. IT IS CONFIDENTIAL AND A PROPERTY OF AMPHENOL LTW. DISCLOSURE TO THIRD PARTY HAS TO BE AUTHORIZED BY AMPHENOL LTW.

REV.	ECN NO.	DATE	SIGN	DESCRIPTION



- Note:
- \* (CC) Important Dimension To Check.
  - \* Waterproof Rate: IP67
  - \* Housing: Nylon+GF, Black
  - \* Female Pin: Copper Alloy, Gold Plated
  - \* O-Ring: EPDM, Black
  - \* Lock Nut: Nylon+GF, Black
  - \* Gasket: EPDM, Black
  - \* Clamp Ring: Nylon, Black
  - \* Sealing Nut: Nylon, Black
  - \* Seals B1 for Cable OD:  $\varnothing 7.6\text{mm} \sim \varnothing 9.6\text{mm}$
  - \* Seals B2 for Cable OD:  $\varnothing 4.0\text{mm} \sim \varnothing 7.6\text{mm}$
  - \* One Set Unassembled in One PE Bag

A L T W  
DCC. DEPT.  
CONFIDENTIAL  
2012-04-24  
**ISSUED**

A L T W  
CONFIDENTIAL  
2011-12-29  
R&D DEPT.

UNIT:mm   TOLERANCE .X ±0.25 .XX ±0.1 .XXX ±0.05 ANGLES ±1°	TITLE Middle, Assy Lock 4Pin F Conn F Pin			<h1 style="text-align: center;">Amphenol LTW</h1> <p style="text-align: center;">安費諾亮泰企業股份有限公司</p>		ITEM NO. CB-04BFFA-LL7001	DRAWN BY SamChang	DATE 2012-04-02
	SCALE 1:1	SIZE A4	SHEET 1 OF 1			DWG NO. CB-04BFFA-LL7001	CHECKED BY Jeffrey	DATE 2012-04-24
	REV. A	WC-REV. A.2	(CC): Inspection item			CUSTOMER ALTW	APPROVED BY Lion	DATE 2012-04-24