

# 4G LTE Cellular Band Blade Antenna



AEACCA115021-S698



115.6 x 21.7 x 5.8 mm  
RoHS/RoHS II Compliant

MSL = N/A: NOT APPLICABLE

## FEATURES

- LTE700, GSM850, GSM900, DCS, PCS, UMTS1, LTE2600
- Gain of 2dBi
- VSWR  $\leq$  2.0
- Low profile 5.8mm
- Fakra connector
- Adhesive mount

## APPLICATIONS

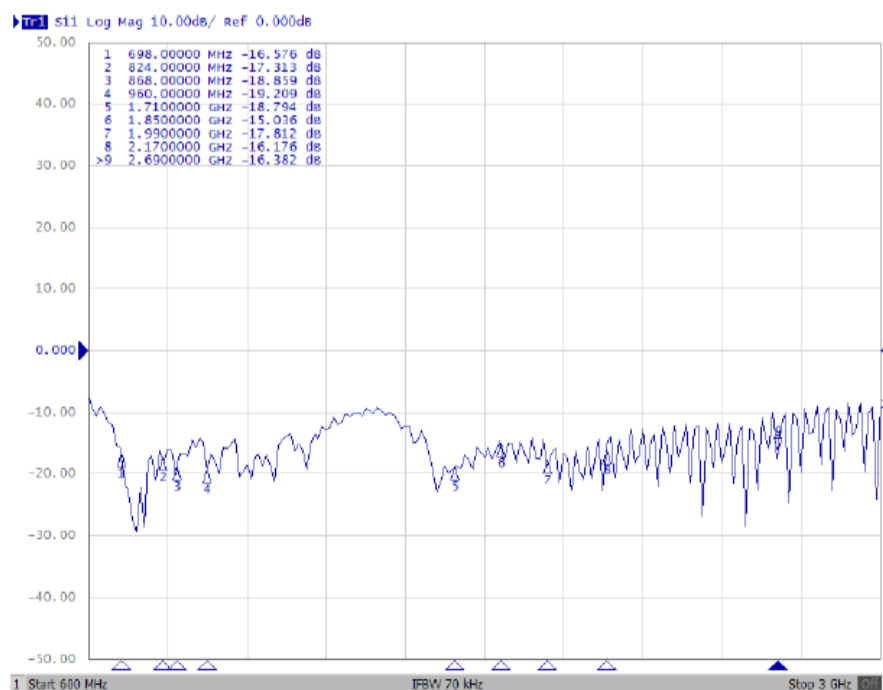
- IoT applications
- M2M
- 4G/LTE applications
- GSM
- DCS
- PCS
- UMTS
- Remote technology/ monitoring
- POS terminals

## EXTERNAL ANTENNA

Parameters	Min.	Typ.	Max.	Units	Note
Frequency Range		698~960/1710~2655		MHz	
VSWR			2.0		
Polarization Model	Linear				
Impedance		50		$\Omega$	
Gain		2		dBi	(Zenith)
Operating Temperature	-40		+85	$^{\circ}\text{C}$	
Input Power			10	W	

## RETURN - LOSS CHARACTERISTICS

### S11 Return-Loss



# 4G LTE Cellular Band Blade Antenna



AEACCA115021-S698

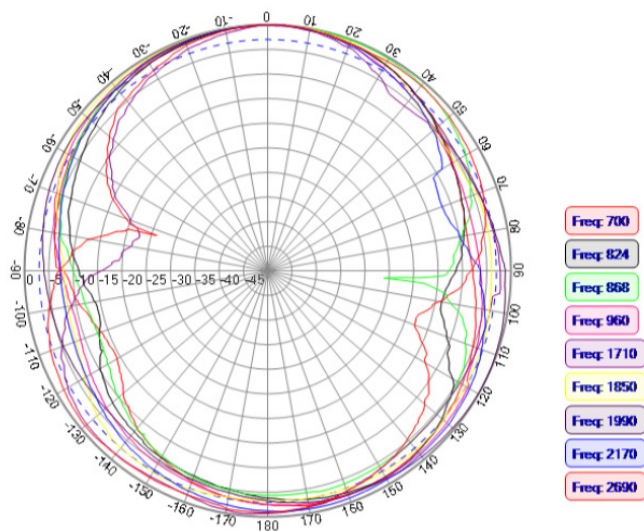


115.6 x 21.7 x 5.8 mm  
RoHS/RoHS II Compliant

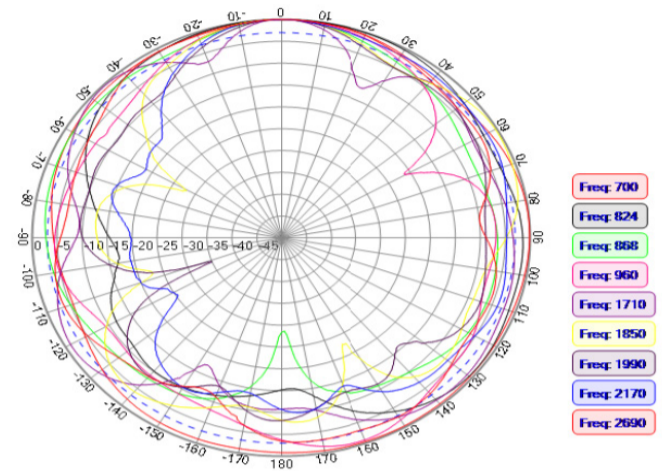
MSL = N/A: NOT APPLICABLE

## RADIATION PATTERNS

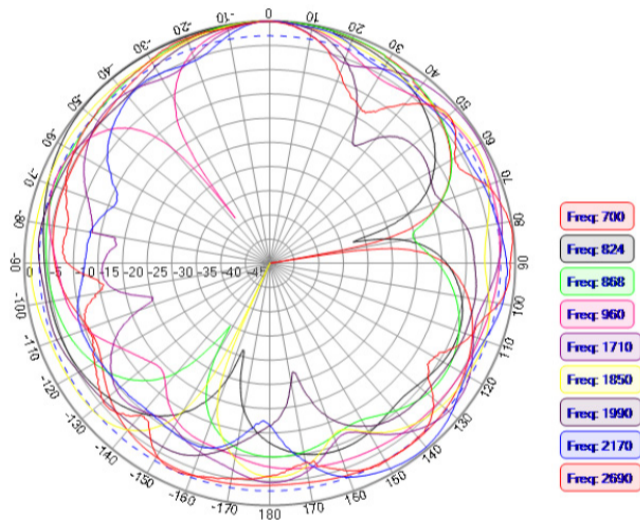
### XY Plane



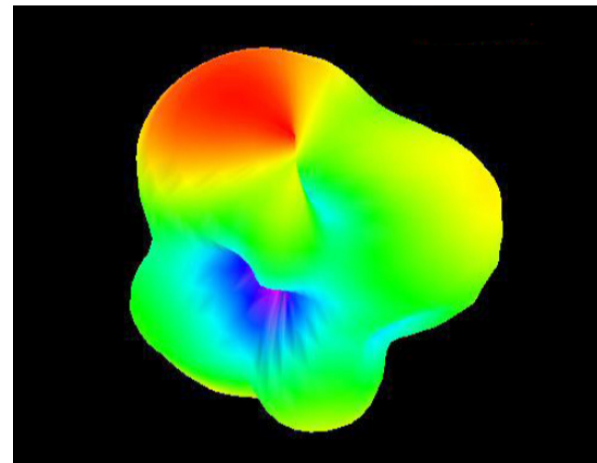
### XZ Plane



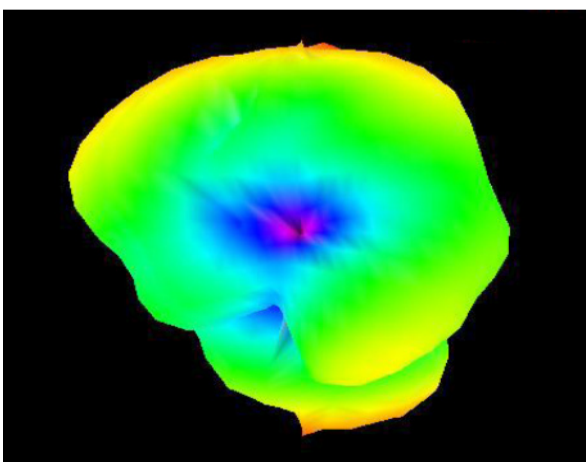
### YZ Plane



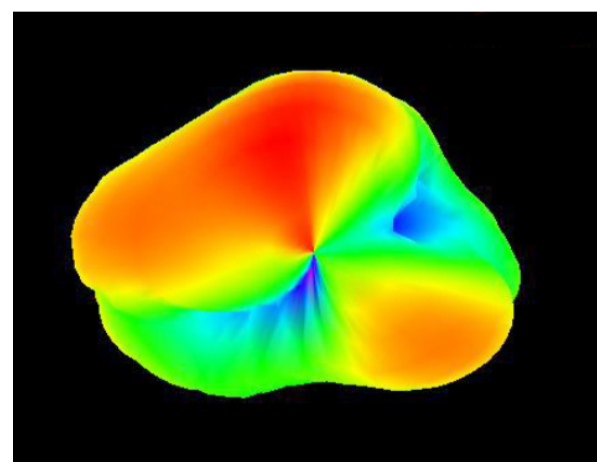
### 700 MHz



### 824 MHz



### 868 MHz



# 4G LTE Cellular Band Blade Antenna



AEACCA115021-S698

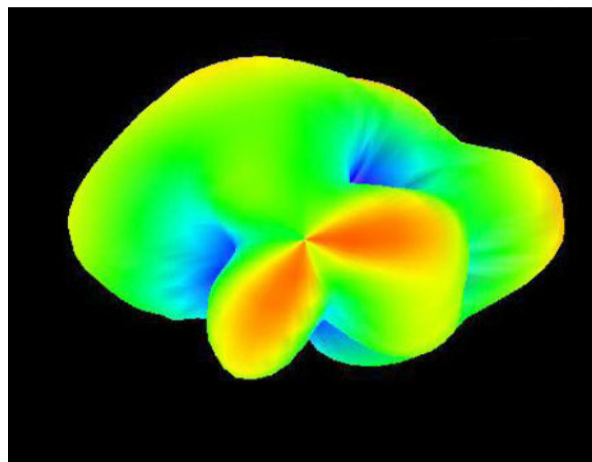


115.6 x 21.7 x 5.8 mm  
RoHS/RoHS II Compliant

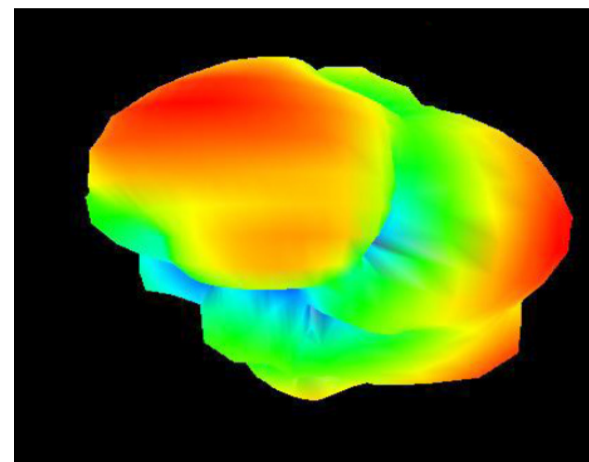
MSL = N/A: NOT APPLICABLE

## 3D PATTERNS

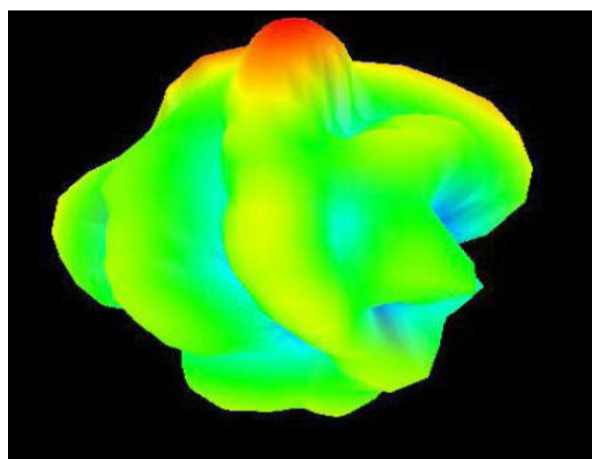
960 MHz



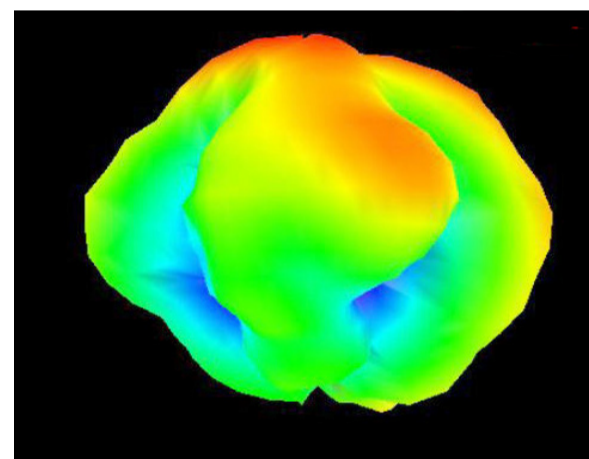
1710 MHz



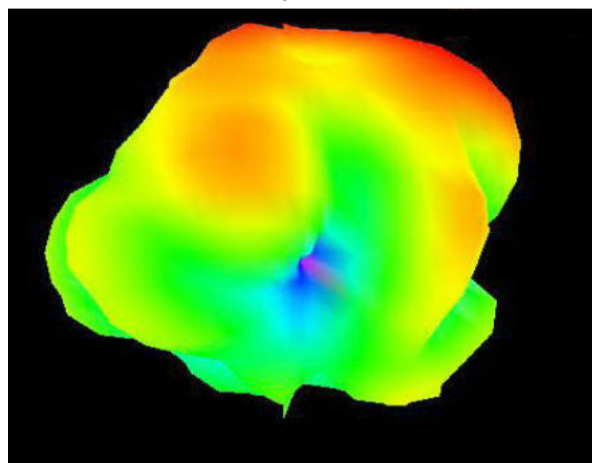
1850 MHz



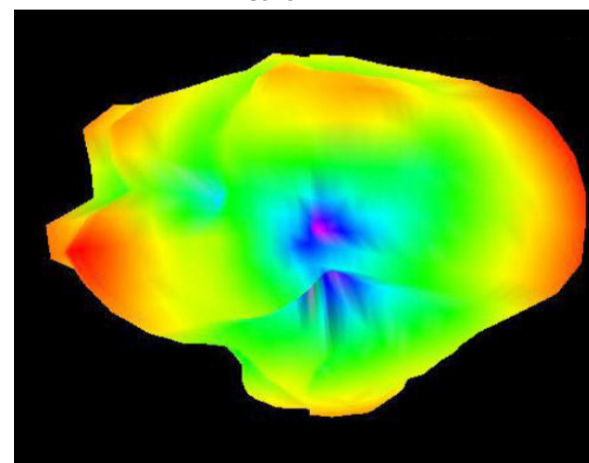
1990 MHz



2170 MHz



2690 MHz



Frequency (MHz)	700	824	868	960	1710	1850	1990	2170	2690
Peak Gain (dBi)	2.12	0.83	2.60	1.00	1.61	0.78	0.34	-0.89	-3.00
Efficiency (%)	59	53	56	71	57	58	57	56	55



5101 Hidden Creek Ln Spicewood TX 78669  
Phone: 512-371-6159 | Fax: 512-351-8858  
For terms and conditions of sales, please visit:  
[www.abracon.com](http://www.abracon.com)

REVISED: 03.19.2018

ABRACON IS  
ISO9001-2008  
CERTIFIED

# 4G LTE Cellular Band Blade Antenna



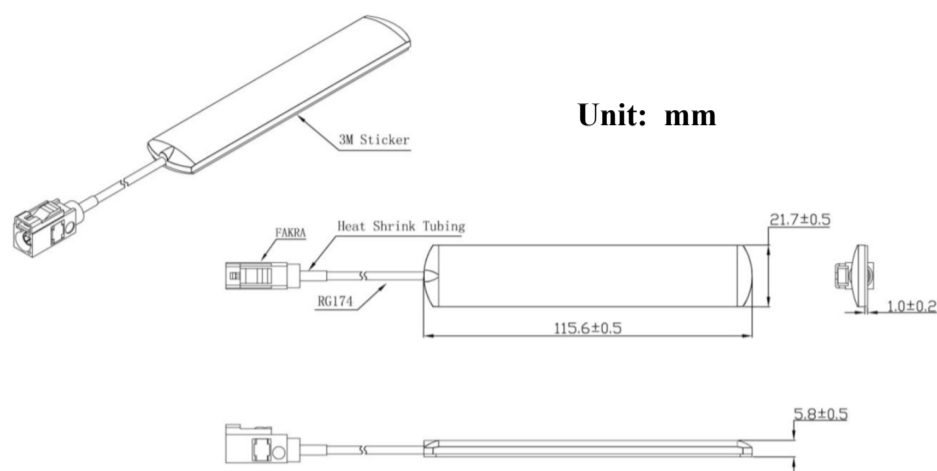
AEACCA115021-S698



115.6 x 21.7 x 5.8 mm  
RoHS/RoHS II Compliant

MSL = N/A: NOT APPLICABLE

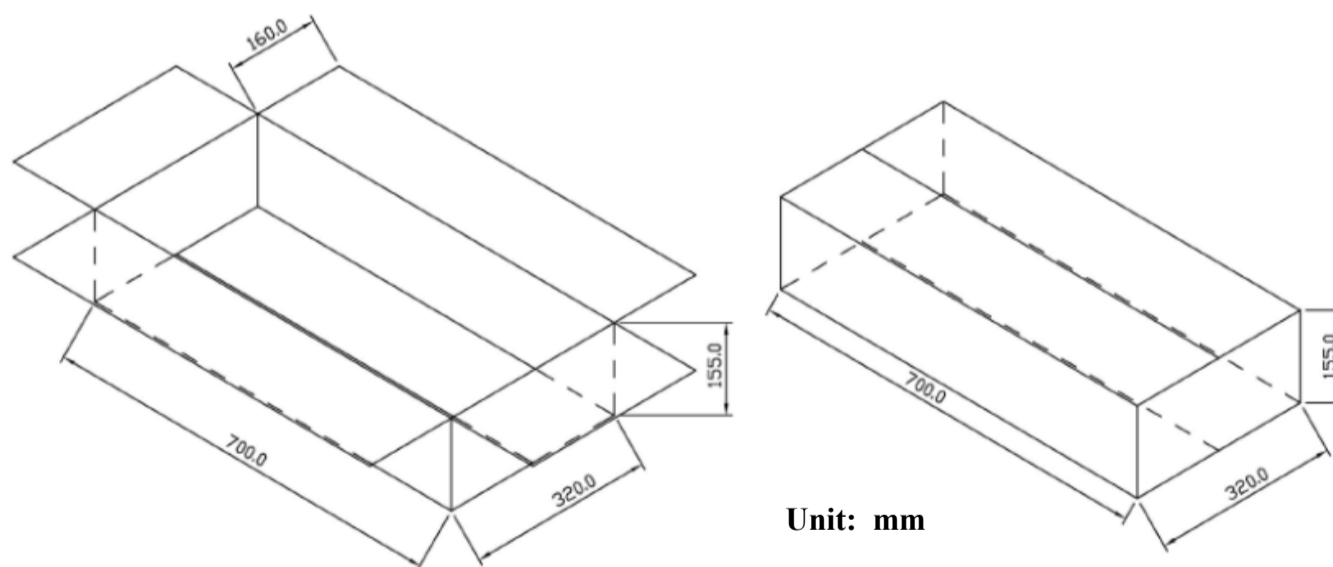
## DIMENSIONS



Parameters	Description
Cable Length	3.00 m
RF Cable	RG174
RF Connector	FAKRA/SMA or other
Radome Material	ABS
Mounting Type	Adhesive

## PACKAGING

Each 700 x 320 x 155 mm size carton includes 250 pcs antenna, 13kgs/carton.



Unit: mm



5101 Hidden Creek Ln Spicewood TX 78669  
Phone: 512-371-6159 | Fax: 512-351-8858  
For terms and conditions of sales, please visit:  
[www.abracon.com](http://www.abracon.com)

REVISED: 03.19.2018

ABRACON IS  
ISO9001-2008  
CERTIFIED