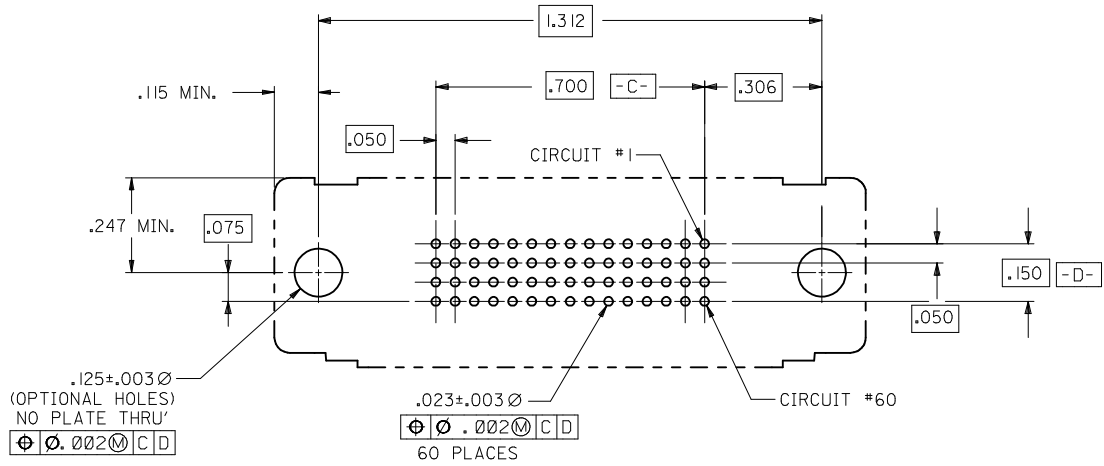


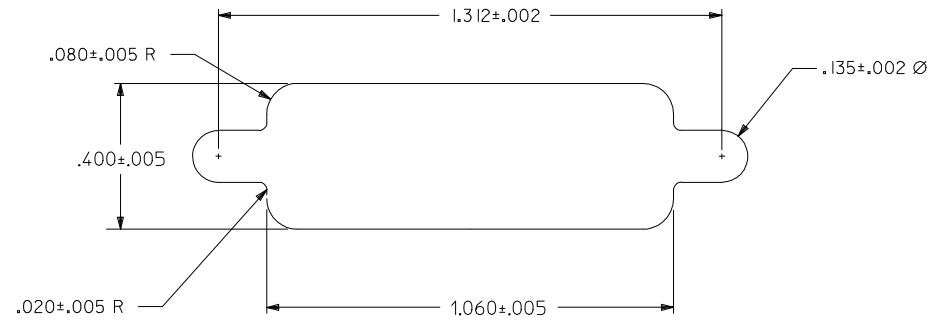
- NOTES:
- MATERIALS:
    - HOUSING: GLASS FILLED LCP (LIQUID CRYSTAL POLYMER), UL 94V-0, COLOR: BLACK.
    - MOLDED STICK: GLASS FILLED LCP (LIQUID CRYSTAL POLYMER), UL 94V-0, COLOR: BLACK.
    - FEMALE TERMINAL: HIGH PERFORMANCE COPPER ALLOY
    - OUTER SHELL: DEEP DRAWN STEEL.
  - PLATING :
    - TERMINAL: 30 microinches / 0.76 micrometer MIN. GOLD IN SELECTIVE AREA, 100 microinches / 2.54 micrometer MIN. TIN IN SELECTIVE AREA, OVER NICKEL UNDERPLATE OVERALL.
    - OUTER SHELL: 100 microinches / 2.54 MIN. BRIGHT NICKEL OVER COPPER FLASH (OPTIONAL)
  - CONFORMS TO PRODUCT SPECIFICATION PS-70928.
  - PARTS PACKAGED PK-70873-0291.
  - THREAD GAUGE MAY REQUIRE UP TO 1 IN.-LB. OF TORQUE DURING GAUGING PROCESS.
  - PART COMPLIES WITH CLASS B OF COSMETIC SPECIFICATION PS-45499-002

**SECTION X-X**

<b>MOD PANEL CUT-OUT</b> EC NO: UCP2012-0335 DRAWN: DMORGAN 2011/08/11 CHKD: MPOFF 2014/04/11 APPR: SMILLER 2014/05/12	QUALITY SYMBOLS ▽=0 ▽=0 ▽=0	GENERAL TOLERANCES (UNLESS SPECIFIED)		DIMENSION STYLE <b>INCH ONLY</b>		SCALE 4:1	DESIGN UNITS INCH	THIRD ANGLE PROJECTION			
		4 PLACES ± --- ± ---	3 PLACES ± --- ± .010	2 PLACES ± --- ± ---	1 PLACE ± --- ± ---	0 PLACE ± --- ± ---	DRAWN BY MOS		DATE 1993/12/07		
		CHECKED BY MOS		DATE 1993/12/07		APPROVED BY CAB		DATE 1993/12/07		.050 PITCH CKT LFH VERTICAL I/O - M3 SHIELD RECEPTACLE <b>molex</b>	
		MATERIAL NO. <b>70928-0002</b>		DOCUMENT NO. <b>SDA-70928-0002</b>		SHEET NO. 1 OF 2					
DRAFT WHERE APPLICABLE MUST REMAIN WITHIN DIMENSIONS		ANGULAR ±1/2°		SIZE C		THIS DRAWING CONTAINS INFORMATION THAT IS PROPRIETARY TO MOLEX INCORPORATED AND SHOULD NOT BE USED WITHOUT WRITTEN PERMISSION					

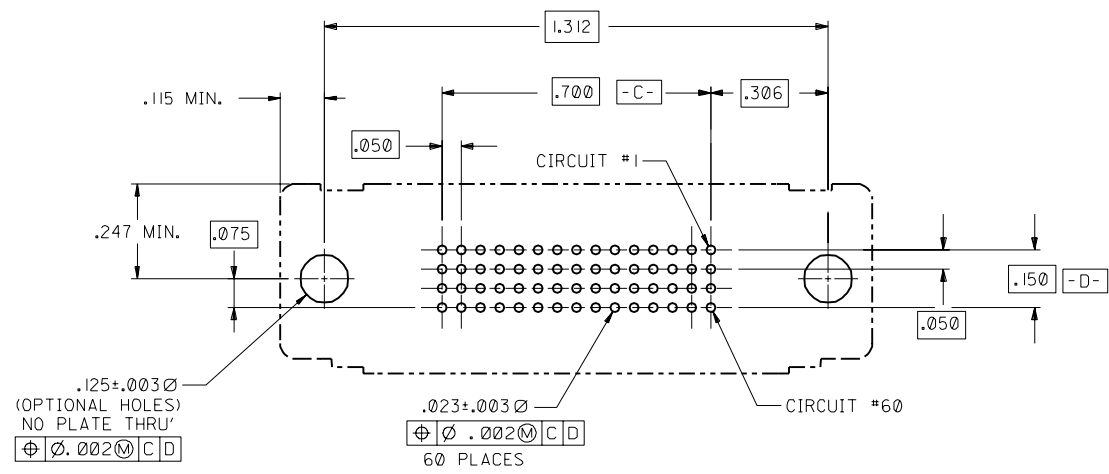


RECOMMENDED P.C.B. LAYOUT  
COMPONENT SIDE

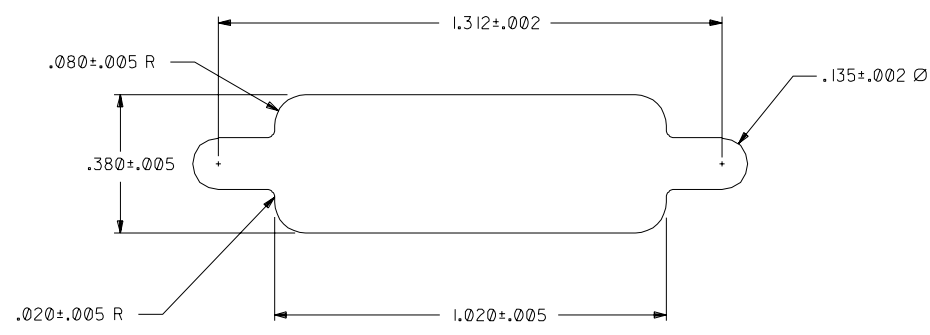


RECOMMENDED PANEL CUT-OUT

SEE SHEET 1	EC NO: UCP2012-0335	DRW:DMORGAN 2011/08/11	CHK:DMPOFF 2014/04/11	APPR:SMILLER 2014/05/12	DESCRIPTION	QUALITY SYMBOLS	GENERAL TOLERANCES (UNLESS SPECIFIED)		DIMENSION STYLE		SCALE	DESIGN UNITS	THIRD ANGLE PROJECTION
							mm	INCH	INCH ONLY		4:1	INCH	
G	REV	REV	REV	REV	REV	REV	4 PLACES	± .010	DRAWN BY	DATE	TITLE		
							3 PLACES	± .010	MOS	1993/12/07			
							2 PLACES	± .010	CHECKED BY	DATE	.050 PITCH CKT LFH VERTICAL I/O - M3 SHIELD RECEPTACLE		
							1 PLACE	± .010	MOS	1993/12/07			
							0 PLACE	± .010	APPROVED BY	DATE	molex		
								CAB	1993/12/07				
							ANGULAR ±1/2°		MATERIAL NO.		DOCUMENT NO.		
							DRAFT WHERE APPLICABLE MUST REMAIN WITHIN DIMENSIONS		70928-0002		SDA-70928-0002		
									SIZE	THIS DRAWING CONTAINS INFORMATION THAT IS PROPRIETARY TO MOLEX INCORPORATED AND SHOULD NOT BE USED WITHOUT WRITTEN PERMISSION			
									C			SHEET NO. 2 OF 2	



RECOMMENDED P.C.B. LAYOUT  
COMPONENT SIDE



RECOMMENDED PANEL CUT-OUT

C	SEE SHEET I
B	SEE SHEET I
A	SEE SHEET I

DIMENSIONS SHOWN (METRIC) INCH		▽ = 0		▼ = 0		REVISE ONLY ON CAD SYSTEM	
UNLESS OTHERWISE SPECIFIED TOLERANCES ANGULAR ± 1/2°							
3 PLACE ± .010		INCH		METRIC		---	
2 PLACE ±		±		±		---	
1 PLACE ---		±		±		---	
DRAFT WHERE APPLICABLE MUST REMAIN WITHIN DIMENSIONS							
DRWG. BY: MOS	CHK'D. BY: MOS	FILE NAME: S7032811A	SCALE: 4: 1	THIS DRAWING CONTAINS INFORMATION THAT IS PROPRIETARY TO MOLEX INC. AND SHOULD NOT BE USED WITHOUT WRITTEN PERMISSION.	FILE NO. 70928-0002	SHEET NO. 2	DATE 4/14/94
APP'D. BY: GWF	SCALE: 4: 1	MFG. SH. 60532		REV. LTR. REVISIONS		SDA-70928-0002	
				PART NO. 70928-0002		DRWG. NO. SDA-70928-0002	
				MFG. SH. 60532		U.S.A.	

70928

C

D

B

A