

NOTES:

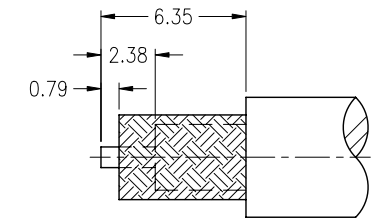
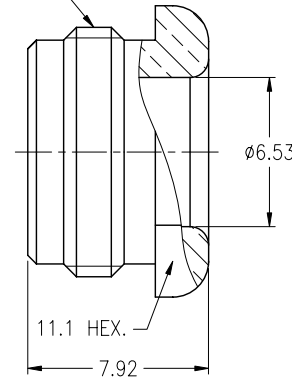
1. MATERIALS AND FINISHES:
 BODY - BRASS, NICKEL PLATING
 CONTACT - BRASS, SILVER PLATING
 INSULATOR - PTFE, NATURAL
2. ELECTRICAL:
 A. IMPEDANCE: 50 OHM
 B. FREQUENCY RANGE: DC 0-4 GHz
 C. DIELECTRIC WITHSTANDING VOLTAGE: 1500 VRMS, MIN.
3. MECHANICAL:
 A. DURABILITY: 500 CYCLES MIN.
 B. TEMPERATURE RANGE: -65°C to +165°C
4. WHEN SOLDERING CONTACT TO CABLE, LEAD FREE.

THIRD ANGLE PROJ.

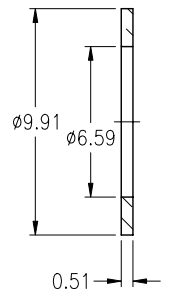
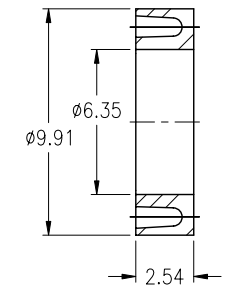
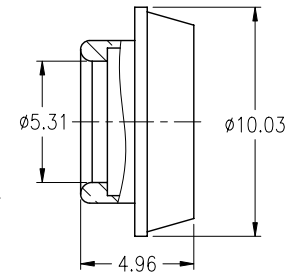
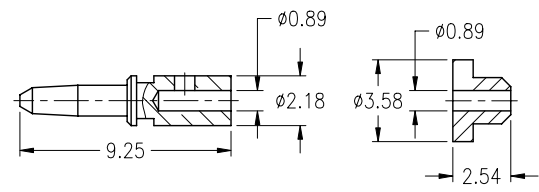
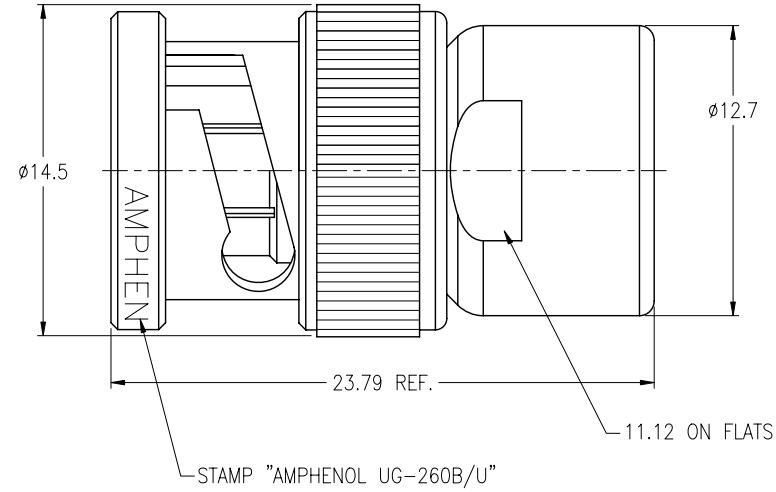
REVISIONS

REV	DESCRIPTION	DATE	ECO	APPR
A2	SEE SHEET 1	30-Oct-02	--	RICHER
B	SEE SHEET 1	06-Mar-08	--	SUSAN
AG	REDRAWN TO UPDATE FORMAT	24-Dec-08	47242	SH
AH	SEE SHEET 1	18-Dec-08	47888	SH
AJ	STAMP "AMPHENOL" WAS "74868"\RD-DM11120601R3		48843	

7/16-28UNEF-2A



RECOMMENDED CABLE STRIPPING DIM'S



CUSTOMER OUTLINE DRAWING
 ALL OTHER SHEETS ARE FOR INTERNAL USE ONLY

UNLESS OTHERWISE SPECIFIED, DIMENSIONS ARE IN METRIC AND TOLERANCES ARE: <0.5mm ±0.05mm 0.5 - 6mm ±0.1mm 6 - 30mm ±0.2mm 30 - 120mm ±0.3mm ANGLES ±1°	MATERIAL	DRAWN R. MAO	DATE 08-Feb-12	TITLE BNC PLUG UG-260B/U (FOR RG-59/U, 62C/U, 140B/U, 120/U)			Amphenol RF Danbury CT USA, Tainan Taiwan, Shenzhen China www.amphenolrf.com	
	REFERENCE	ENGINEER C. WANG	DATE 15-Dec-09	SCALE: 3/1	SHEET 2 OF 2		DRAWING NO.	31-212
	FINISH	APPROVED D. HU	DATE 08-Feb-12	DWG SIZE B	CODE ID 74868	REV AJ	ITEM NO.	31-212
	NOTICE - These drawings, specifications, or other data (1) are, and remain the property of Amphenol Corp. (2) must be returned upon request; and (3) are confidential and not to be disclosed to any person other than those to whom they are given by Amphenol Corp. The furnishing of these drawings, specifications, or other data by Amphenol Corp., or to any other person to anyone for any purpose is not to be regarded by implication or otherwise in any manner licensing, granting rights or permitting such holder or any other person to manufacture, use or sell any product, process or design, patented or otherwise, that may in any way be related to or disclosed by said drawings, specifications, or other data.		F:\DWG\CNPD\31\212-AJSZ				PART NO.	31-212