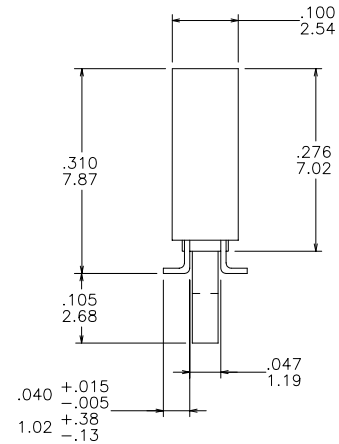
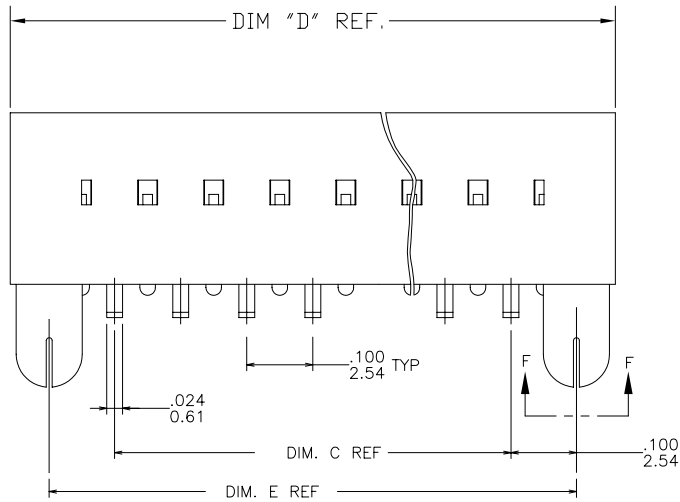
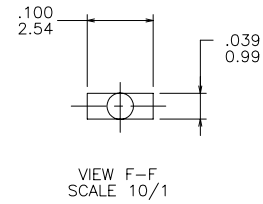
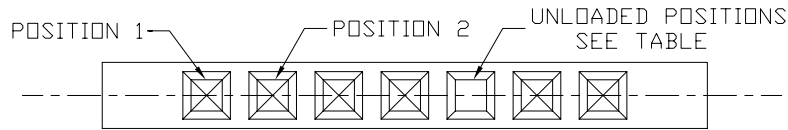


PRODUCT NUMBER
SEE SHEET 3



FCI
FCIconnect.com

Copyright FCI

mat'l. code SEE NOTES 1 & 3		surface ISO 1302 ✓		tolerance ISO 406 ISO 1101		projection ISO 1101		product family DUBOX	
ltr ecn no dr date		tolerances unless otherwise specified				INCH/MM		title SMT SINGLE ROW POL. LATCHED VCC ASSEMBLY	
A	V03-0371	HTB	04/01/03	angles	.XX±.01/.3	scale 1:1		dwg no sheet 1 of 3 size	
B	V03-0407	LP	4/10/03	linear	.XXX±.005/.13	FCI		10026805 A3	
C	V05-0463	SV	06/15/05	0°±2'	.XXXX±.0020/.051			type Product Customer Drawing	
D	M07-0114	AGS	02/15/07	dr	T. BREWBAKER 04/01/03				
E	M07-0198	MHT	4/23/07	enr	H. SUNDY 04/01/03				
				chr	H. SUNDY 04/01/03				
				appd	H. SUNDY 04/01/03				
sheet index	revision sheet	E 1	E 2	E 3					

form: A3

PRODUCT NUMBER
SEE SHEET 3

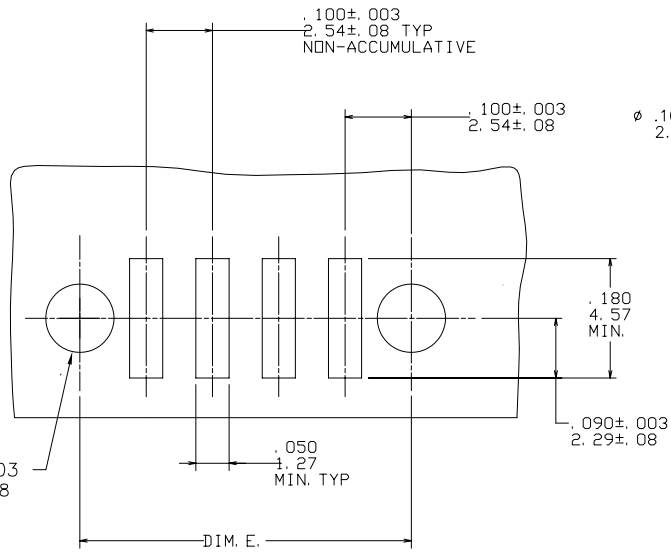


FIGURE A
TOP ENTRY
.025/.64 SQ PIN

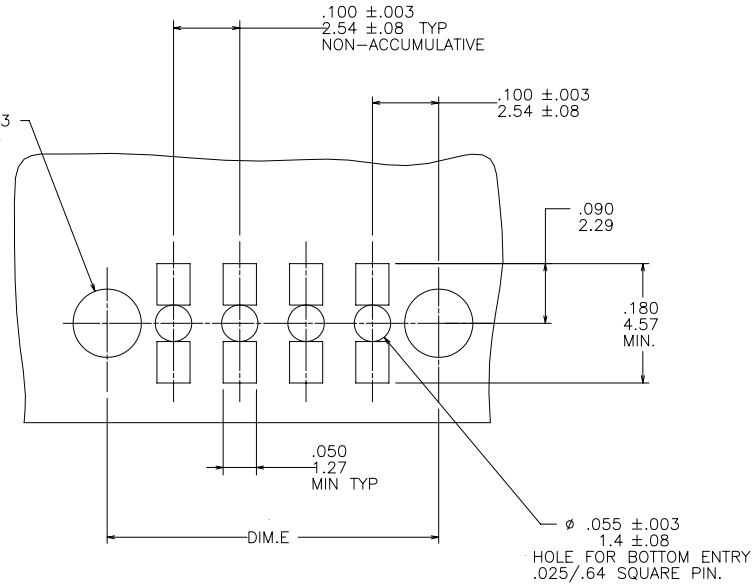


FIGURE B
BOTTOM ENTRY (THROUGH PWB)
.025/.64 SQ PIN



FCIconnect.com

Copyright FCI

mat'l. code SEE NOTES 1 & 3		surface ISO 1302 ✓	tolerance ISO 406 ISO 1101	projection INCH/MM	product family DUBOX
ltr	ecn	no	dr	date	tolerances unless otherwise specified
E					linear .XX±.01/.3 .XXX±.005/.13 .xxxx±.0020/.051
					angles 0°±2°
					dr T. BREWBAKER 04/01/03
					enrg H. SUNDY 04/01/03
					chr H. SUNDY 04/01/03
					appd H. SUNDY 04/01/03
sheet	revision				
index	sheet				
					scale 1:1
					title SMT SINGLE ROW POL. LATCHED VCC ASSEMBLY
					dwg no 10026805 sheet 2 of 3 size A3
					type Product Customer Drawing

form: A3

PRODUCT NUMBER	NO. OF POS.	DIM C	DIM D	DIM E	UNLOADED POSITIONS
10026805-001	1 X 6	.500/12.70	.817/20.75	.700/17.78	5
10026805-001LF	1 X 6	.500/12.70	.817/20.75	.700/17.78	5

NOTE 8

NOTES:

- ① TERMINAL MATERIAL: PHOSPHOR BRONZE.
2. RECOMMENDED APPLICATION DATA:
 - A. RECOMMENDED SOLDER PAD PATTERN IS SHOWN IN FIG. A & B.
 - B. ALL MATING PINS TO BE .025/.64 SQUARE ON TRUE CENTER OF GIVEN TERMINAL SPACING WITHIN .015/0.38 DIA.
 - C. SUGGESTED MATING PIN LENGTH $.210 \pm .020/5.33 \pm 0.51$.
- ③ HOUSING MATERIAL: FILLED P.P.S.
FLAME RETARDANT PER UL-94V-0.
THIS PART WILL WITHSTAND EXPOSURES TO 260°C
PEAK TEMPERATURE FOR 20 SECONDS IN WAVE SOLDER,
INFRA-RED OR VAPOR PHASE SOLDER PROCESS.
COLOR: BLACK.
- ④ PRESTAMPED POST PLATED TERMINALS.
- ⑤ MARK "FCI", FCI FINAL PART NO. AND DATE CODE ON TUBE LABEL.
6. STANDARD PACKAGING PER BUS-14-097.
7. PLATING: CONTACT AREA $30\mu/1.27\mu\text{m}$ GOLD OVER $50\mu/.76\mu\text{m}$ NICKEL OR GXT (SEE NOTE 10)
SOLDERTAIL IS $200\mu/5.08\mu\text{m}$ PURE TIN.
- ⑧ ADD LF SUFFIX AT THE END OF PART NUMBER FOR LEAD FREE OPTION.
9. THESE PRODUCTS MEETS EUROPEAN UNION DIRECTIVES AND OTHER COUNTRY REGULATION AS DESCRIBED IN GS-22-008.
- ⑩ PLATING OPTIONS:
MAY BE EITHER GOLD OR GXT PLATED AT MANUFACTURER'S OPTION.



Copyright FCI

mat'l. code SEE NOTES 1 & 3		surface ISO 1302 ✓	tolerance ISO 406 ISO 1101	projection 	product family DUBOX
ltr	ecn	no	dr	date	tolerances unless otherwise specified
E					angles linear
					$.XX \pm .01/.3$ $.xxx \pm .005/.13$ $.xxxx \pm .0020/.051$
					0'±2'
					dr T. BREWBAKER 04/01/03
					enr H. SUNDY 04/01/03
					chr H. SUNDY 04/01/03
					appd H. SUNDY 04/01/03
sheet index	revision sheet				



title
SMT SINGLE ROW POL.
LATCHED VCC ASSEMBLY

dwg no 10026805 sheet 3 of 3 size A3

type Product Customer Drawing