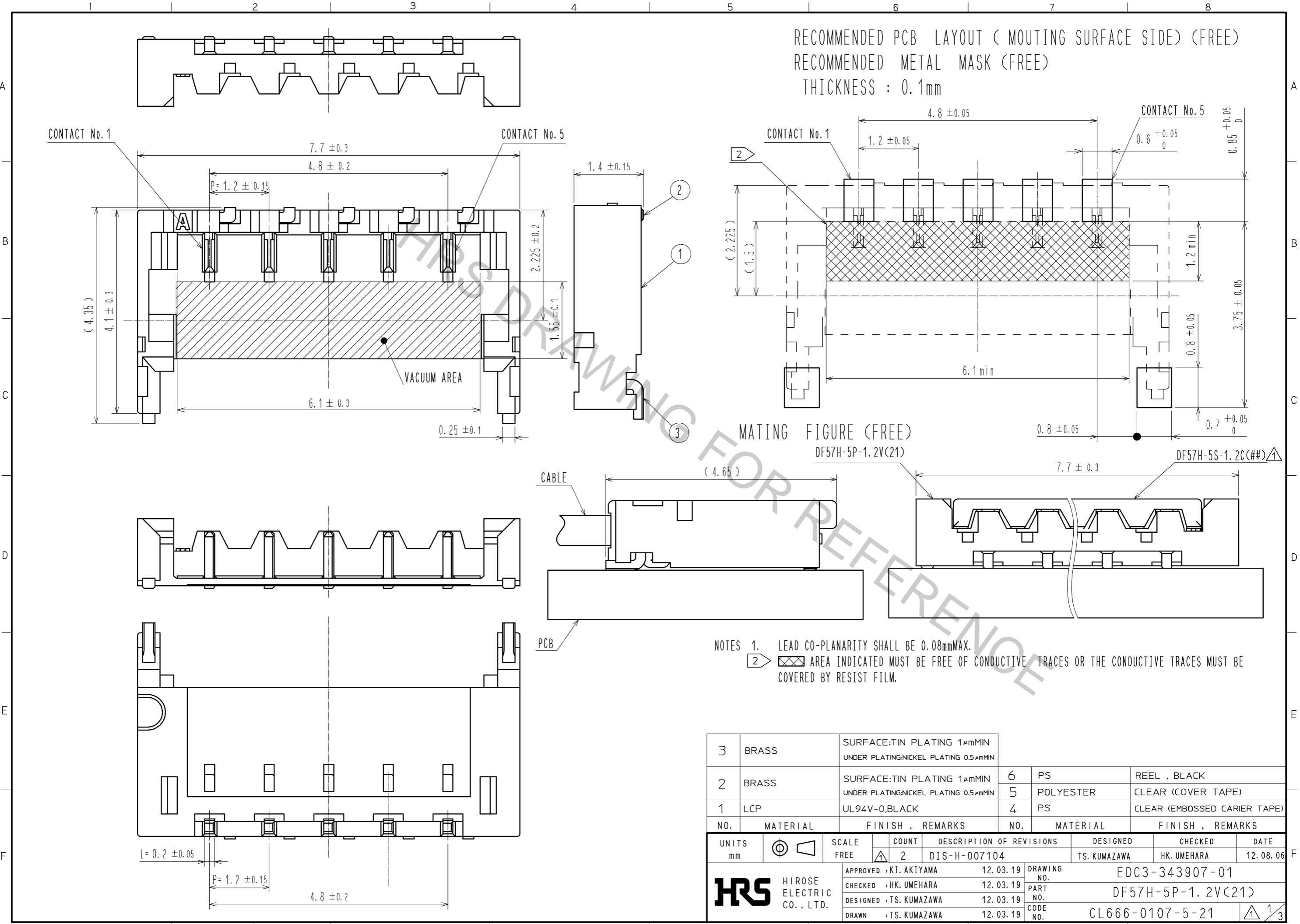
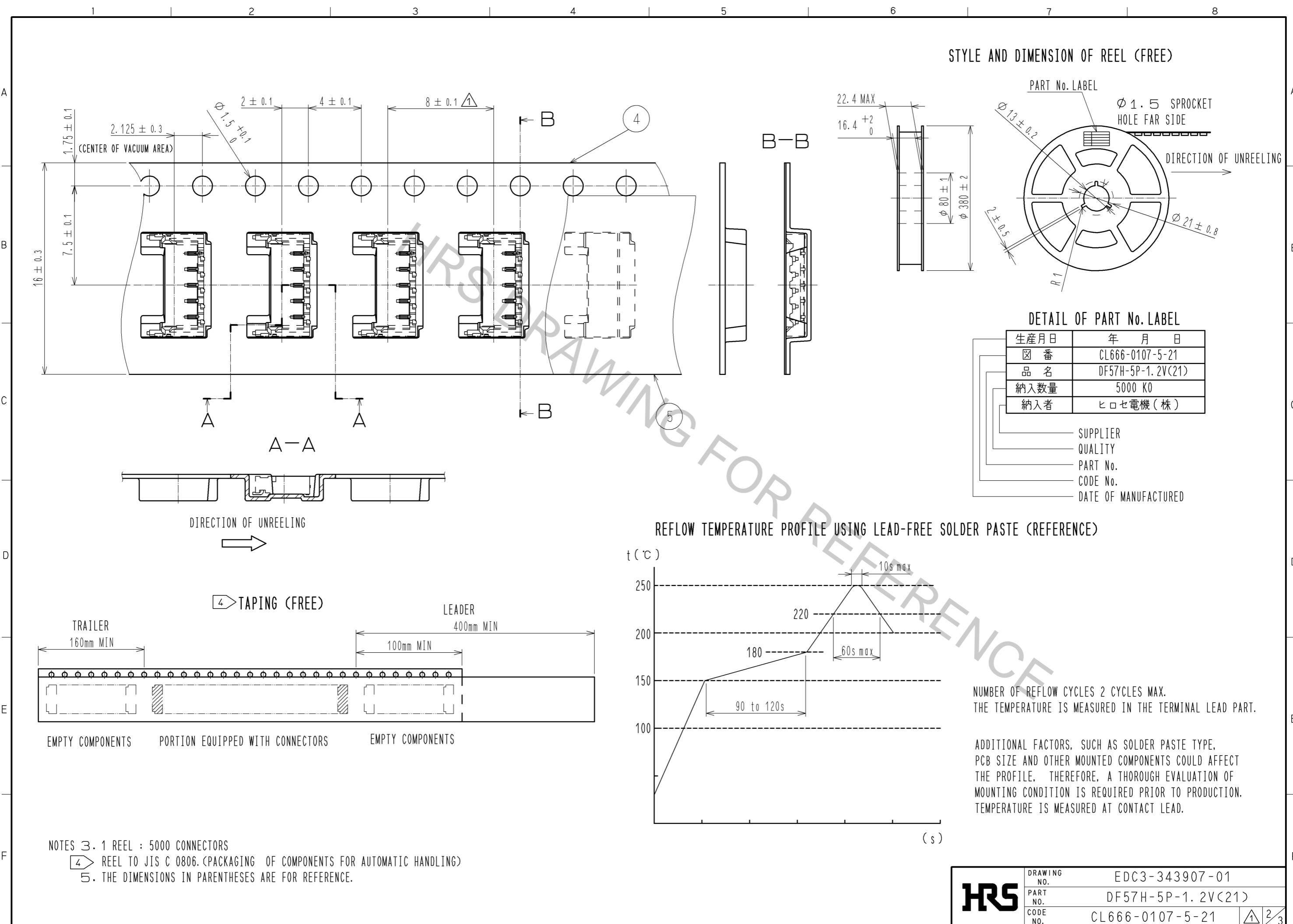


Apr.1.2017 Copyright 2017 HIROSE ELECTRIC CO., LTD. All Rights Reserved.

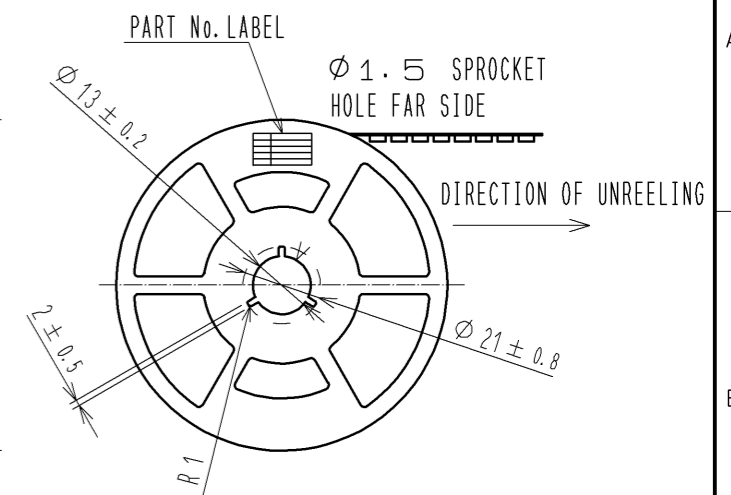


| 3 | BRASS | SURFACE:TIN PLATING 1μmMIN UNDER PLATING:NICKEL PLATING 0.5μmMIN | 6 | PS | REEL , BLACK |
|-------------------------|----------|---|----------------------------|-------------|-------------------------------|
| 2 | BRASS | SURFACE:TIN PLATING 1μmMIN UNDER PLATING:NICKEL PLATING 0.5μmMIN | 5 | POLYESTER | CLEAR (COVER TAPE) |
| 1 | LCP | UL94V-0,BLACK | 4 | PS | CLEAR (EMBOSSED CARRIER TAPE) |
| NO. | MATERIAL | FINISH , REMARKS | NO. | MATERIAL | FINISH , REMARKS |
| UNITS | mm | SCALE | FREE | COUNT | 2 |
| | | DESCRIPTION OF REVISIONS | DESIGNED | CHECKED | DATE |
| | | DIS-H-007104 | TS. KUMAZAWA | HK. UMEHARA | 12.08.06 |
| APPROVED : KI. AKIYAMA | | 12.03.19 | DRAWING NO. EDC3-343907-01 | | |
| CHECKED : HK. UMEHARA | | 12.03.19 | PART NO. DF57H-5P-1.2V(21) | | |
| DESIGNED : TS. KUMAZAWA | | 12.03.19 | CODE NO. CL666-0107-5-21 | | |
| DRAWN : TS. KUMAZAWA | | 12.03.19 | 1/3 | | |

Apr.1.2017 Copyright 2017 HIROSE ELECTRIC CO., LTD. All Rights Reserved.



STYLE AND DIMENSION OF REEL (FREE)

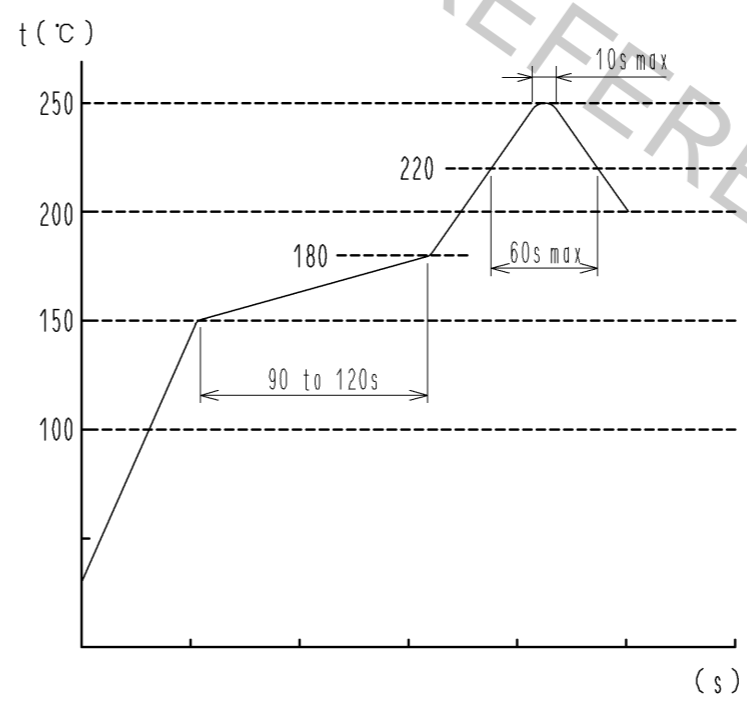


DETAIL OF PART No. LABEL

| | |
|------|-------------------|
| 生産月日 | 年 月 日 |
| 図 番 | CL666-0107-5-21 |
| 品 名 | DF57H-5P-1.2V(21) |
| 納入数量 | 5000 KO |
| 納入者 | ヒロセ電機(株) |

- SUPPLIER
- QUALITY
- PART No.
- CODE No.
- DATE OF MANUFACTURED

REFLOW TEMPERATURE PROFILE USING LEAD-FREE SOLDER PASTE (REFERENCE)



NUMBER OF REFLOW CYCLES 2 CYCLES MAX.
THE TEMPERATURE IS MEASURED IN THE TERMINAL LEAD PART.

ADDITIONAL FACTORS, SUCH AS SOLDER PASTE TYPE, PCB SIZE AND OTHER MOUNTED COMPONENTS COULD AFFECT THE PROFILE. THEREFORE, A THOROUGH EVALUATION OF MOUNTING CONDITION IS REQUIRED PRIOR TO PRODUCTION. TEMPERATURE IS MEASURED AT CONTACT LEAD.

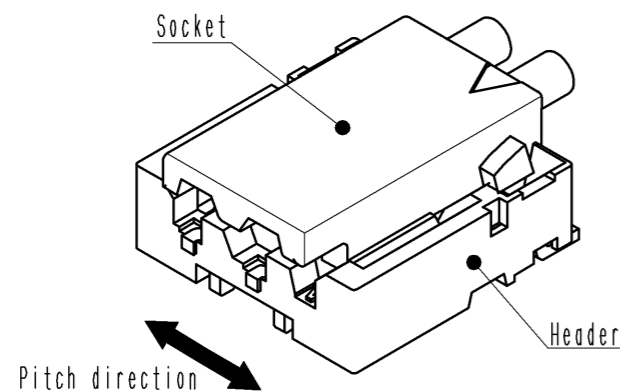
- NOTES
3. 1 REEL : 5000 CONNECTORS
 4. REEL TO JIS C 0806. (PACKAGING OF COMPONENTS FOR AUTOMATIC HANDLING)
 5. THE DIMENSIONS IN PARENTHESES ARE FOR REFERENCE.

| | | |
|------------|-------------|-------------------|
| HRS | DRAWING NO. | EDC3-343907-01 |
| | PART NO. | DF57H-5P-1.2V(21) |
| | CODE NO. | CL666-0107-5-21 |
| | | 2/3 |

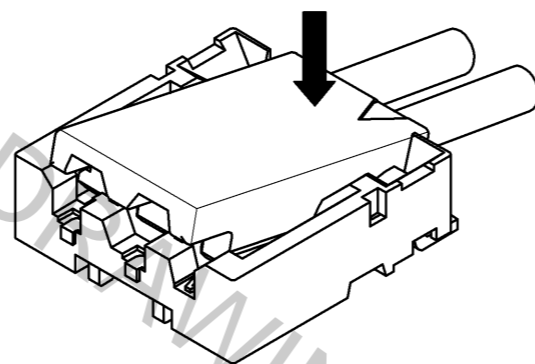
DF57 Series Mating / Unmating Operation Instruction

Mating

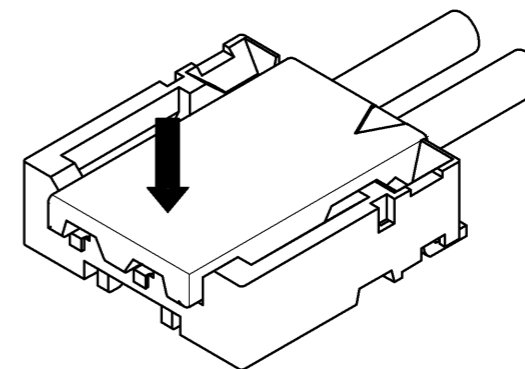
① By positioning the convexity of the socket sides to the header concavity, align the centers of the socket and the header in pitch direction.



② Slightly press the socket down at cable side to tilted angle.

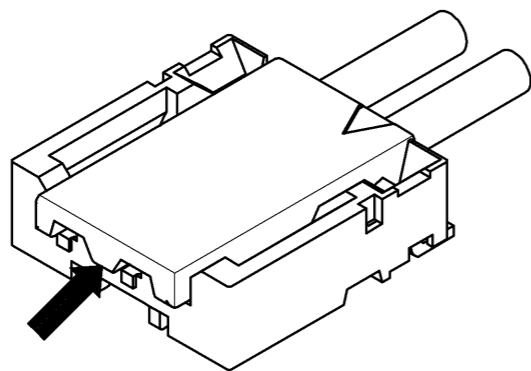


③ Press down at the lever side with stabilizing the cable side to insert. Mating completes.

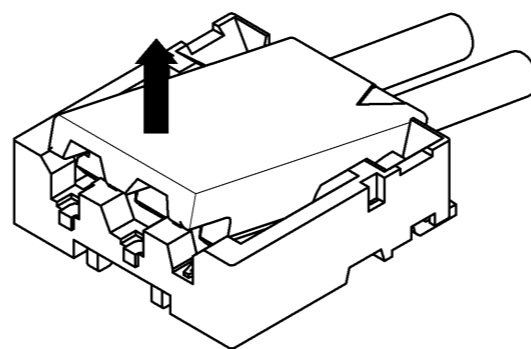


Unmating

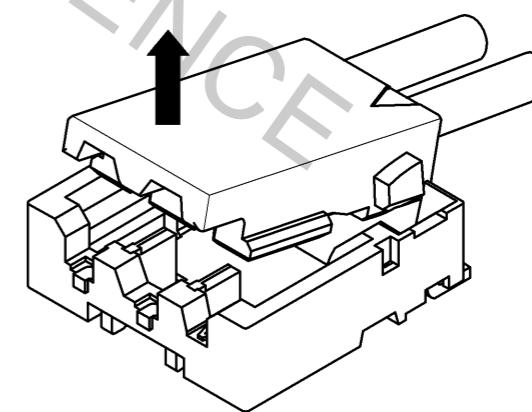
① Hook the lever with finger nail.

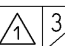


② Lift up to the upper direction and friction lock is released.



③ Lift up to the upper direction and positive lock is released. Removal completes.



| | | | |
|------------|-------------|-------------------|---|
| HRS | DRAWING NO. | EDC3-343907-01 |  |
| | PART NO. | DF57H-5P-1.2V<21> | |
| | CODE NO. | CL666-0107-5-21 | |
| | | | |