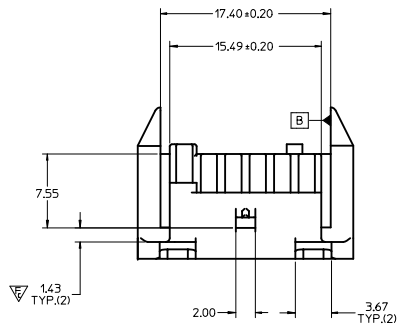
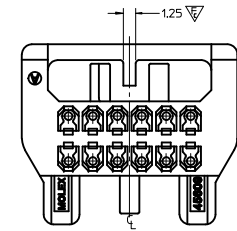
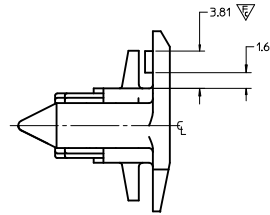
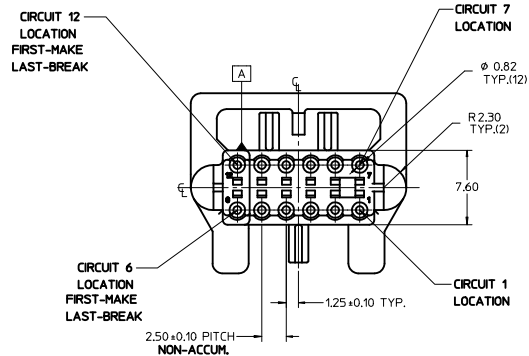


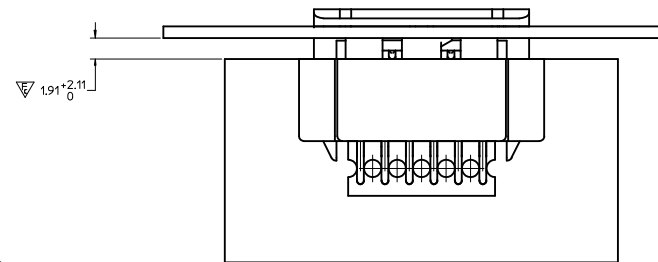
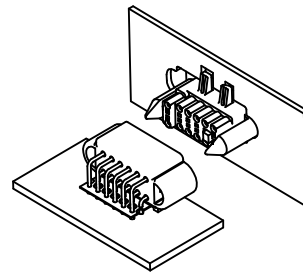
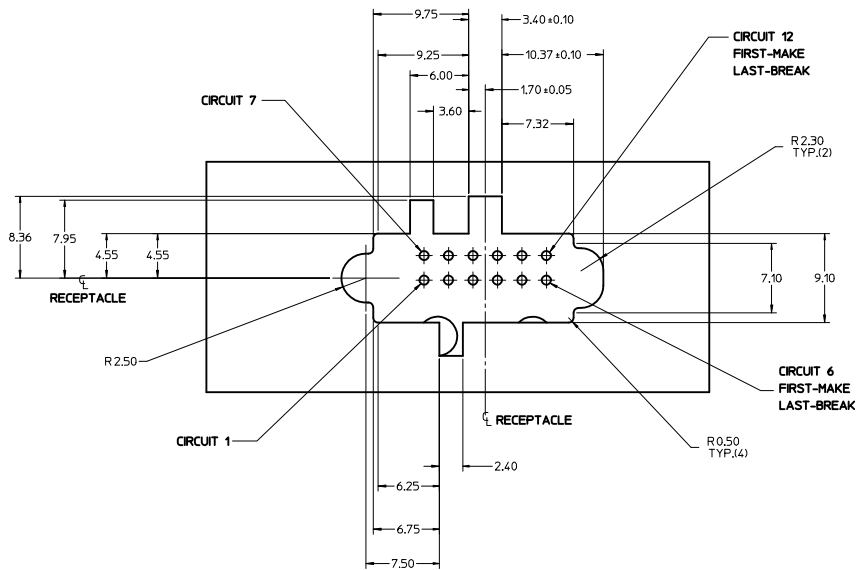
TERMINALS ARE TO BE ORIENTED AND LOADED
IN TO THE HOUSING AS SHOWN ABOVE



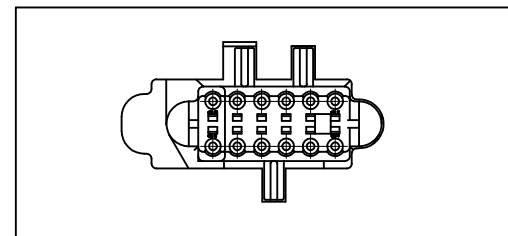
NOTES:

1. MATERIAL: POLYESTER, UL94V-0, COLOR: BLACK.
2. PRODUCT SPECIFICATION: TBD.
3. USES FEMALE CRIMP TERMINALS, SERIES 5263. (NOTE ORIENTATION OF TERMINALS)
4. PART MATES WITH MOLEX HEADER ASSEMBLY SERIES 45608.
5. PACKAGING: BULK.
6. SEE PAGE 2 OF 2 FOR PANEL CUTOUT DIMENSIONS AND THE ALLOWED BOARD TO PANEL MISALIGNMENT.
7. USE TOOL NUMBER 63813-1400 TO REMOVE TERMINALS FROM HOUSING WHEN NECESSARY.
CAUTION: TERMINALS MUST NOT BE REUSED AFTER REMOVAL.

| CHANGED STACK UP TO: IEC NO. UCF2011-2537 DRAWN/DROSCA CHKD: APPR.: JCOMERCI 2011/02/25 | QUALITY SYMBOLS ▽=0 ▽=0 ▽=6 | GENERAL TOLERANCES (UNLESS SPECIFIED) | | DIMENSION STYLE MM ONLY | SCALE 4:1 | DESIGN UNITS METRIC | THIRD ANGLE PROJECTION | | | | | | | | | | | | | | | | | | | |
|---|--------------------------------------|---|--|-----------------------------------|---------------------|-------------------------------|------------------------|--------|----------|-------|--------|----------|------|--------|---------|-------|--------|---|------|----|------------|--------|------------|--------|------------|----------|
| | | <table border="1"> <thead> <tr> <th></th> <th>mm</th> <th>INCH</th> </tr> </thead> <tbody> <tr> <td>4 PLACES</td> <td>±0.3</td> <td>±0.012</td> </tr> <tr> <td>3 PLACES</td> <td>±0.25</td> <td>±0.010</td> </tr> <tr> <td>2 PLACES</td> <td>±0.2</td> <td>±0.008</td> </tr> <tr> <td>1 PLACE</td> <td>±0.15</td> <td>±0.006</td> </tr> </tbody> </table> | | mm | INCH | 4 PLACES | ±0.3 | ±0.012 | 3 PLACES | ±0.25 | ±0.010 | 2 PLACES | ±0.2 | ±0.008 | 1 PLACE | ±0.15 | ±0.006 | <table border="1"> <thead> <tr> <th>DATE</th> <th>BY</th> </tr> </thead> <tbody> <tr> <td>09/06/2006</td> <td>DROSCA</td> </tr> <tr> <td>09/06/2006</td> <td>DROSCA</td> </tr> <tr> <td>09/06/2006</td> <td>JCOMERCI</td> </tr> </tbody> </table> | DATE | BY | 09/06/2006 | DROSCA | 09/06/2006 | DROSCA | 09/06/2006 | JCOMERCI |
| | mm | INCH | | | | | | | | | | | | | | | | | | | | | | | | |
| 4 PLACES | ±0.3 | ±0.012 | | | | | | | | | | | | | | | | | | | | | | | | |
| 3 PLACES | ±0.25 | ±0.010 | | | | | | | | | | | | | | | | | | | | | | | | |
| 2 PLACES | ±0.2 | ±0.008 | | | | | | | | | | | | | | | | | | | | | | | | |
| 1 PLACE | ±0.15 | ±0.006 | | | | | | | | | | | | | | | | | | | | | | | | |
| DATE | BY | | | | | | | | | | | | | | | | | | | | | | | | | |
| 09/06/2006 | DROSCA | | | | | | | | | | | | | | | | | | | | | | | | | |
| 09/06/2006 | DROSCA | | | | | | | | | | | | | | | | | | | | | | | | | |
| 09/06/2006 | JCOMERCI | | | | | | | | | | | | | | | | | | | | | | | | | |
| MATERIAL NO. 45609-0012 | DOCUMENT NO. SD-45609-012 | SHEET NO. 1 OF 2 | | | | | | | | | | | | | | | | | | | | | | | | |
| DRAFT WHERE APPLICABLE MUST REMAIN WITHIN DIMENSIONS | | | | | | | | | | | | | | | | | | | | | | | | | | |
| THIS DRAWING CONTAINS INFORMATION THAT IS PROPRIETARY TO MOLEX INCORPORATED AND SHOULD NOT BE USED WITHOUT WRITTEN PERMISSION | | | | | | | | | | | | | | | | | | | | | | | | | | |

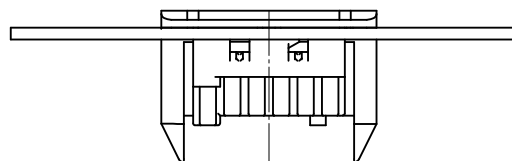


PANEL TO PCB STACK HEIGHT

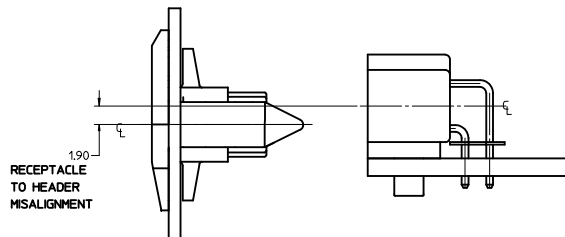


RECEPTACLE INSERT POSITIONING

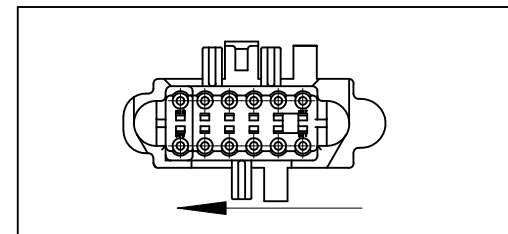
PANEL CUTOUT
PANEL THICKNESS 1.20±0.12MM



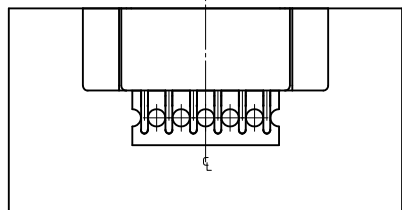
2.62
RECEPTACLE
TO HEADER
MISALIGNMENT



1.90
RECEPTACLE
TO HEADER
MISALIGNMENT



RECEPTACLE SLIDES
INTO MOUNTED POSITION



| | | | | | | | |
|--|--|---|---|------------------------------------|---------------------------------------|------------------------|--|
| ENTER DESCRIPTION IEC NO. UCP2011-2537 DRAWN/DROSCA CHKD: APPR.: JCOMERCI 2011/02/22 2011/02/25 | QUALITY SYMBOLS | GENERAL TOLERANCES (UNLESS SPECIFIED) | DIMENSION STYLE | SCALE | DESIGN UNITS | THIRD ANGLE PROJECTION | |
| | 0 0 1 | mm INCH | 4 PLACES ± 3 PLACES ± 2 PLACES ±0.25 1 PLACE ±0.3 ANGULAR ±1/2° | MM ONLY DATE DATE DATE | 4:1 | METRIC | TITLE SPOX BMI RECEPTACLE HOUSING, 12 PIN PANEL MOUNT |
| | DRAFT WHERE APPLICABLE MUST REMAIN WITHIN DIMENSIONS | MATERIAL NO. 45609-0012 | DRAWN BY DROSCA 09/06/2006 | CHECKED BY DROSCA 09/06/2006 | APPROVED BY JCOMERCI 09/06/2006 | MOLEX INCORPORATED | SHEET NO. 2 OF 2 |
| | SIZE D | THIS DRAWING CONTAINS INFORMATION THAT IS PROPRIETARY TO MOLEX INCORPORATED AND SHOULD NOT BE USED WITHOUT WRITTEN PERMISSION | | | | | |