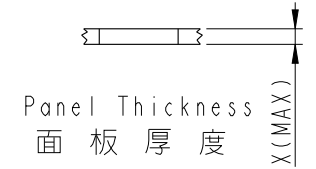
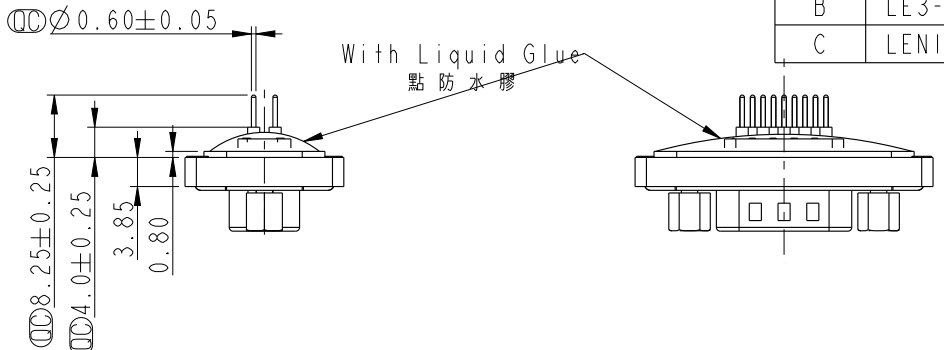
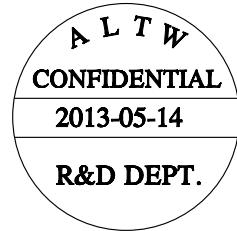
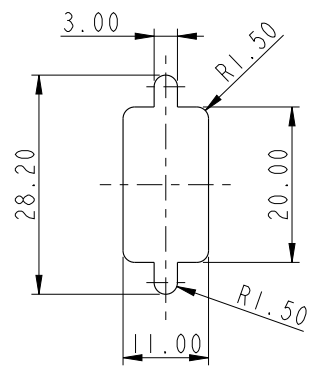
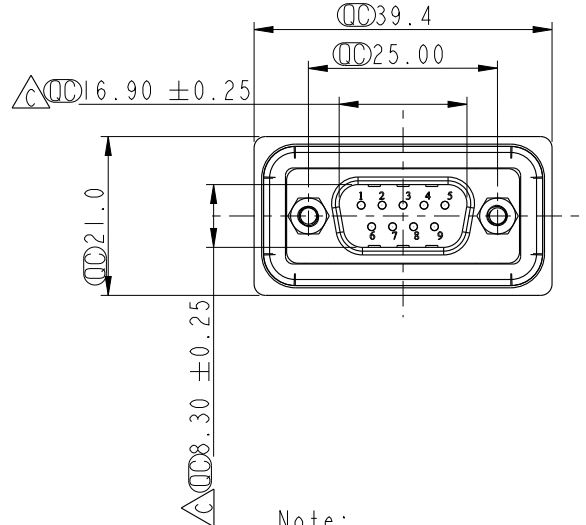
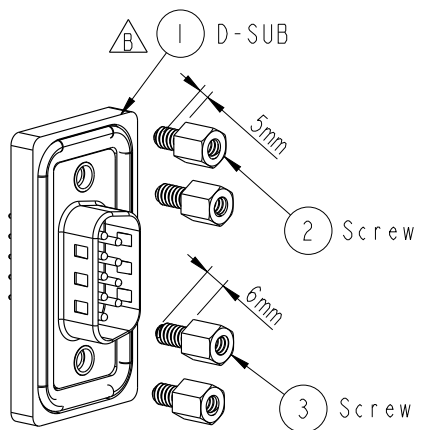


REV.	ECN NO.	DATE	SIGN	DESCRIPTION
B	LE3-710065	2006/12/15	DongYaLi	Move DOR0038S170 To ZSE00100585
C	LEN1350211	2013/05/14	Yulong	Change the Dimension

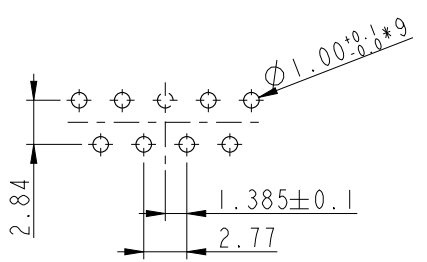


Screw L=5.0 For Panel Thickness Under 1.2mm
適用板厚為 1.2mm 以下

Screw L=6.0 For Panel Thickness Between 1.2~2.0mm
適用板厚為 1.2~2.0mm



Recommended Panel Cut-Out
建議控孔尺寸



9 Pin Male Connector
PCB Pin Layout

Scale 2:1

- Note:
- * \varnothing Important Dimension.
 - * Waterproof Rate : IP68
IP68:1M of depth of water 24 hours
(防水等級: IP68)
(1米水深24小時)
 - * Do Mating Test After Glued
點膠後, 須作對插測試
 - * D-SUB Conn. : Black Core , PBT
 - * Plastic Jacket : Black , Nylon+GF
 - * Pin : Copper Alloy , Gold Plated
 - * Ring : Light Blue, Silicone
 - * Screw : Copper Alloy, Nickel Plated, #4-40 UNC



UNIT:mm			TITLE D-SUB Conn. Δ Panel Screw DB9P M Conn. M Pin
TOLERANCE .X ± 0.25 .XX ± 0.1 .XXX ± 0.05 ANGLES $\pm 1^\circ$	SCALE 1:1	SIZE A4	SHEET 1 OF 1
	REV. C	WC-REV. A.4	\varnothing : Inspection item

Amphenol LTW
安費諾亮泰企業股份有限公司

ITEM NO SDB-09PMMP-SL8001	DRAWN BY Yulong_wang	DATE 2013-05-14
DWG NO SDB-09PMMP-SL8001	CHECKED BY Victor	DATE 2013-05-14
CUSTOMER ALTW	APPROVED BY Maslow	DATE 2013-05-14

THIS DOCUMENT IS SUBJECT TO CHANGE WITHOUT NOTICE. IT IS CONFIDENTIAL AND A PROPERTY OF Amphenol LTW. DISCLOSURE TO THIRD PARTY HAS TO BE AUTHORIZED BY Amphenol LTW.