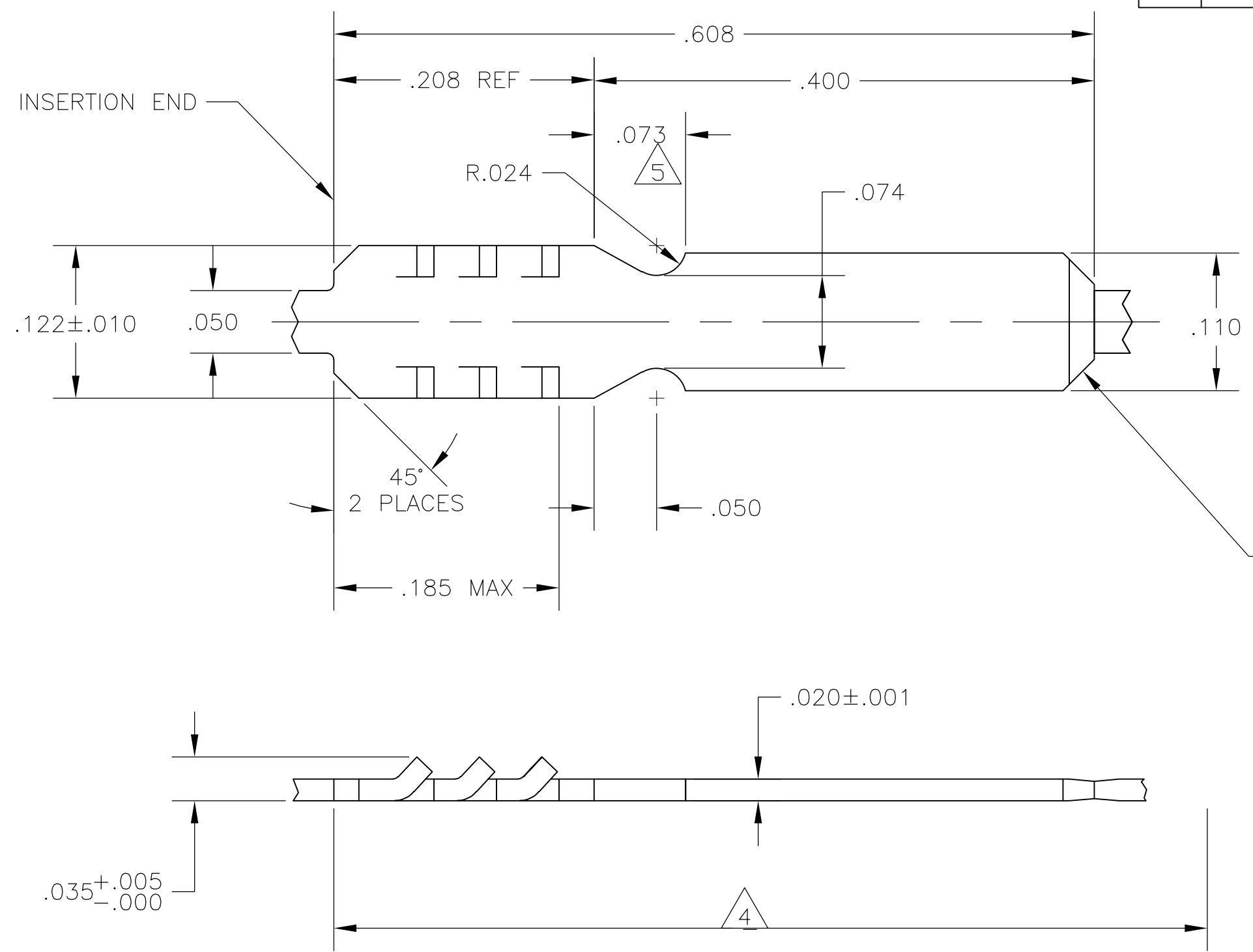


THIS DRAWING IS UNPUBLISHED. RELEASED FOR PUBLICATION
 © COPYRIGHT BY TYCO ELECTRONICS CORPORATION. ALL RIGHTS RESERVED.

LOC	DIST	REVISIONS			
P	LTR	DESCRIPTION	DATE	DWN	APVD
		D	REVISED PER ECR-09-007435	3/26/09	SS MS



- 1 CONTINUOUS STRIP ON REELS.
- 2 A MAXIMUM OF TWO (2) SPLICES PER REEL.
- 3 .000150 MIN PRE-TIN PLATE OVER .000100 MIN COPPER UNDERPLATE.
- 4 FEED OVER EIGHT (8) TERMINALS SHALL BE 5.360±.010.
- 5 NO BURR PERMISSIBLE IN TIE-OFF AREA.

63945-1
 PART NUMBER

THIS DRAWING IS A CONTROLLED DOCUMENT.		DWN M.S. FEHER 03MAY2006	Tyco Electronics Corporation Harrisburg, PA 17105-3608		
DIMENSIONS: INCHES	TOLERANCES UNLESS OTHERWISE SPECIFIED:	CHK G.D. PORTA 03MAY2006	NAME BOBBIN TAB		
		APVD G.D. PORTA 03MAY2006	PRODUCT SPEC -		
MATERIAL H04 BRASS	FINISH -	APPLICATION SPEC -	SIZE A3	CAGE CODE 00779	DRAWING NO G-63945
		WEIGHT -	RESTRICTED TO -		
CUSTOMER DRAWING			SCALE 10:1	SHEET 1 OF 1	REV D