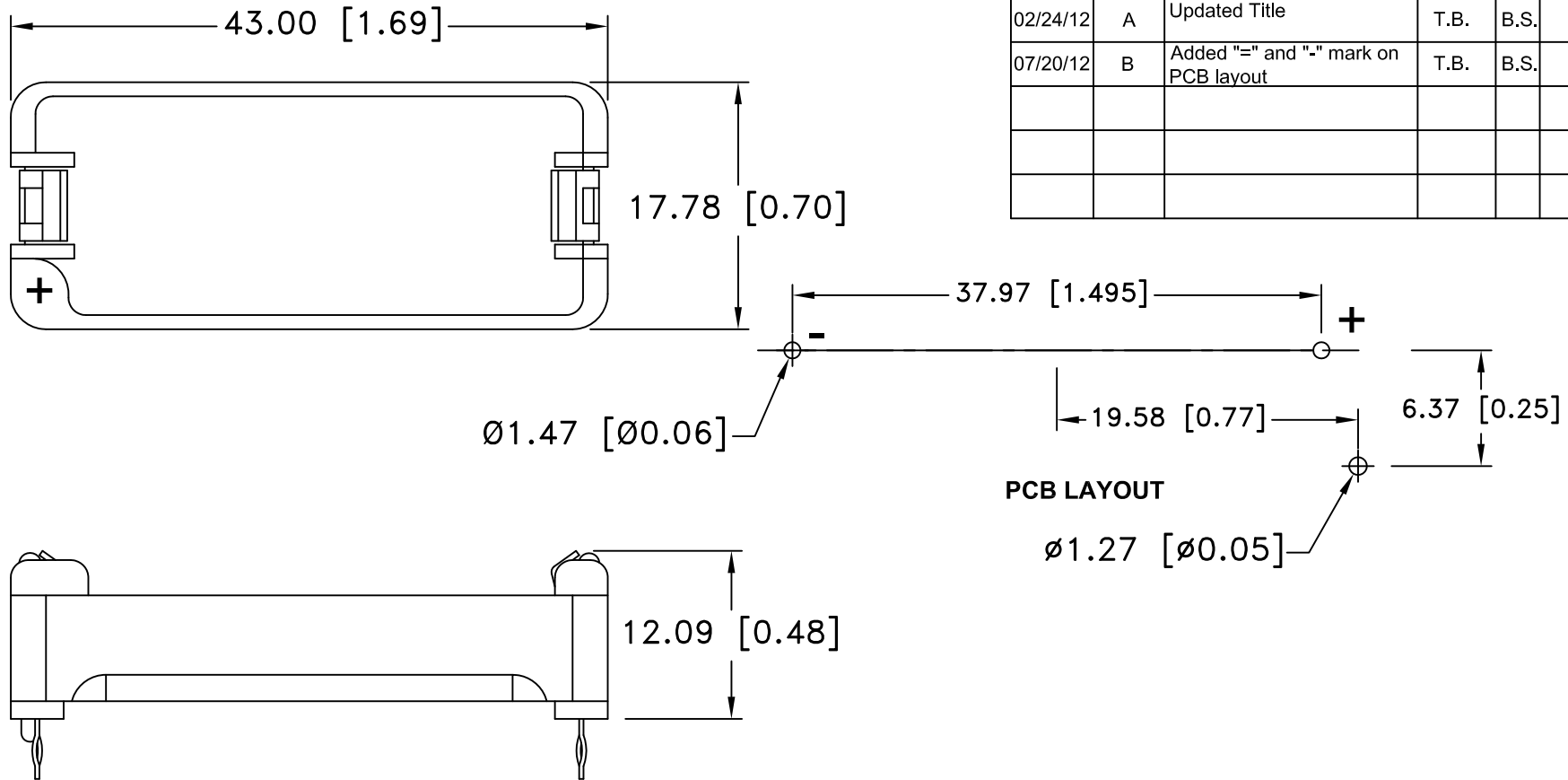


Date	SYM	REVISION RECORD	AUTH	DR.	CK.
02/24/12	A	Updated Title	T.B.	B.S.	
07/20/12	B	Added "=" and "-" mark on PCB layout	T.B.	B.S.	




NOTES:

1. MATERIAL:

HOUSING : POLYCARBONATE WITH 30% GLASS FILL
 CONTACTS: NICKEL PLATED STEEL

ROHS COMPLIANT

Tolerance (Except as noted)	 Memory Protection Devices, Inc 200 Broad Hollow Road, Farmingdale, New York 11735	Scale	Drawn By B.S.
			Approved By T.B.
decimal $\pm .5$ (.020)	Title ONE 123A CELL HOLDER		
Fractional $\pm .8$ (.030)		Date 07/20/12	Drawing Number BH123A
Angular $\pm 3^\circ$			