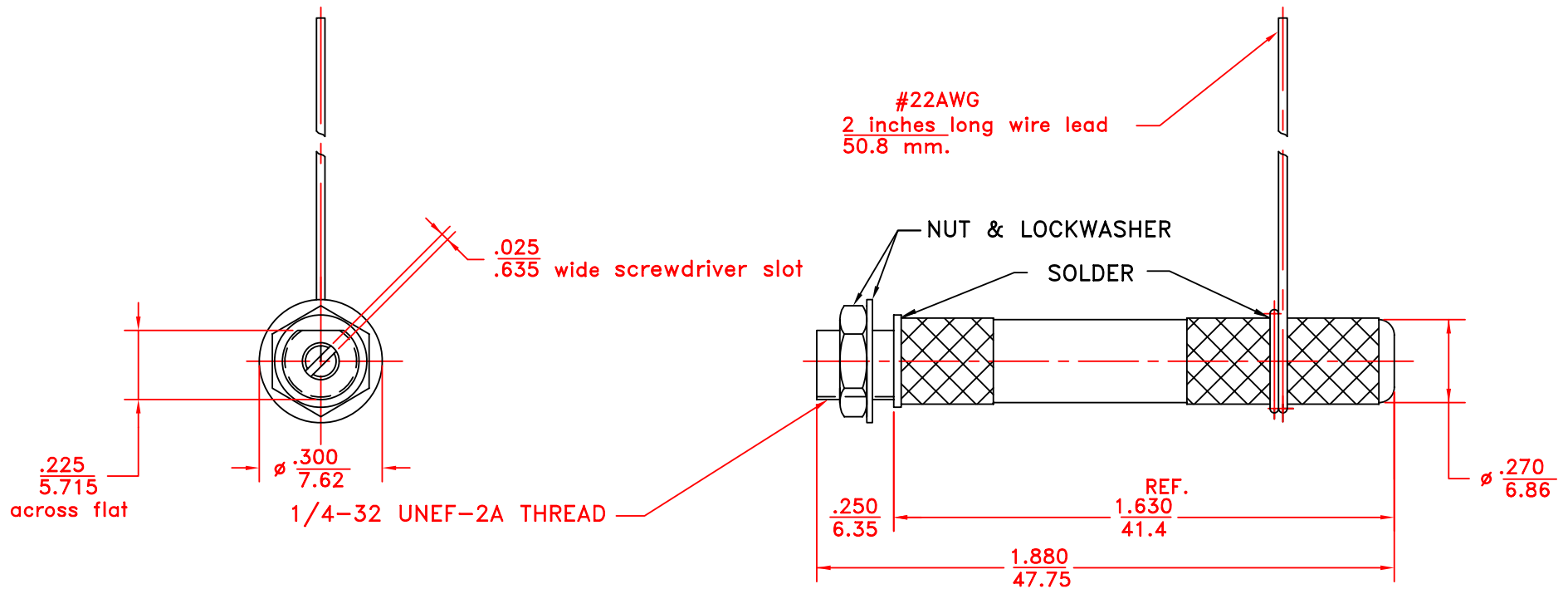


REV	DESCRIPTION	DATE	APP
00	NEW DRAWING	03/19/12	



NOTES:

1. Capacitance: Cmax over 5.0 pF
2. Capacitance: Cmin less than 0.5 pF
3. Working voltage: 4.0 kVDC
4. Withstanding voltage: 8.0 kVDC
5. Quality factor "Q" @ 25 MHz over 2000
6. Torque .5 to 1.0 oz-in
7. Construction: 40 psi sealed, non-magnetic
8. Operating temperature : below  $-55^{\circ}\text{C}$  to  $+125^{\circ}\text{C}$ .
9. Dimensions: in/mm
10. Rotational life: 10,000 turns

TOLERANCES: (EXCEPT AS NOTED)	SPRAGUE GOODMAN ELECTRONICS INC. 1700 SHAMES DRIVE WESTBURY, NY 11590		
DECIMAL: $\pm 0.002$ in $\pm 0.051$ mm	MATERIAL:	SCALE: 2:1	DRAWN BY: R. LEVIN APPROVED: D. DITLYA
FRACTIONAL: 1/64	TITLE: OUTLINE DWG SGNMNC1054	USED FOR:	
ANGULAR: 1°	DATE: 03/19/12	DRAWING NUMBER SGNMNC1054	REV. 00