

SCHEMATIC

SPECIFICATIONS

FUNCTION:
1PNO OFF-(ON) + 1PNC ON-(OFF)

RATING:
2A 48VDC

ILLUMINATION VOLTAGE:
12V 20mA

CONTACT RESISTANCE:
Initial: 50mΩ Max. at 1A, 12VDC
1,000MΩ Min. at 500VDC

INSULATION RESISTANCE:
2,000VAC Min. for 1 Minute

DIELECTRIC STRENGTH:
50,000 Cycles

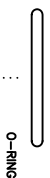
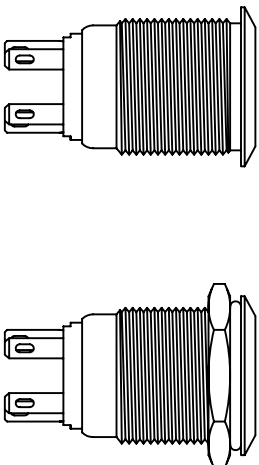
ELECTRICAL LIFE:
1,000,000 Cycles

MECHANICAL LIFE:
50,000 Cycles

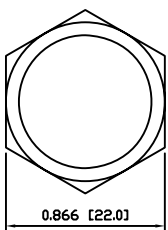
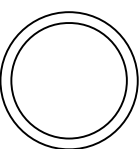
TEMPERATURE:
Operating: -20°C to 70°C

INGRESS PROTECTION:
IP65

APPROVALS:
ROHS
COMPLIANT



EXPLODED VIEW



ASSEMBLED VIEW

COLORS AND FINISH

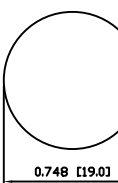
BEZEL:
Stainless Steel
Machine Finish

ACTUATOR:
Stainless Steel
Machine Finish

ILLUMINATION:
Blue (Forward)
Blue (Reverse)

MARKING:
None

SUGGESTED PANEL CUTOUT



MAXIMUM PANEL THICKNESS: 0.472 [12.0mm]

REV.	DATE	BY	CHK
A	09/07/24	CAB	
B	09/07/24	CAB	
A	09/10/19	CAB	

THE INFORMATION CONTAINED IN THIS DOCUMENT IS PROPRIETARY TO E-SWITCH AND IS NOT TO BE COPIED OR TRANSMITTED

REV.	DATE	BY	CHK
A	09/18/23	TC	

SCALE: 1:1
DRAWING NOT TO SCALE

REV.	DATE	BY	CHK
A	06-19-12		



PV4F2Y0SS-244

DRAWING NUMBER: 52-PV4F2Y0SS244

REVISION A