

# 8600 Series Microminiature Pushbutton Switches



A  
Pushbutton

## Features/Benefits

- Available with overtravel
- Normally closed models available
- Microminiature size ideal for applications where space is limited
- RoHS compliant

## Typical Applications

- Detection
- Telecommunications and networking equipment
- Computers and peripherals



Models Available

## Specifications

CONTACT RATING: Q contact material (8631, 8632 Models):  
500 mA @ 120 V AC or 28 V DC; 250 mA @ 250 V AC;  
(8633 Model): 250 mA @ 120 V AC or 28 V DC; 125 mA  
@ 250 V AC. See page A-73 for additional ratings.

### ELECTRICAL LIFE:

8631 and 8633 MODELS: 250,000 actuations at full load.  
8632 MODEL: 100,000 actuations at full load.

CONTACT RESISTANCE: Below 30 mΩ typ. initial @  
2-4 V DC, 100 mA, for both silver and gold plated contacts.

INSULATION RESISTANCE: 109 Ω min.

DIELECTRIC STRENGTH: 500 Vrms min. @ sea level.

OPERATING TEMPERATURE: -30°C to 65°C.

SOLDERABILITY: Per MIL-STD-202F method 208D, or  
EIA RS-186E method 9.

## Materials

CASE: Glass filled phenolic or diallyl phthalate (DAP), (UL94V-0).

PLUNGER: Glass filled nylon (UL94V-0), black standard.

BUSHING: Brass, nickel plated.

CONTACTS: Q contact material: Coin silver, silver plated.  
See page A-73 for additional contact materials.

### TERMINALS:

8631, 8632 MODELS: Copper alloy, silver plated.

8633 MODEL: Q contact material: Coin silver.

See page A-73 for additional contact materials.

### TERMINAL SEAL:

8633 MODEL: Epoxy.

8631, 8632 MODELS: Terminals insert molded.

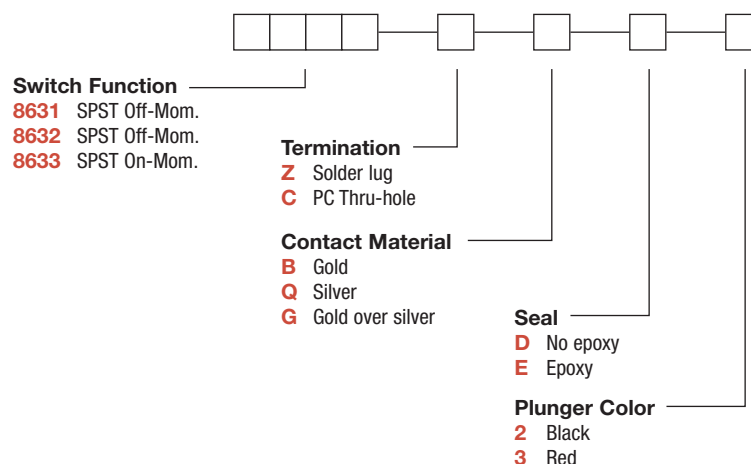
HARDWARE: Nut: Brass, nickel plated.

**NOTE:** Any models supplied with Q, B or G contact material are RoHS compliant.

**NOTE:** Specifications and materials listed above are for switches with standard options.  
For information on specific and custom switches, consult Customer Service Center.

## Build-A-Switch

To order, simply select desired option from each category and place in the appropriate box. Available options are shown and described on pages A-72 and A-73. For additional options not shown in catalog, consult Customer Service Center.



Dimensions are shown: Inches (mm)  
Specifications and dimensions subject to change



# 8600 Series Microminiature Pushbutton Switches

Pushbutton  
A

## SWITCH FUNCTION

NO. POLES	MODEL NO.	SWITCH FUNCTION		TOTAL TRAVEL	ACTUATION FORCE	SCHEMATIC
		POS. 1	POS. 2			
SP	<b>8631</b>	OFF	MOM.	.040 (1,02) TYP.	5 oz (140g) TYP.	N.O.
<b>SPST</b> <p>Part number shown: 8631ZQD2</p> <p>Terminals Insert Molded</p>						
SP	<b>8632</b>	OFF	MOM.	.106 (2,69) TYP. with overtravel .024 (0,61) TYP.	6.25 oz (177g) TYP.	N.O. with overtravel
<b>SPST</b> <p>Part number shown: 8632ZQD2</p> <p>Terminals Insert Molded</p>						
SP	<b>8633</b>	ON	MOM.	.048 (1,22) TYP.	5 oz (140g) TYP.	N.C.
<b>SPST</b> <p>Part number shown: 8633ZQE2</p>						

MOM. = Momentary

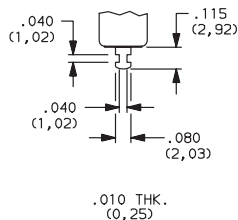
**NOTE:** Caps available for plunger options, see page A-73.

## TERMINATIONS

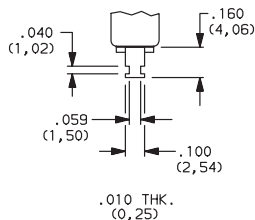
**Z** SOLDER LUG

**C** PC THRU-HOLE

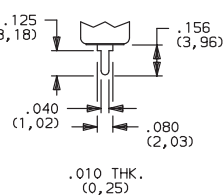
8631, 8632 models only.



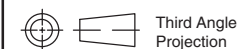
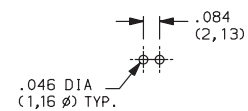
8633 models only.



8631, 8632 models only.



**PC MOUNTING**



Dimensions are shown: Inches (mm)  
Specifications and dimensions subject to change



# 8600 Series Microminiature Pushbutton Switches



A  
Pushbutton

## CONTACT MATERIAL

OPTION CODE	RoHS COMPLIANT *	RoHS COMPATIBLE *	CONTACT MATERIAL	TERMINAL PLATING	RATINGS	
<b>B</b>	YES	YES	GOLD 1	GOLD 1	LOW LEVEL/ DRY CIRCUIT	0.4 VA MAX. @ 20 V AC OR DC MAX.
<b>Q</b>	YES	YES	SILVER 4	SILVER 5	POWER	8631, 8632 MODELS: 500 mA @ 120 V AC OR 28 V DC; 250 mA @ 250 V AC. 8633 MODELS: 250 mA @ 120 V AC OR 28 V DC; 125 mA @ 250 V AC.
<b>G</b>	YES	YES	GOLD OVER SILVER 4	GOLD 3	LOW LEVEL/DRY CIRCUIT OR POWER	0.4 VA MAX @ 20 V AC OR DC MAX. OR 8631, 8632 MODELS: 500 mA @ 120 V AC OR 28 V DC; 250 mA @ 250 V AC. 8633 MODELS: 250 mA @ 120 V AC OR 28 V DC; 125 mA @ 250 V AC.

\* Note: See Technical Data section of this catalog for RoHS compliant and compatible definitions and specifications.

1 CONTACTS & TERMINALS: Copper alloy, with gold plate over nickel plate.

2 CONTACTS: Coin silver, with gold plate over nickel plate.

3 TERMINALS: Copper alloy, with gold plate over nickel plate.  
8633 model only: Coin silver, with gold plate over nickel plate.

4 CONTACTS: Coin silver, silver plated.

5 TERMINALS: Copper alloy, silver plated. 8633 model only: coin silver.

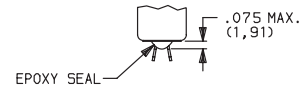
**NOTE:** Any models supplied with Q, B or G contact material are RoHS compliant.

8631, 8632 models with all options when ordered with G or Q contact material.  
Q contact material standard with C, Z terminations.

## SEAL

**D** NO EPOXY SEAL

**E** EPOXY SEAL



Not available on 8633 model.  
Standard on 8631, 8632 models.

Not available on 8631, 8632 models.  
Standard on 8633 model only.

## PLUNGER COLOR

OPTION CODE	COLOR
<b>2</b>	BLACK
<b>3</b>	RED

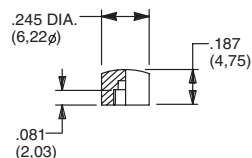
## AVAILABLE HARDWARE

Cap

**PART NO.**

**785101000** WHITE  
**785102000** BLACK  
**785103000** RED

Material: Nylon  
Finish: Gloss



**NOTE:** Other cap colors available, consult Customer Service Center.



Dimensions are shown: Inches (mm)  
Specifications and dimensions subject to change

**C&K**