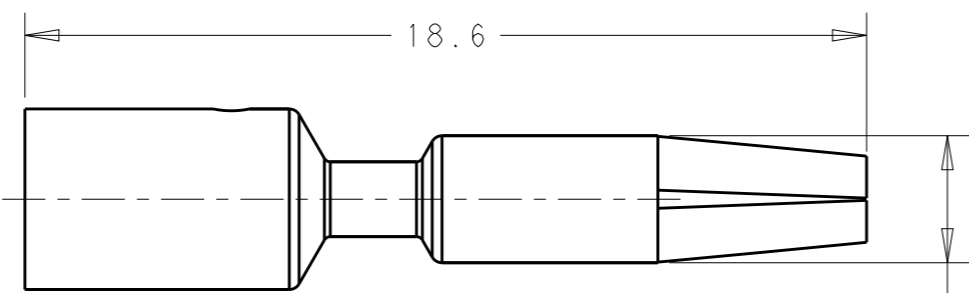
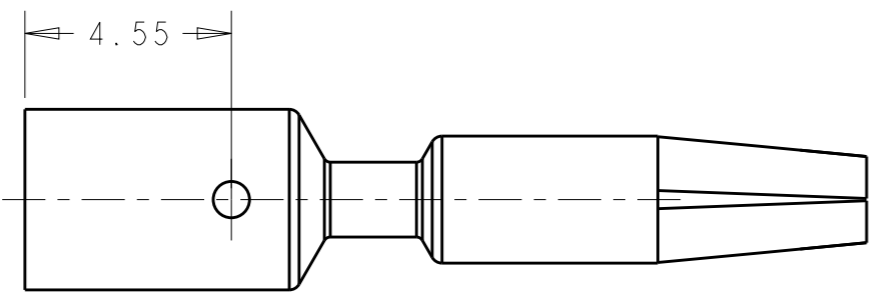
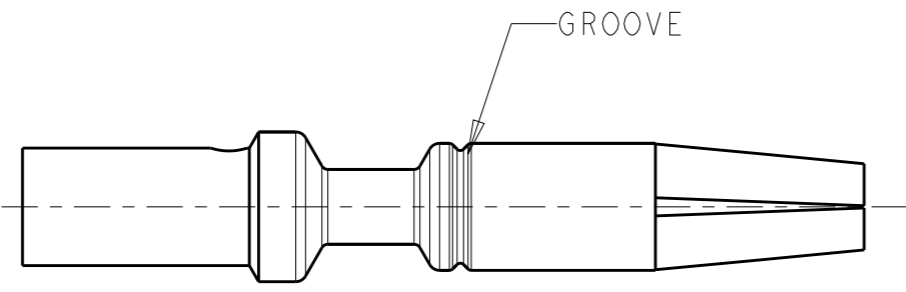
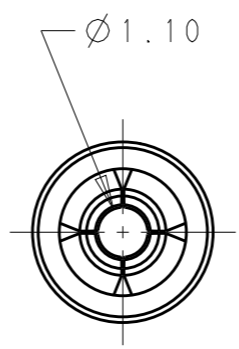


THIS DRAWING IS UNPUBLISHED. RELEASED FOR PUBLICATION 20  
© COPYRIGHT 20 BY - ALL RIGHTS RESERVED.

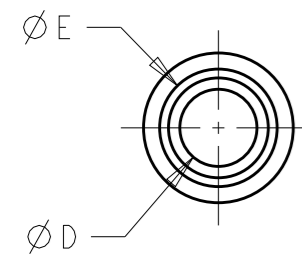
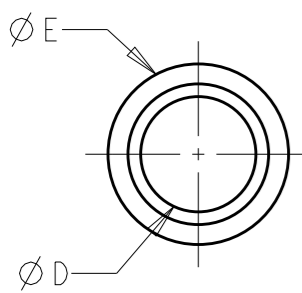
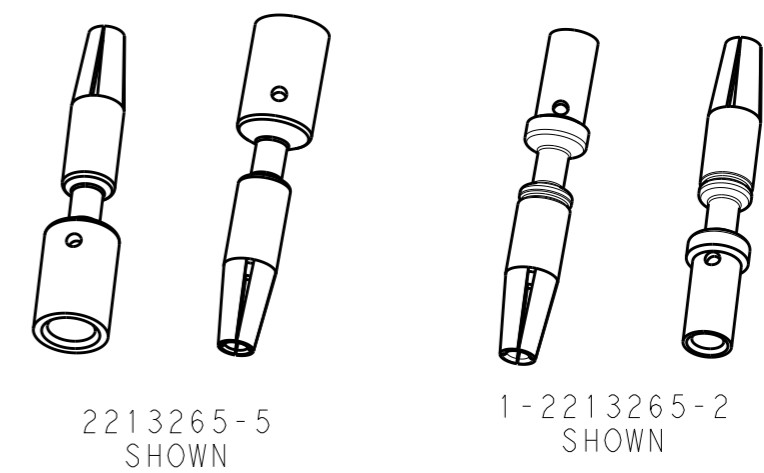
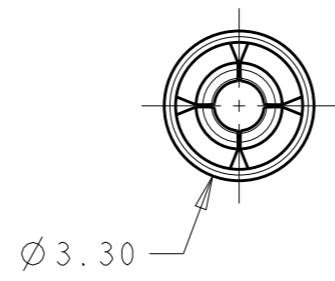
| LOC | DIST | REVISIONS   |                              |           |          |
|-----|------|-------------|------------------------------|-----------|----------|
| P   | LTR  | DESCRIPTION | DATE                         | DWN       | APVD     |
| -   | -    | A           | REVISED AS PER ECR-15-005925 | 21APR2015 | RS<br>JL |



STYLE A



STYLE B



- NOTES:
- MATERIALS AND FINISH:  
COPPER ALLOY, FINISH: Sn OVER Ni
  - MUST COMPLY WITH DIRECTIVE 2002/95/EC (ROHS)
  - THIS PRODUCT HAS NOT COMPLETED VALIDATION TESTING

|            |          |          |               |              |             |
|------------|----------|----------|---------------|--------------|-------------|
| 16/18      | 2.59     | 1.70     | 1             | B            | 1-2213265-2 |
| 14         | 3.98     | 2.54     | N/A           | A            | 2213265-5   |
| WIRE (AWG) | DIM. "E" | DIM. "D" | NO OF GROOVES | BARREL STYLE | PART NO     |

|  |  |                                 |  |                    |                         |
|--|--|---------------------------------|--|--------------------|-------------------------|
| THIS DRAWING IS A CONTROLLED DOCUMENT.                                 |  | DWN<br>RAVI.S<br>28MAY2013      | TE Connectivity                                  |                    |                         |
| DIMENSIONS:<br>mm  |  | CHK<br>C GINGRICH<br>28MAY2013  |  |                    |                         |
| TOLERANCES UNLESS OTHERWISE SPECIFIED:                                 |  | APVD<br>C GINGRICH<br>28MAY2013 | NAME<br>MACHINED SOCKET CONTACT<br>NECTOR M-LINE |                    |                         |
| 0 PLC ±<br>1 PLC ±0.3<br>2 PLC ±0.15<br>3 PLC ±<br>4 PLC ±<br>ANGLES ± |  | PRODUCT SPEC<br>108-133014      | RESTRICTED TO                                    |                    |                         |
| MATERIAL NOTE 1  |  | APPLICATION SPEC<br>114-32111   | SIZE<br>A3                                       | CAGE CODE<br>00779 | DRAWING NO<br>C-2213265 |
| FINISH NOTE 1  |  | WEIGHT<br>-                     | SCALE 4:1 SHEET 1 OF 1 REV A                     |                    |                         |
|  |  | Customer Drawing                |  |                    |                         |