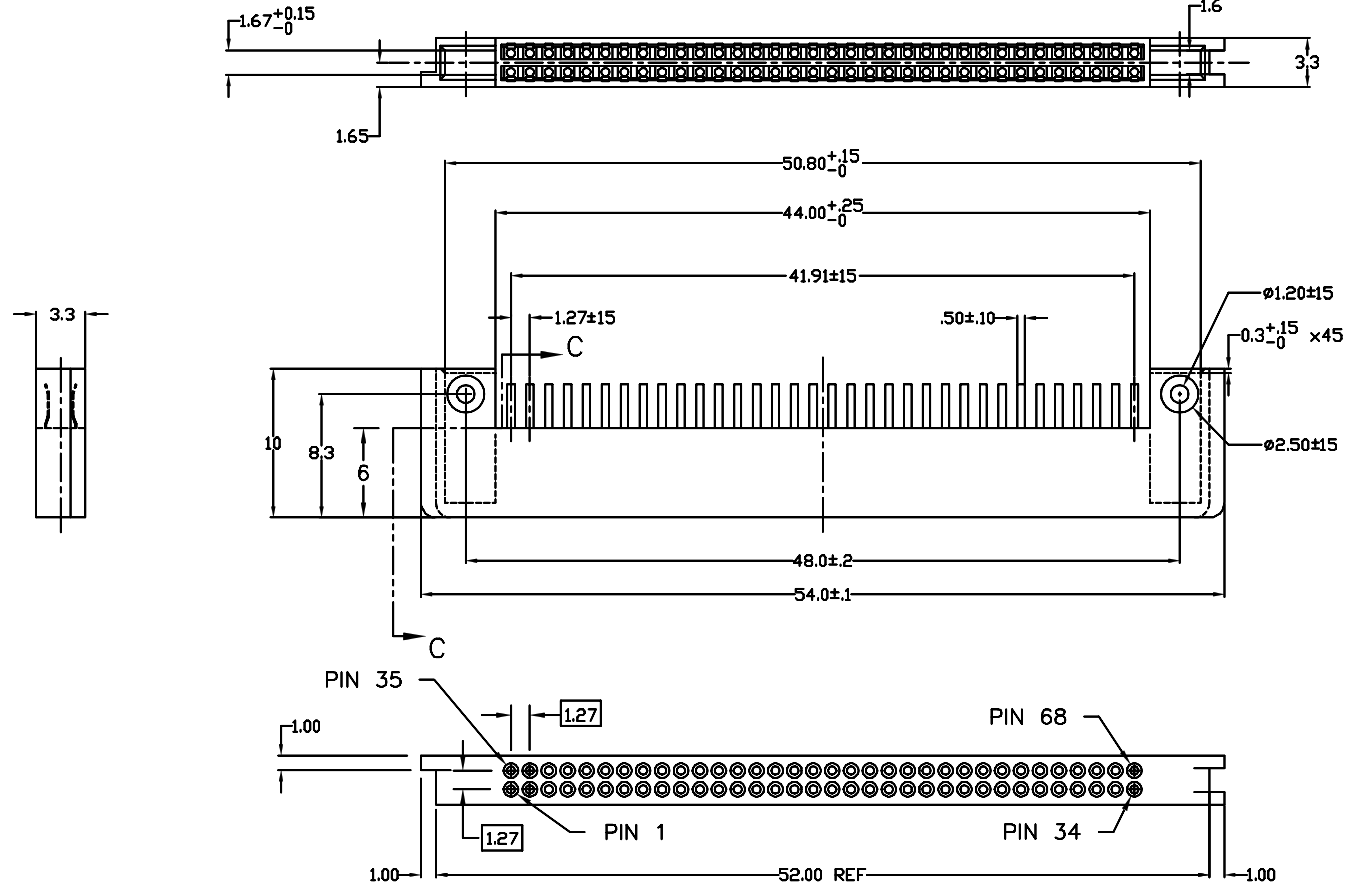


PRODUCT NO.
95622-003
95622-003LF
95622-004LF



NOTES:

- MATERIAL:  
CONTACT - BeCu  
PLASTIC HOUSING - GLASS REINFORCED LCP AS PER UL-94V-0  
COLOR: BLACK
- PLATING:  
CONTACT-ALL OVER 0.5µm MIN. NICKEL UNDER PLATING  
0.1µm MIN GOLD OVER 0.5µm MIN. PALLADIUM NICKEL  
SELECTIVE PLATING ON CONTACT  
2.5µm MIN. TIN/LEAD PLATING ON SOLDER TAIL(ONLY FOR 95622-003)  
LEAD FREE SOLDER TAIL PLATING 2µm(80u") MIN MATTE TIN(ONLY FOR 95622-003LF) OR 7.6µm MIN MATTE TIN (ONLY FOR 95622-004LF )  
OVER 1.27µm(50u") MIN NICKEL UNDERPLATE.
- MATING CONNECTOR  
TO MATE WITH 68 POS. HEADER BASED ON JEIDA/PCMCIA SPECIFICATION
- PACKAGING SPECIFICATION: BUS-14-333  
PACKAGING OF LEAD FREE PRODUCTS MEETS LABELING AND PACKAGING SPECIFICATION GS-14-920.
- PRODUCT SPECIFICATION: 110-263

mat'l. code				tolerances unless otherwise specified		CUSTOMER COPY	 www.fciconnect.com			
ltr	ecn no	dr	date	.X ±.3						
H	ELX-N-14762	JOHN	05/15/13	linear	.XX ±.13	projection	title			
C	v60627	RHG	4/9/96	angles	.XXX ±.051	 MM	2 x 34 POS.PCMCIA RECEPTACLE ASSEMBLY			
D	v61473	RHG	10/10/96	dr	0' ±2'		product family	PC CARD		
E	v03-1287	PJ	12/09/03	engr	D.BRANN	6/8/95	code	213		
F	v05-0791	DAI	08/22/05	chr	D.BRANN	6/8/95	size	dwg no		
G	pg06-0352	P M	08/22/06	appd	D.BRANN	6/8/95	scale	1:1		
sheet	revision	H	H				A4	95622	sheet	1 of 2
index	sheet	1	2							

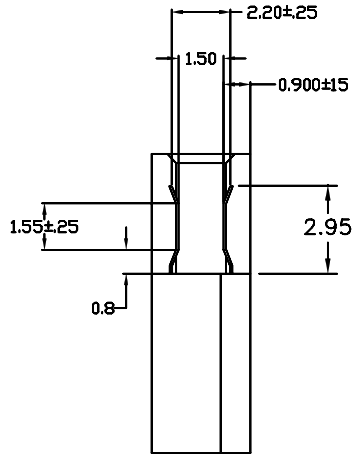
Tous droits strictement reserves. Reproduction ou communication a des tiers interdite sous quelque forme que ce soit sans autorisation ecrite du proprietaire. Propriete de c FCI. Droits de reproduction FCI.



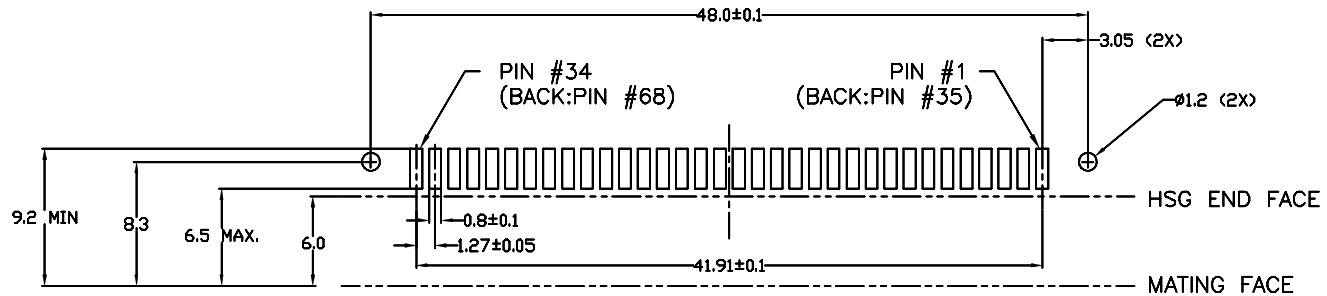
All rights strictly reserved. Reproduction or issue to third parties in any form whatever is not permitted without written authority from the proprietor. Property of FCI. Copyright FCI.

PRODUCT NO.
95622-003
95622-003LF
95622-004LF

Tous droits strictement reserves. Reproduction ou communication o des tiers interdite sous quelque forme que ce soit sans autorisation ecrite du proprietaire. Propriete de c FCI. Droits de reproduction FCI.



SECTION C-C  
SCALE 4:1



RECOMMENDED PWB FOOTPRINT LAYOUT

LEAD FREE NOTES:

1. IF LEAD FREE PART NUMBER, THE HOUSING WILL WITHSTAND EXPOSURE TO 260°C PEAK TEMPERATURE FOR 10 SECONDS IN A REFLOW SOLDER APPLICATION WITH A 1.60mm MIN THICK CIRCUIT BOARD.
2. LEAD FREE PRODUCTS MEET EUROPEAN UNION DIRECTIVES AND OTHER COUNTRY REGULATIONS AS DESCRIBED IN GS-22-008.

mat'l. code		tolerances unless otherwise specified		CUSTOMER COPY		FCI	
ltr	ecn no	dr	date	linear	.X ±.3	projection	www.fciconnect.com
H					.XX ±.13		title
					.XXX ±.051		2 x 34 POS.PCMCIA RECEPTACLE ASSEMBLY
				angles	0° ±2°		product family
				dr	R.GRAPE 10/11/96		PC CARD
				enr	D.BRANN 10/11/96	MM	213
				chr	D.BRANN 10/11/96	scale	sheet
				appd	D.BRANN 10/11/96	1:1	2 of 2
sheet index	revision						
	sheet						

All rights strictly reserved. Reproduction or issue to third parties in any form whatever is not permitted without written authority from the proprietor. Property of FCI. Copyright FCI.