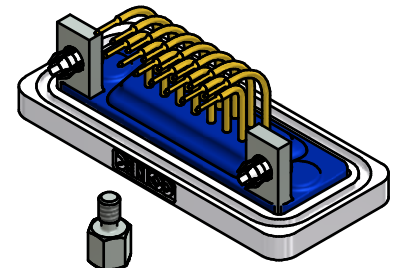
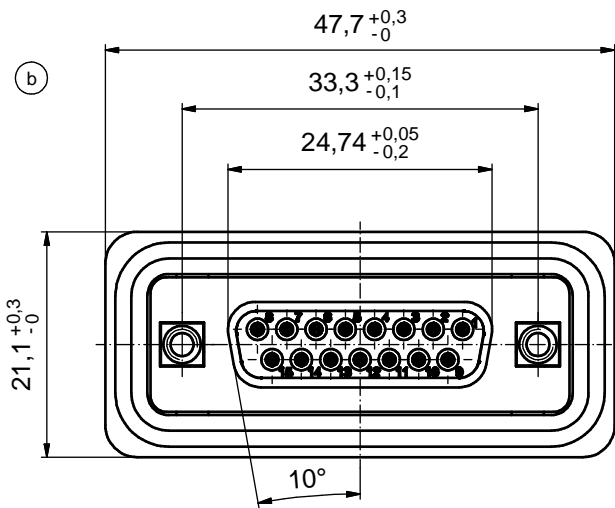
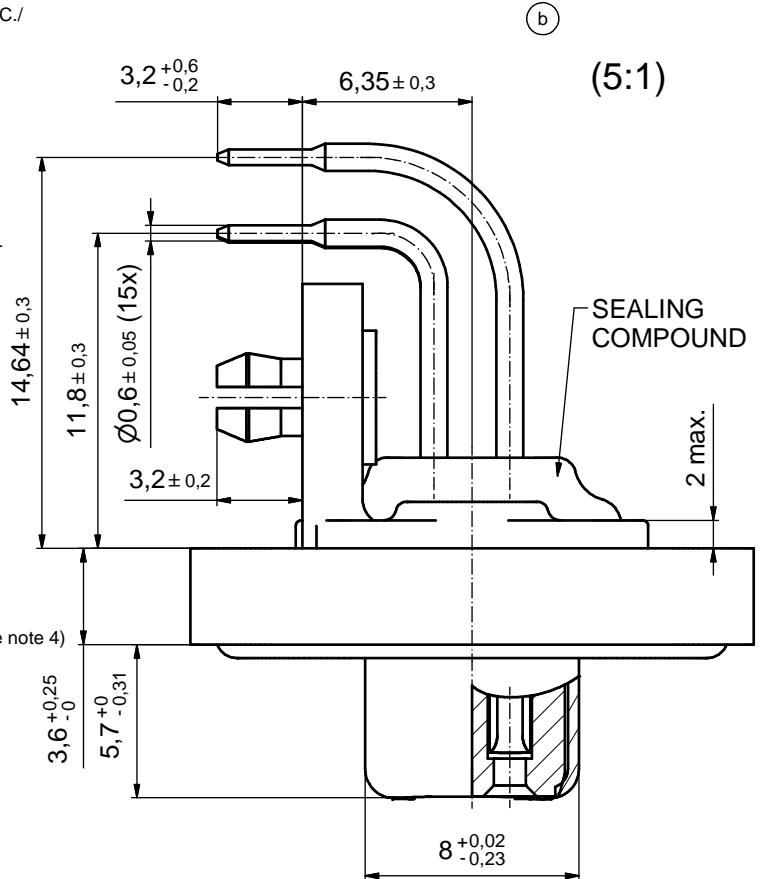
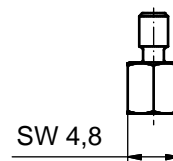
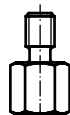
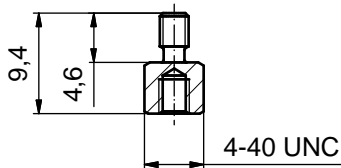
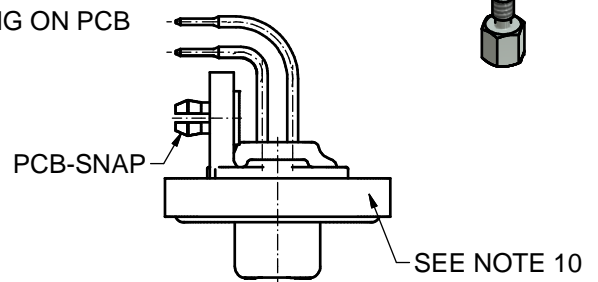
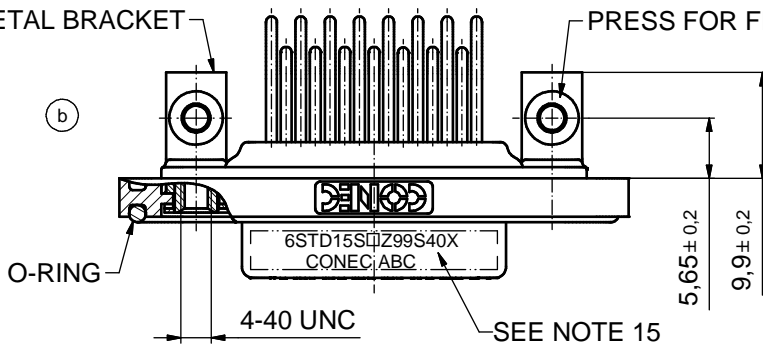


**NOTES:** (b)

1. FOR WAVESOLDERING ( SOLDER BATH TEMPERATURE 240°C FOR 5 SEC./ AND SOLDER PREHEAT 120°C FOR 120 SEC. )
2. METALSHELLS: COPPER ALLOY; min. 315µin TIN over 40-80µin NICKEL
3. INSULATORS: PBT GF UL 94 V-0, BLACK
4. CONTACTS: COPPER ALLOY; PLATING (SEE PART NO):
  - PLEASE ADD A for GOLD FLASH over NICKEL (PREFERRED TYPE)
  - PLEASE ADD B for 20µin HARD GOLD over min. 50µin NICKEL
  - PLEASE ADD C for 30µin HARD GOLD over min. 50µin NICKEL
5. THREADED INSERTS: COPPER ALLOY; min. 200µin TIN over 80µin NICKEL
6. COLLARS: COPPER ALLOY; NICKEL PLATED
7. METAL BRACKETS: ZINC DIE CAST; 300µin COPPER/ 40-120µin NICKEL/ 120-200µin TIN
8. PCB-SNAPS: COPPER ALLOY; min. 200µin TIN over 80µin NICKEL  
PCB-HOLE:  $\varnothing 3,1 \pm 0,1$ mm; PCB-THICKNESS: 1,6mm
9. HEXLOCKING SCREWS: STAINLESS STEEL
10. FRAME: ZINC DIE CAST; NICKEL PLATED
11. O-RING: SILICON; BLUE
12. SEALING COMPOUND: PUR; BLUE
13. P.C.B. HOLE DRILLINGS and RECOMMENDED PANEL CUT-OUT ON SHEET 2
14. RECOMMENDED TORQUE FOR MOUNTING SCREW  
35Ncm (3,1in.LB)/max. 40Ncm (3,5 in.LB)
15. CONNECTOR IS PART MARKED: 6STD15S□Z99S40X CONEC ABC (see note 4)



**METAL BRACKET**      **PRESS FOR FIXING ON PCB**

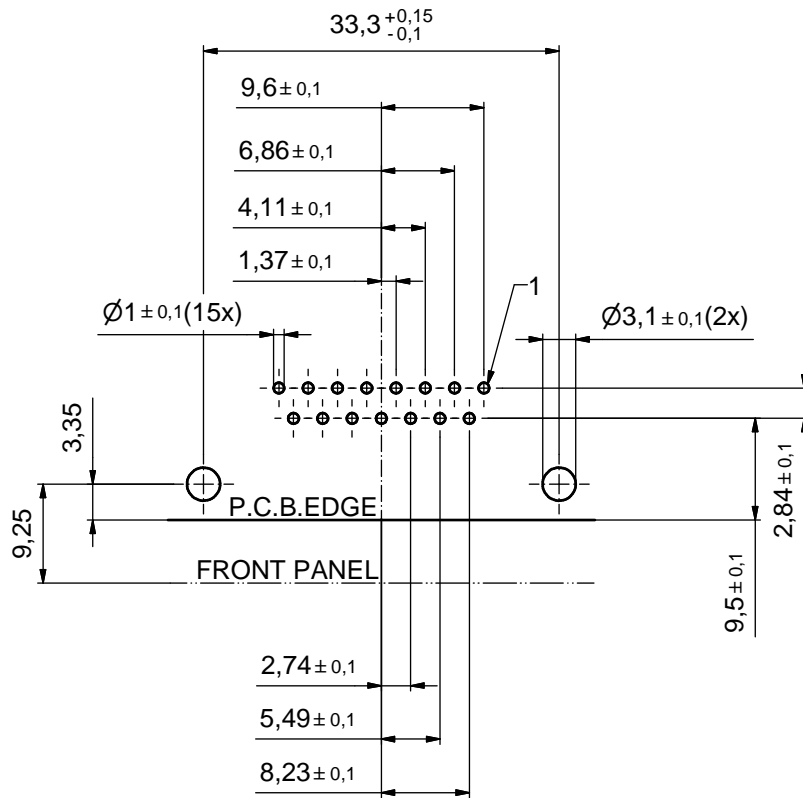


AT ALL TIMES WATER RESISTANT CONNECTORS NOT IN USE SHOULD BE COVERED WITH A CONEC WATER RESISTANT CAP OR WATER TIGHT HOOD.

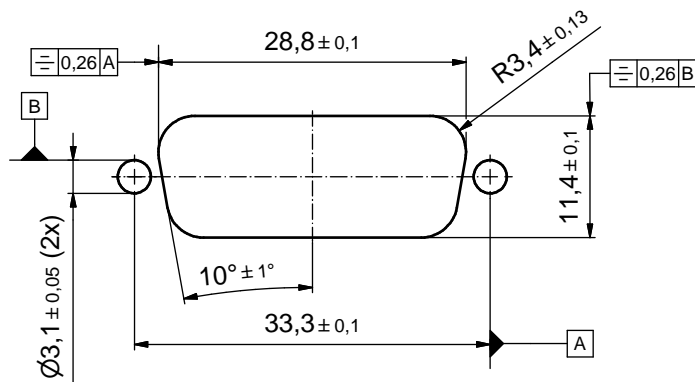
Directive 2002/95/EC RoHS compliant

THIS DRAWING MAY NOT BE COPIED OR REPRODUCED IN ANY WAY, AND MAY NOT BE PASSED ON TO A THIRD PARTY WITHOUT WRITTEN PERMISSION. OWNERSHIP AND COPYRIGHT OF CONEC GmbH DO NOT ALTER CAD DRAWING BY HAND				tolerance		scale: 2:1 (5:1)			
				dim. in mm		material: SEE NOTES			
				date	name		title: <b>D-SUB FEMALE 90°</b> 15pos. SOLDER PIN ANGLED threaded insert, metal bracket and clip		
				drawn	03.12.12 Henneboel				
				appd.	03.12.12 Koch				
				norm					
				d-old	18K1A623		dwg no:		
5 x b	A4566	03.12.2012	K.H.			15K1A1234 (b)		DIN-A3	
a	Original					part no: 6STD15S□Z99S40X (see note 4)		sh: 1/2	
rev.	description	date	name						

P.C.B. HOLE DRILLINGS  
(P.C.B. TOP SIDE)



RECOMMENDED PANEL CUT-OUT (b)



THIS DRAWING MAY NOT BE COPIED OR REPRODUCED IN ANY WAY, AND MAY NOT BE PASSED ON TO A THIRD PARTY WITHOUT WRITTEN PERMISSION. OWNERSHIP AND COPYRIGHT OF CONEC GmbH DO NOT ALTER CAD DRAWING BY HAND				tolerance		scale: 2:1
				dim. in mm		material: SEE Sheet1
				date	name	title: P.C.B. HOLE DRILLINGS D-SUB FEMALE 90° 15pos. threaded insert, metal bracket and clip
				drawn	03.12.12 Henneboel	
				appd.	03.12.12 Koch	
				norm		dwg no: 15K1A1234
				d-old	18K1A623	
1 x b	A4566	03.12.2012	K.H.			DIN-A3
a	Original					sh: 2/2
rev.	description	date	name	part no: SEE SHEET 1		