

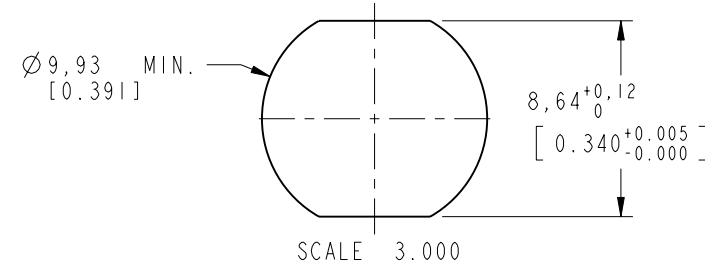
NOTES:

1. MATERIALS AND FINISHES:  
 BODY, HEX NUT - BRASS, NICKEL PLATING  
 CONTACT - BERYLLIUM COPPER, SILVER PLATING  
 CONTACT - BRASS, SILVER PLATING  
 INSULATOR - PTFE  
 LOCK WASHER - PHOSPHOR BRONZE, NICKEL PLATING
2. ELECTRICAL:  
 A. IMPEDANCE: 50 OHM  
 B. DIELECTRIC WITHSTANDING VOLTAGE: 1500 VRMS, MAX.
3. MECHANICAL:  
 A. DURABILITY: 500 CYCLES MIN.  
 B. TEMPERATURE RANGE: -65° C TO +165° C
4. PACKAGING:  
 A. QUANTITY: SINGLE PACK  
 B. MARKING: BAG TO BE MARKED  
 "AMPHENOL RF, 31-239, AND DATE CODE"
5. MAX. PANEL THICKNESS=5.94mm

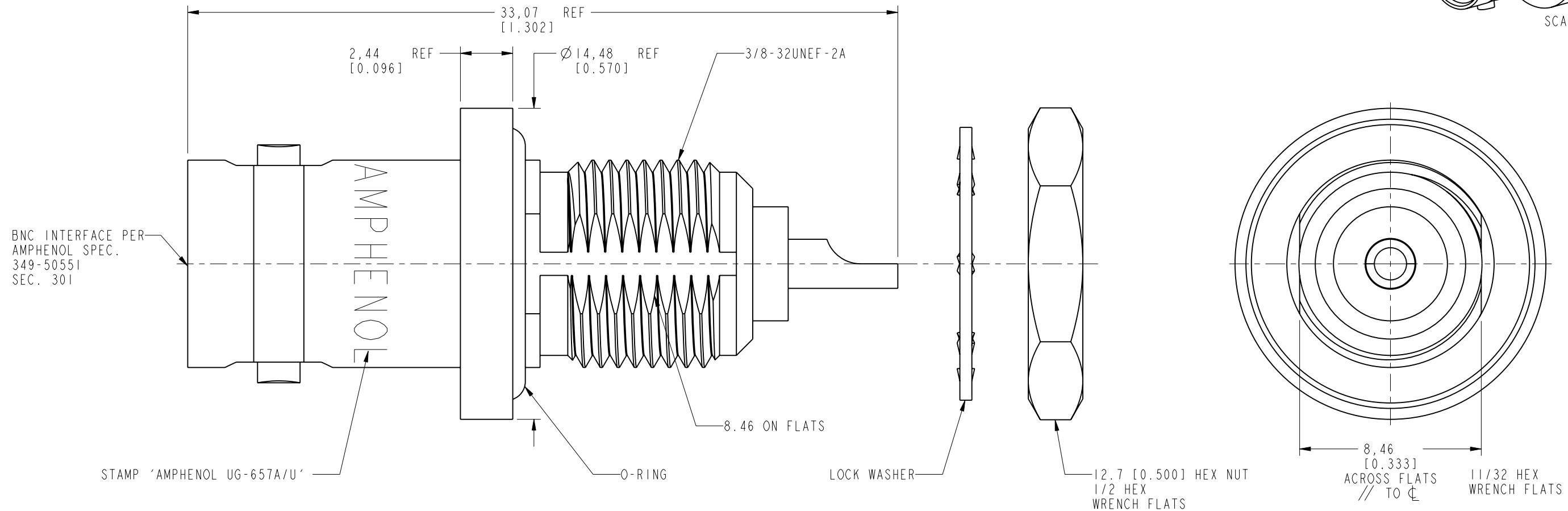
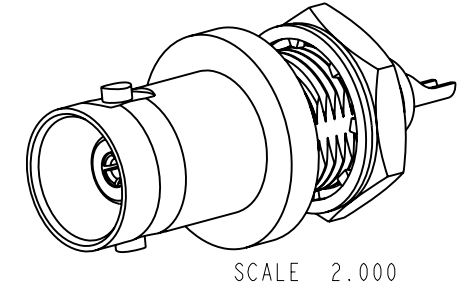
THIRD ANGLE PROJ.

REVISIONS

REV	DESCRIPTION	DATE	ECO	APPR
	RELEASE TO MFG.			
M	ADDED COD; STAMP "AMPHENOL" WAS "74868" \RD-DMI2092001R3	19-Oct-12	49078	SH



**MOUNTING HOLE DETAIL**  
**0.234 MAX. PANEL THICKNESS**



VIEW DOES NOT SHOW  
 HEX NUT, LOCKWASHER AND O-RING

**CUSTOMER OUTLINE DRAWING**  
 ALL OTHER SHEETS ARE FOR INTERNAL USE ONLY

UNLESS OTHERWISE SPECIFIED, DIMENSIONS ARE IN METRIC AND TOLERANCES ARE: <0.5mm ±0.05mm    0.5 - 6mm ±0.1mm    6 - 30mm ±0.2mm    30 - 120mm ±0.3mm    ANGLES ±1°	MATERIAL	DRAWN R. MAO	DATE 20-Jul-12	TITLE BNC TYPE PANEL RECEPTACLE NICKEL PLATED UG 657A/U SCALE: 5.0:1.0    SHEET 2 OF 2 DWG SIZE B    REV M	Amphenol RF www.amphenolrf.com
	NOTICE - These drawings, specifications, or other data (1) are, and remain the property of Amphenol corp. (2) must be returned upon request; and (3) are confidential and not to be disclosed to any person other than those to whom they are given by Amphenol Corp. the furnishing of these drawings, specifications, or other data by Amphenol Corp., or to any other person to anyone for any purpose is not to be regarded by implication or otherwise in any manner licensing, granting rights to permitting such holder or any other person to manufacture, use or sell any product, process or design, patented or otherwise, that may in any way be related to or disclosed by said drawings, specifications, or other data.	REFERENCE EAR # AND CONFIGURATION LEVEL: <input type="checkbox"/> <input type="checkbox"/> <input type="checkbox"/>	ENGINEER D. ROYCE DATE 1/19/91		
FINISH					