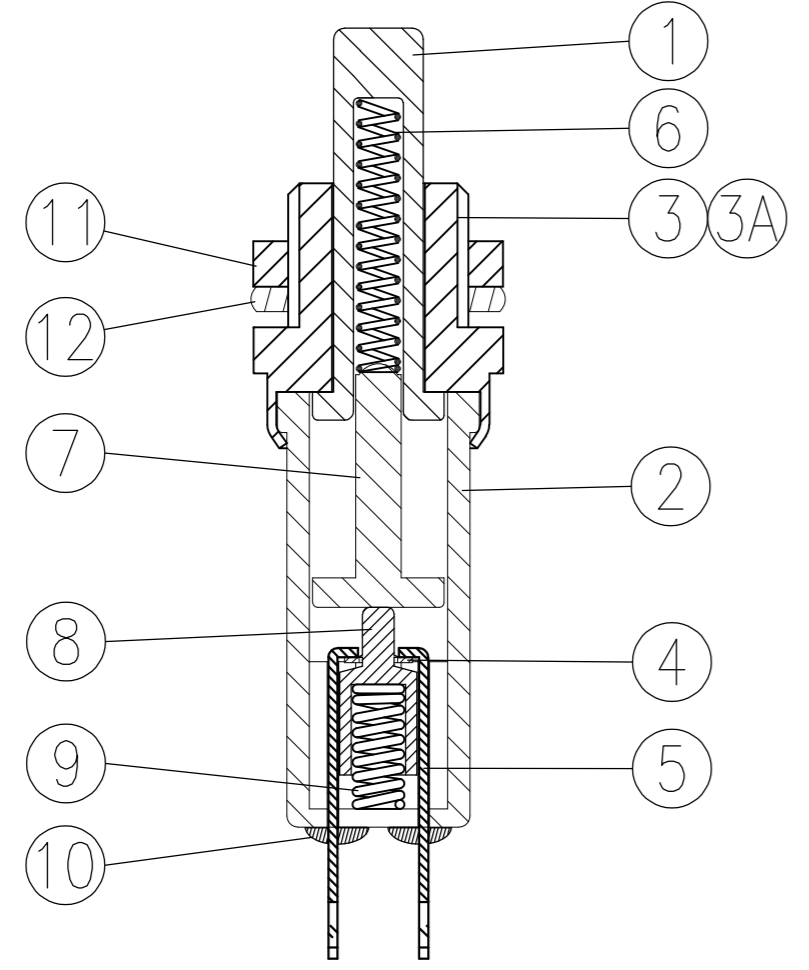


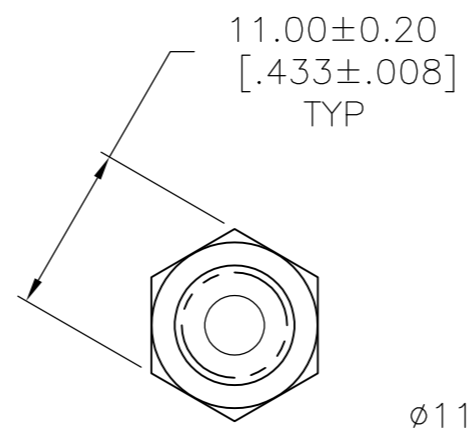
THIS DRAWING IS UNPUBLISHED. RELEASED FOR PUBLICATION
 © COPYRIGHT - By - ALL RIGHTS RESERVED.

| LOC | | DIST | | REVISIONS | | | |
|-----|-----|---------------------------|--|-----------|-----|------|--|
| P | LTR | DESCRIPTION | | DATE | DWN | APVD | |
| B | | REVISED PER ECO-14-015934 | | 27OCT2014 | NK | RH | |

- 1 RATING: 1-3A 12VDC
 CIRCUIT TYPE: 2P SPST N.C., ON-(OFF), PUSH TO SWITCH OFF
 PLUNGER FULL TRAVEL: 7.80 ± 0.30 [$.307 \pm 0.012$], PLUNGER (ITEM#1) MUST TRAVEL BELOW THE TOP SURFACE OF THE THREADED BUSHING (ITEM#3)
- 2 ALL MATERIALS ARE ROHS COMPLIANT PER TE SPEC 230-702.
- 3 RECOMMENDED MOUNTING HOLE DIA.: $\varnothing 8.00 \pm 0.20$ [$\varnothing .315 \pm 0.008$], THICKNESS: 1.00-2.70 [.039-.106],
- 4 SWITCHES ARE SUPPLIED WITH MOUNTING HARDWARE.
- 5 TORQUE FOR MOUNTING HARDWARE 7 INCH POUNDS MAX.

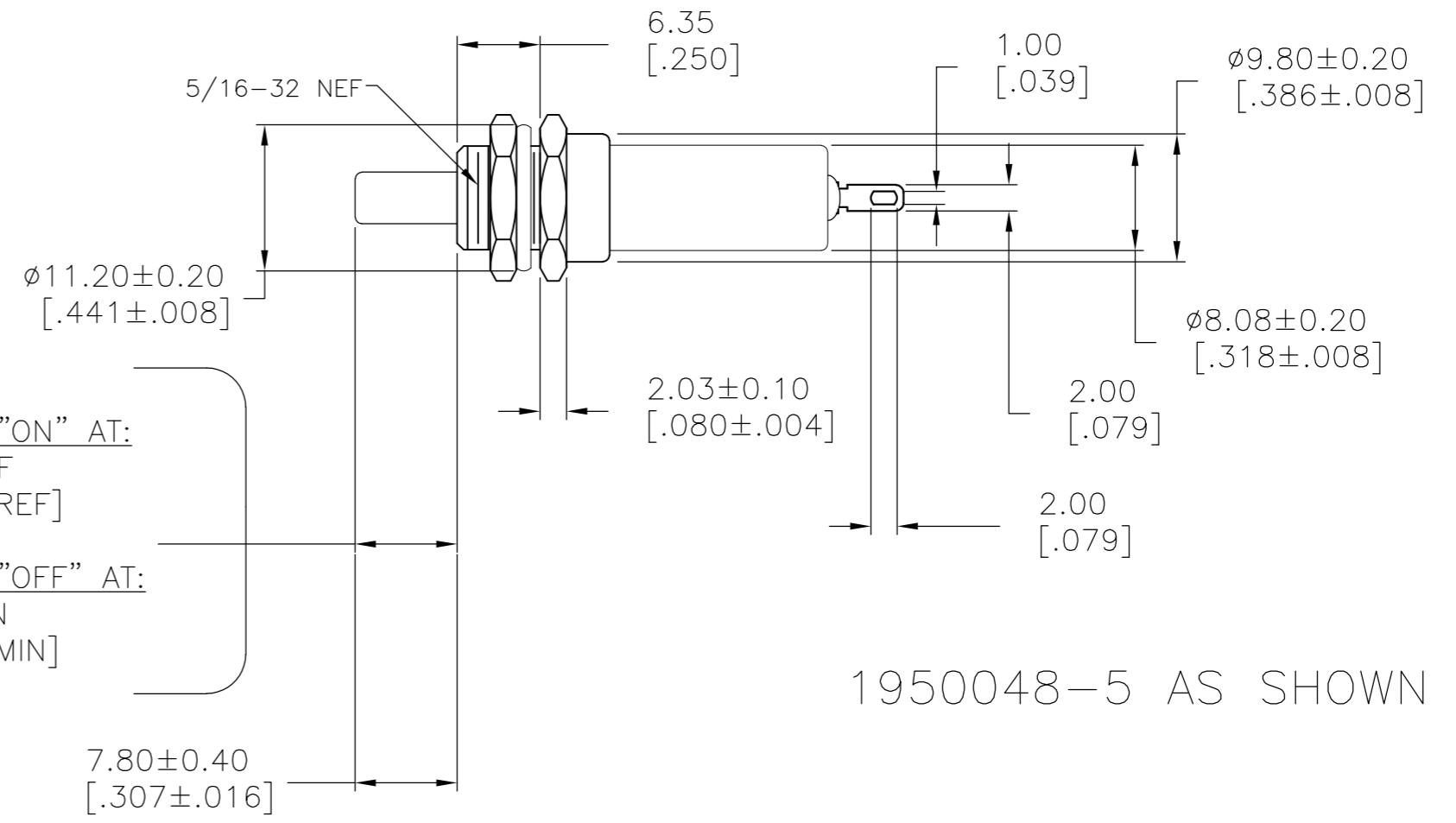
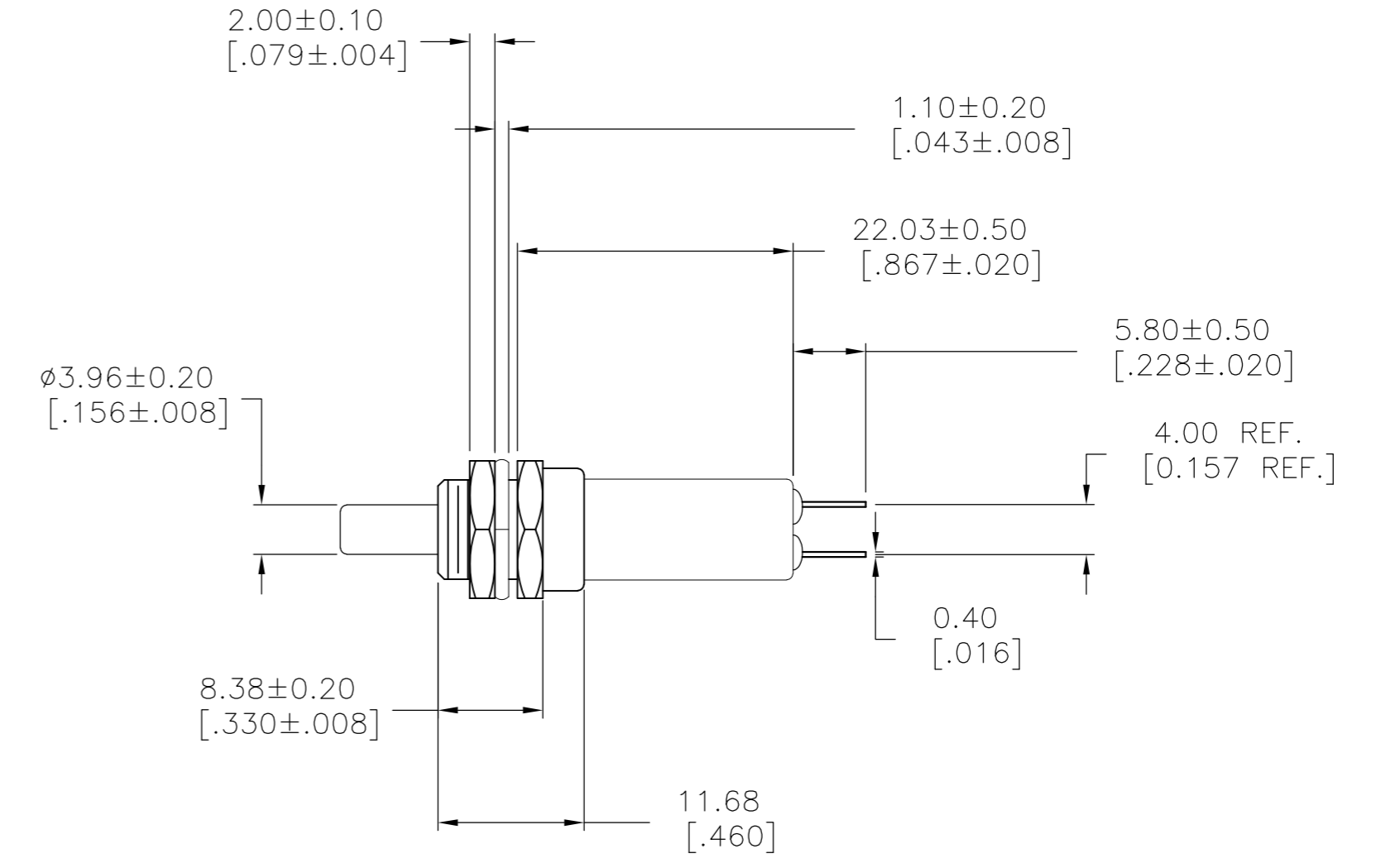


| No. | Item name | Base material | Plating |
|-----|------------------------|----------------------|---------------|
| 1 | Plunger | PA66, UL94-V2, White | None |
| 2 | Frame | PBT, UL94-V2, Black | None |
| 3 | Bushing (5/16-32NEF) | Copper Alloy | Nickel Plated |
| 3A | Bushing (5/16-32NEF) | Zinc | Nickel Plated |
| 4 | Contact (Moving) | Copper Alloy | Silver Plated |
| 5 | Terminal (Fixed) Qty:2 | Copper Alloy | Silver Plated |
| 6 | Spring (Plunger) | Stainless Steel | None |
| 7 | Insulator | PA6/66, UL94 V0 | None |
| 8 | Actuator | PBT, UL94-V2 | None |
| 9 | Spring (Actuator) | Stainless Steel | None |
| 10 | Sealant | Epoxy, Blue | None |
| 11 | HEX NUT (5/16-32NEF) | BRASS (JISC36002BE) | Nickel Plated |
| 12 | LOCK WASHER ON | STEEL (SWC) | Nickel Plated |



1 SWITCH "ON" AT:
 7.80 REF
 [.307 REF]

SWITCH "OFF" AT:
 6.20 MIN
 [.244 MIN]



1950048-5 AS SHOWN

| TEST OR EXAMINATION | REQUIREMENT | TEST STANDARD | Test Group | | | | | |
|--------------------------------------|---------------------------------------------|-----------------------------------------------------------------------------------|------------|-----|---|---|---|---|
| | | | 1 | 2 | 3 | 4 | 5 | 6 |
| Initial Examination of Product | Meets drawing requirements | Drawing | 1 | 1 | 1 | 1 | 1 | 1 |
| Initial Termination Resistance | 50 milliohms max. | EIA 364-23B | 2 | 2 | | | | |
| Insulation Resistance | 100 megohms min. | EIA 364-21C | | | | 2 | | |
| Dielectric Withstanding Voltage | 1,000 VAC | EIA 364-20B, Condition 1 | 6 | | | 3 | | |
| Electrical Overload Cycling | 50 cycles at 4.5A, 12VDC | EIA RS 448, Method 7 | 3 | | | | | |
| Electrical Endurance Cycling | 6,000 cycles at 3A, 12VDC | EIA RS 448, Method 8 | 4 | | | | | |
| Temperature Rise vs Current | 30°C max temperature rise from ambient | EIA RS 448, Method 6 | 5 | | | | | |
| Mechanical Endurance Cycling | 10,000 cycles, No physical damage | EIA RS 448, Method 9 | | 5 | | | | |
| Plunger Travel | "NOTE 1" (Switch OFF at 6.20mm min) | Verify ON / OFF operating range. | | 3 | | | | |
| Actuation Force | 800-1100 grams | "NOTE 1" (Switch OFF at 6.20mm min.) Measure force with Plunger at Full Travel | | 4,6 | | | | |
| Low Temperature Cycling | 10,000 cycles. No physical damage | EIA 448, Method 10, 10,000 cycles at -20C | | | | | 2 | |
| High Temperature Cycling | 10,000 cycles. No physical damage | EIA 448, Method 10, 10,000 cycles at +65C | | | | | | 2 |
| Termination Solderability | Pass/fail per EIA 364-52 (95% min coverage) | EIA 364-52, Class 2, Category 1 | | | 2 | | | |
| Resistance to Solder Heat (terminal) | No physical damage | EIA 364-56A, procedure 2 | | | | 4 | | |
| Final Examination of Product | Meets drawing requirements | Drawing | 7 | 7 | 3 | 5 | 3 | 3 |

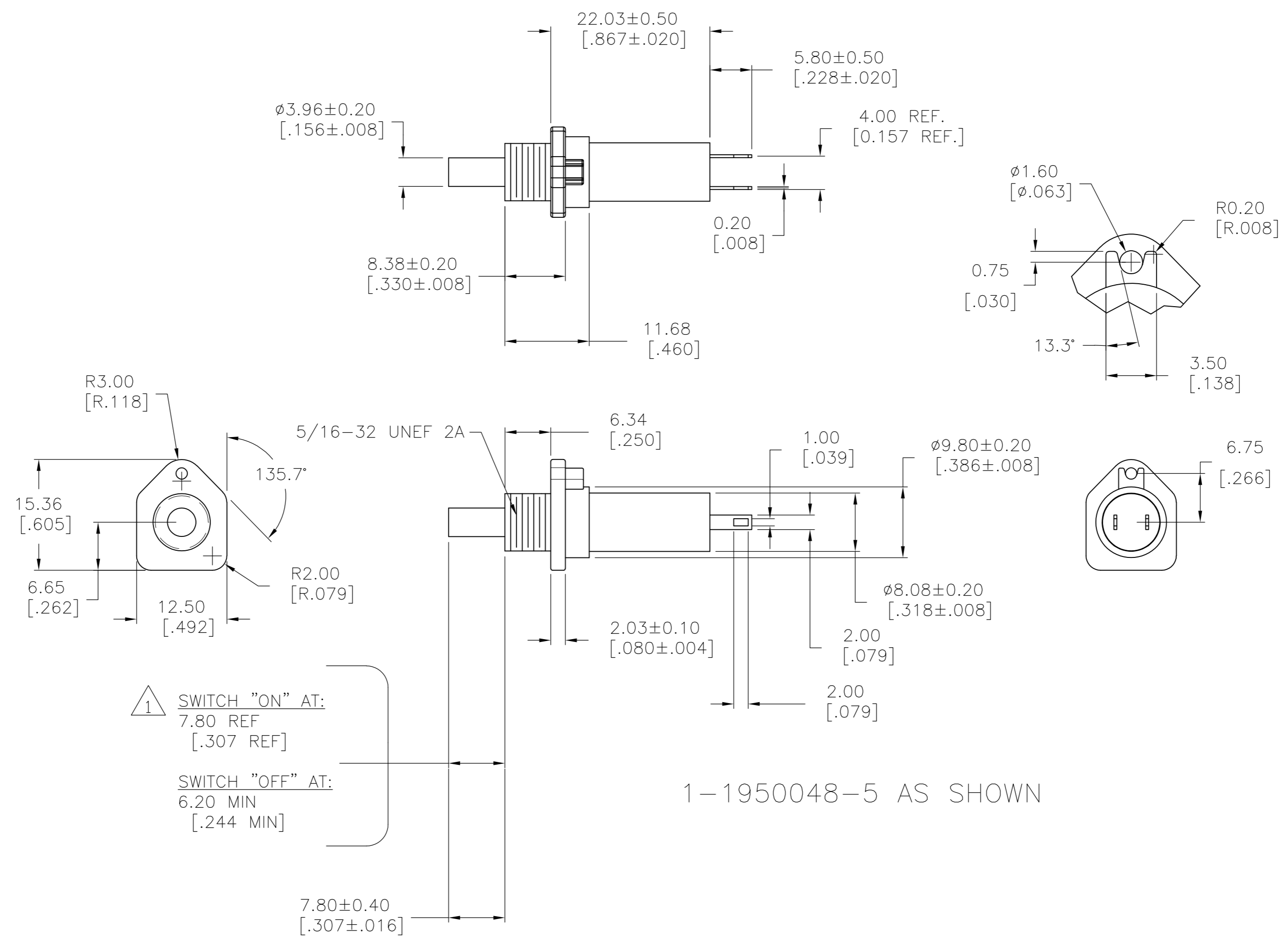
** 6 Samples required for each group.

| | | |
|-------------------------|-------------------------------------|-------------|
| SUPERSEDED BY 1950048-5 | 3A | 1-1950048-5 |
| | 3 | 1950048-5 |
| | BUSHING TYPE "SEE BILL OF MATERIAL" | PART NUMBER |

| | | | | | |
|----------------------------------------|--|------------------|-----------|----------------------------|--|
| THIS DRAWING IS A CONTROLLED DOCUMENT. | | DWN S. GOOD | 21SEP2006 | TE Connectivity | |
| DIMENSIONS: mm [INCHES] | | CHK - | APVD - | NAME | |
| TOLERANCES UNLESS OTHERWISE SPECIFIED: | | PRODUCT SPEC | | EXTENDED TRAVEL PUSHBUTTON | |
| 0 PLC ± - | | APPLICATION SPEC | | SEE DWG | |
| 1 PLC ± - | | SIZE | | CAGE CODE | |
| 2 PLC ± 0.25[.010] | | A2 | | 00779 | |
| 3 PLC ± - | | DRAWING NO | | C=1950048 | |
| 4 PLC ± - | | RESTRICTED TO | | - | |
| ANGLES ± 1 | | SCALE | | 2:1 | |
| MATERIAL SEE DWG 2 | | WEIGHT | | SHEET 1 of 2 | |
| FINISH SEE DWG 2 | | CUSTOMER DRAWING | | REV B | |

THIS DRAWING IS UNPUBLISHED. RELEASED FOR PUBLICATION
 © COPYRIGHT - By - ALL RIGHTS RESERVED.

| LOC | | DIST | | REVISIONS | | | |
|-----|-----|-------------|------|-----------|------|--|--|
| P | LTR | DESCRIPTION | DATE | DWN | APVD | | |
| - | - | SEE SHEET 1 | - | - | - | | |



| | | | | | |
|----------------------------------------|--|-------------------------|-----------|----------------------------|--------------------|
| THIS DRAWING IS A CONTROLLED DOCUMENT. | | DWN S. GOOD | 21SEP2006 | STE TE Connectivity | |
| DIMENSIONS: mm [INCHES] | | CHK - | APVD - | | |
| TOLERANCES UNLESS OTHERWISE SPECIFIED: | | PRODUCT SPEC SEE DWG | | EXTENDED TRAVEL PUSHBUTTON | |
| 0 PLC ± - | | APPLICATION SPEC | | SIZE A2 | CAGE CODE 00779 |
| 1 PLC ± - | | WEIGHT - | | DRAWING NO C=1950048 | RESTRICTED TO - |
| 2 PLC ± 0.25[010] | | CUSTOMER DRAWING | | SCALE 2:1 | SHEET 2 OF 2 |
| 3 PLC ± - | | | | REV B | |
| 4 PLC ± - | | | | | |
| ANGLES ± 1 | | | | | |
| FINISH SEE DWG | | | | | |