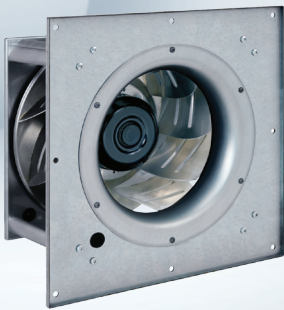


EC centrifugal fans

backward curved, single inlet, Ø 500



Highlights:

- 9-blade fan, 3-phase fan motor
- Output: 10 VDC, max.10 mA, 20 VDC, max. 50 mA, slave 0-10 V
- Input: sensor 0-10 V or 4-20 mA, 24 V external programming, 0-10 VDC/ PWM control
- Integrated PID controller along with RS485 MODBUS RTU technology
- Over-temperature protected electronics / motor
- Soft start, alarm relay, motor current limit, PFC passive, line undervoltage / phase failure detection
- Control interface with SELV potential safely disconnected from the mains

Material: Impeller: Aluminum sheet
 Rotor: Coated in black
 Electronic housing: Die-cast aluminum
 Assembly: Galvanized steel with aluminum posts

Mounting position: Shaft horizontal or rotor on bottom; rotor on top on request

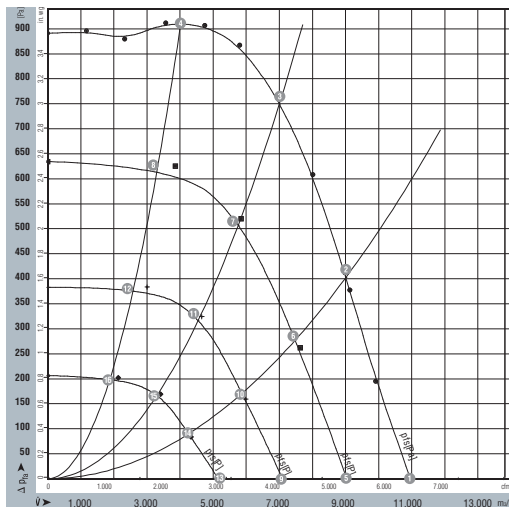
Condensate discharge holes: Rotor-side

Nominal Data

Type	RadiPac	Motor	Air flow		Nominal voltage range	Frequency	Power input (1)	Speed (1)	Current draw (1)	Temperature range (1)	Mass	Ingress protection rating	Electrical wiring diagram	UL
			CFM	VAC	Hz	Watts	RPM	A	°C	lbs				
R3G500-AG34-63F	EG1R-240-500-30	M3G150-FF	6,450	200...240	50/60	2,700	1,700	7.8	-25...55	50	IP54	A	Yes	
R3G500-AG25-64F	EG1R-480-500-30	M3G150-FF	6,450	380...480	50/60	2,500	1,700	3.3	-25...60	50	IP54	A	Yes	

(1) Nominal data at maximum load.

Curves



Measurement: LU-134784
 Measurement: LU-116713
 Measurement: LU-118204
 Measurement: LU-118205
 Measurement: LU-118206

Air performance measured as per: ISO 5801, Installation category A, without protection against accidental contact.

Suction-side noise levels: LwA as per ISO 13347, LpA measured at 1m distance to fan axis.

The values given are valid under the measuring conditions mentioned and may vary according to the actual installation situation.

With any deviation to the standard set-up, the specific values have to be checked and reviewed once installed or fitted.

For detailed information on the measuring set-up, please contact ebm-papst.

	n rpm	Pe W	I A (460V)	I A (230V)	LwAin dB(A)
1	1700	1909	2.4	5.7	91
2	1700	2329	3.0	6.9	86
3	1700	2700	3.3	7.2	82
4	1700	2382	2.7	7.0	81
5	1400	1065	1.3	3.2	87
6	1400	1294	1.6	3.8	82
7	1400	1436	1.8	4.2	78
8	1400	1323	1.4	3.9	77
9	1100	516	0.7	1.5	82
10	1100	628	0.9	1.8	77
11	1100	697	0.9	2.0	73
12	1100	642	0.8	1.9	72
13	800	199	0.4	0.6	75
14	800	241	0.5	0.7	70
15	800	268	0.5	0.8	66
16	800	247	0.5	0.7	65

