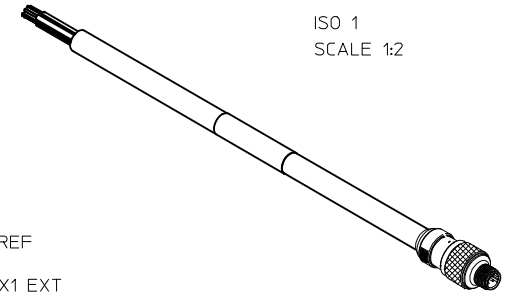
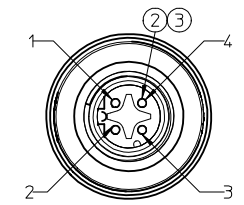
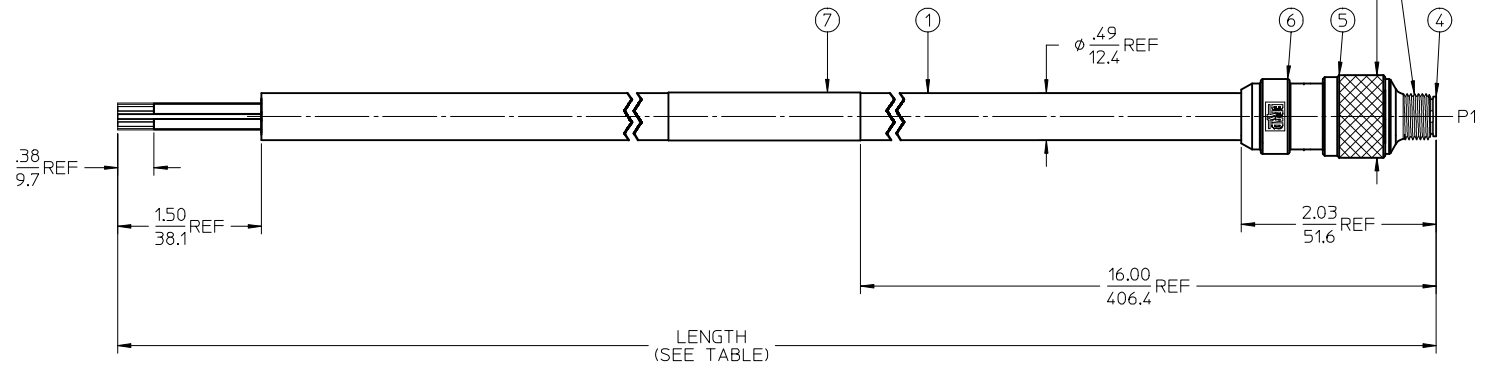


MATERIAL NO.	ENGINEERING NO.	LENGTH
1303040003	1303040003	1.0M +55.6mm -0 [3.28' +2.19' -0]
1303040004	1303040004	2.0M +88.9mm -0 [6.56' +3.50' -0]
1303040005	1303040005	3.0M +88.9mm -0 [9.84' +3.50' -0]
1303040006	1303040006	4.0M +165.1mm -0 [13.12' +6.50' -0]
1303040007	1303040007	5.0M +165.1mm -0 [16.40' +6.50' -0]
1303040009	1303040009	7.0M +165.1mm -0 [22.96' +6.50' -0]
1303040012	1303040012	10.0M +317.5mm -0 [32.81' +12.50' -0]
1303040015	1303040015	25.0M +622.3mm -0 [82.0' +24.50' -0]
1303040021	1303040021	1.5M +55.6mm -0 [4.92' +2.19'-0]
1303040022	1303040022	2.5M +88.9mm -0 [8.20' +3.50' -0]

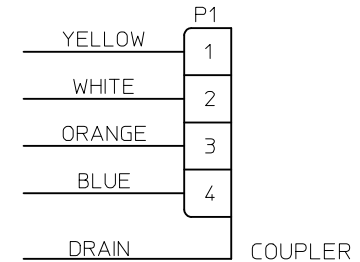


ISO 1
SCALE 1:2



MALE FACE VIEW
SCALE 2:1

- NOTES:
1. COMPLIES WITH SAE J2839
 2. ASSEMBLY IS FULLY SHIELDED
 3. ELECTRICAL RATINGS:
VOLTAGE 125V
CURRENT: 1.5AMPS MAX
 4. COUPLING NUT TORQUE: HAND TIGHT
 5. MATERIALS: SEE TABLE
 6. FINISHES: SEE TABLE
 7. ASSEMBLY IS RoHS COMPLIANT



WIRING DIAGRAM
(SEE NOTE 2)

ITEM	QTY	DESCRIPTION	MATERIAL	FINISH
7	1	LABEL	VINYL	YELLOW/BLACK
6	1	OVERMOLD	PBT	GRAY
5	1	MALE COUPLING NUT, M12	STAINLESS STEEL	PASSIVATED
4	1	MALE HOUSING, D-CODE	ZINC DIE-CAST	CHROME
3	1	MALE INSULATOR, 4C	PBT	BLACK
2	4	MALE CONTACT PIN, 18AWG	Cu ALLOY	GOLD PLATED
1	1	CABLE, 18AWG, 4/C, SHIELDED	XRAD XLE JACKET	SEE WIRE DIAGRAM

ADD P/N 1303040009	2016/11/02
EC NO: IPG2017-0436	2016/11/02
DR: DRWINRSTONE	
CHKD: CHKD: BWOODMAN	
APPR: BWOODMAN	2016/11/10

QUALITY SYMBOLS	GENERAL TOLERANCES (UNLESS SPECIFIED)
▽=0	4 PLACES ± --- ± ---
▽=0	3 PLACES ± --- ± .005
	2 PLACES ± 0.13 ± .010
	1 PLACE ± 0.25 ± .020
	0 PLACE ± --- ± ---
	ANGULAR ±1/1°
	DRAFT WHERE APPLICABLE MUST REMAIN WITHIN DIMENSIONS

DRAWN BY LHARTMANN	DATE 2011/01/17
CHECKED BY VOU	DATE 2010/02/22
APPROVED BY JFMURPHY	DATE 2014/10/10
SEE CHART	

DIMENSION STYLE IN/MM	SCALE 1:1	DESIGN UNITS INCH	THIRD ANGLE PROJECTION
TITLE M12 HD 100LB PORTABLE 4P M/MP ST E-NET #18/4 BLACK XLPE CBL		DOCUMENT NO. SD-130304-001	
SHEET NO. 1 OF 1		THIS DRAWING CONTAINS INFORMATION THAT IS PROPRIETARY TO MOLEX INCORPORATED AND SHOULD NOT BE USED WITHOUT WRITTEN PERMISSION	