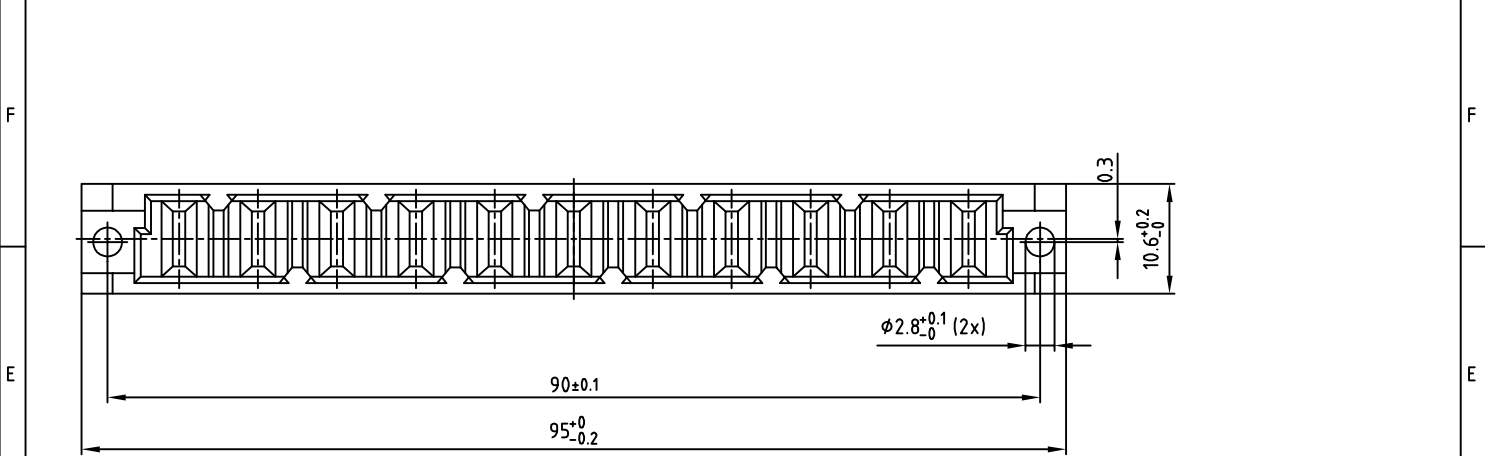
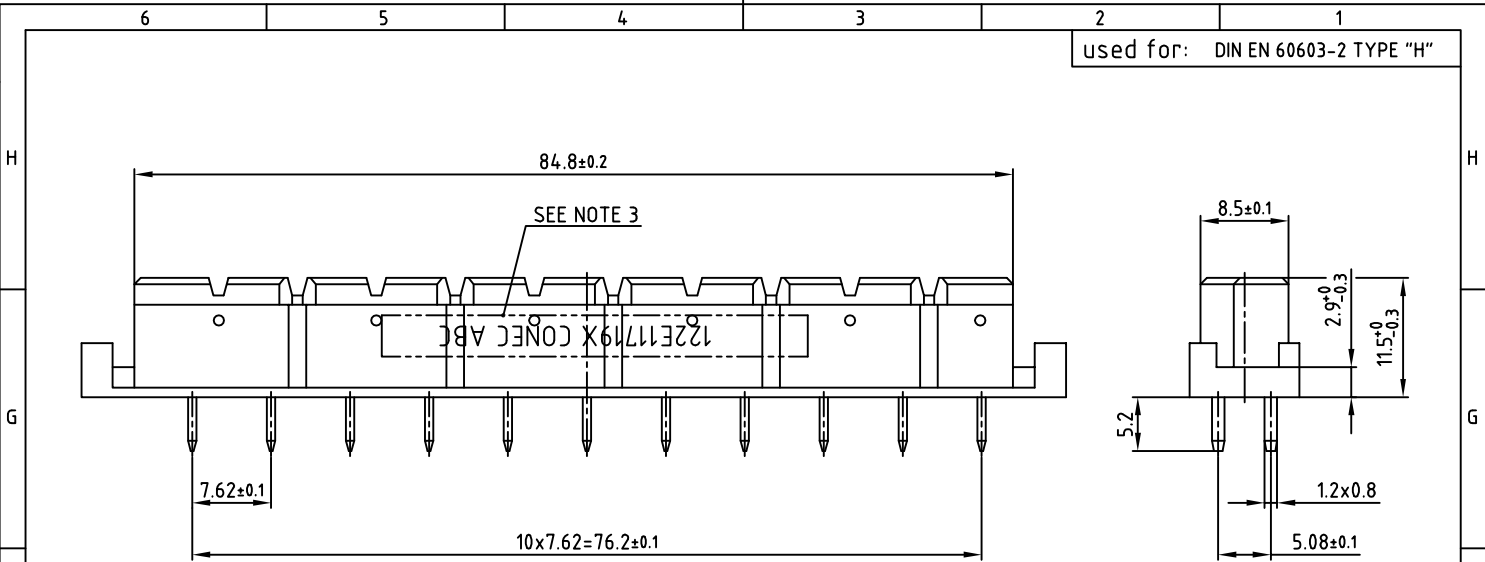


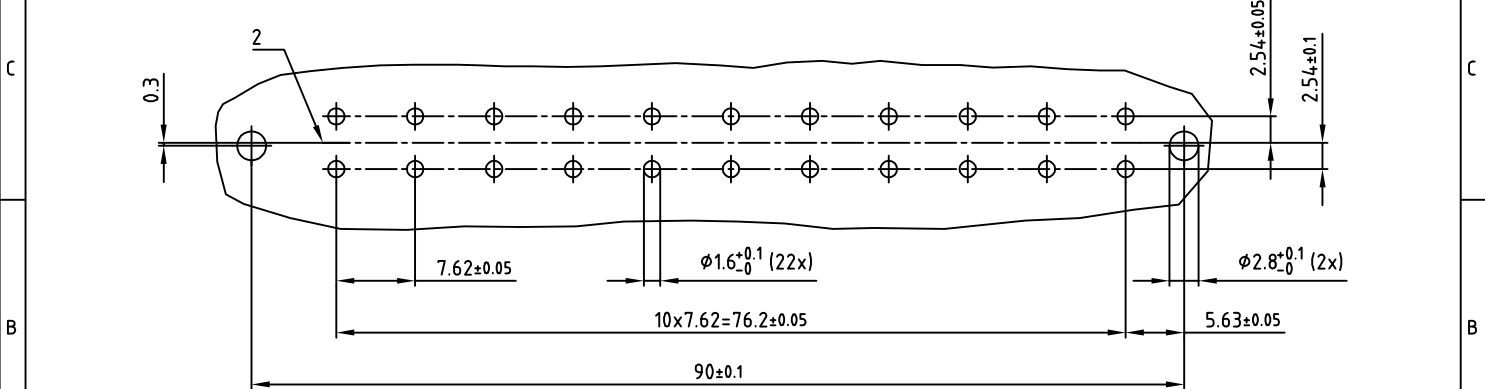
used for: DIN EN 60603-2 TYPE "H"



NOTES:

1. INSULATORS: PC GF UL 94 V-1, GREY
2. CONTACTS: COPPER ALLOY
PLATING: SILVER
500 MATING CYCLES
3. CONNECTOR IS PART MARKED: 122E11719X CONEC ABC

P.C.B. HOLE DRILLINGS



THIS DRAWING MAY NOT BE COPIED OR REPRODUCED IN ANY WAY, AND MAY NOT BE PASSED ON TO A THIRD PARTY, WITHOUT WRITTEN PERMISSION. OWNERSHIP AND COPYRIGHT OF CONEC Gmbh DO NOT ALTER CAD DRAWING BY HAND	tolerance			 dim. in mm	scale:	2:1
					material:	SEE NOTES
					title:	FEMALE CONNECTOR TYPE "H" 11pos. FASTON and 22pos. SOLDER PIN STRAIGHT with coding
					dwg no:	12K1A786
					part no:	122E11719X
Directive 2002/95/EC RoHS compliant			rev. description date name		DIN-A 3 sh: 1/1	