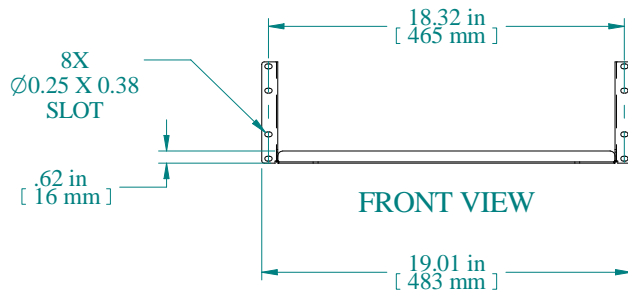
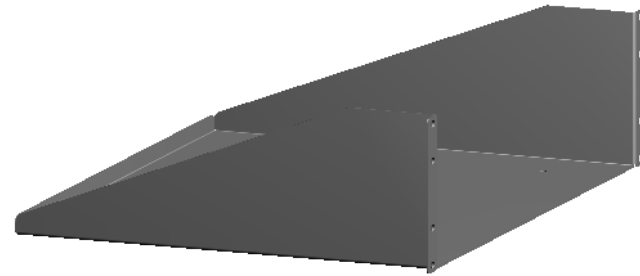
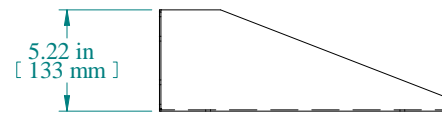


TOP VIEW



FRONT VIEW



SIDE VIEW

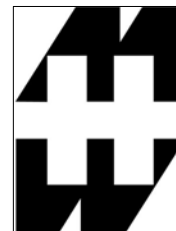
PART NUMBERS

RASU190515BK1	PAINTED BLACK TEXTURED
RASU190515CG1	PAINTED CONT. GRAY TEXTURED

NOTES

Maximum Weight 200 lb  
Mounting Hardware not Supplied with Shelf

Data subject to change without notice. Isometric drawing not to scale.



**HAMMOND  
MANUFACTURING™**

[www.hammondmfg.com](http://www.hammondmfg.com)

PART NO. RASU190515