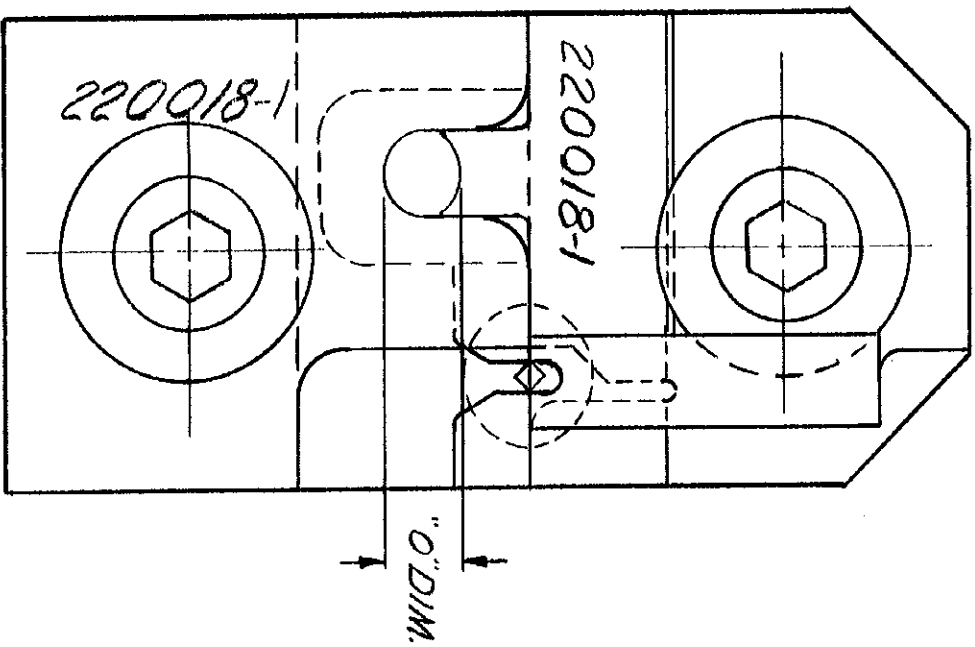
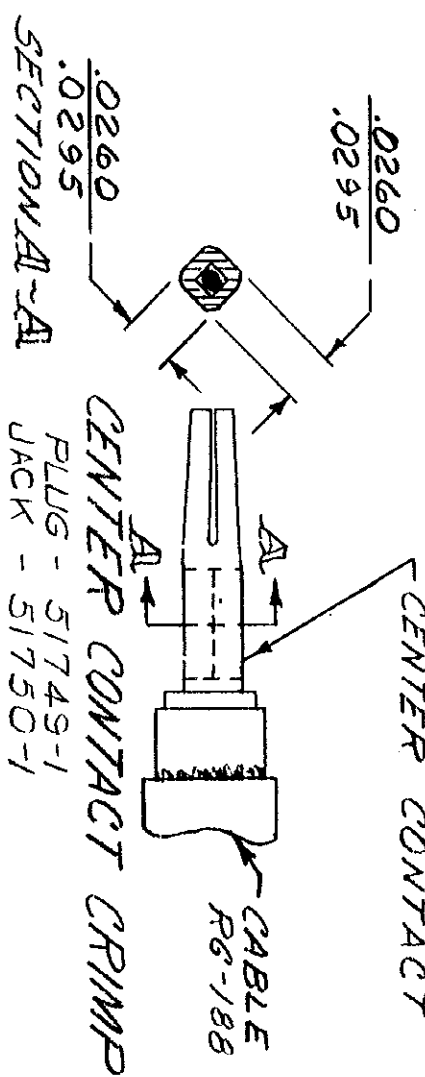
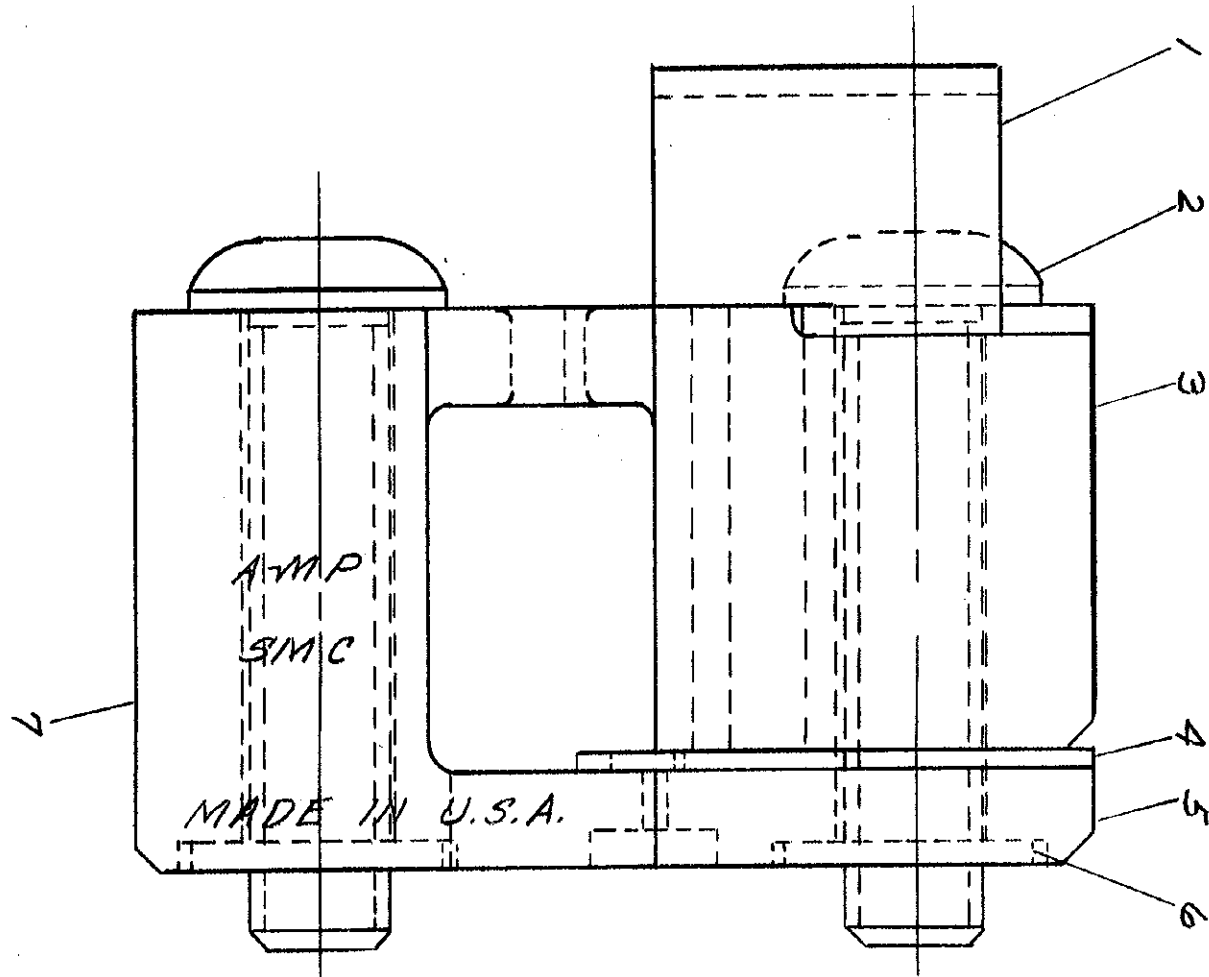


5

DIMENSIONS IN INCHES. DO NOT SCALE PRINT



.0260	DIM
.0295	NO 60
.109	.117



THE CRIMP DIMS. APPLY ONLY TO THE ABOVE COMBINATIONS ON A CRIMPED PRODUCT  
 PLUG GAGE DIMENSIONS APPLY WHEN TOOL IS BOTTOMED BUT NOT UNDER PRESSURE.

METHOD OF GAGING CRIMP DIMS.

1	307219-1	INDENTER	7
2	1-21046-3	RING RETAINING	6
1	307221-1	CENTER CONTACT CRIMP	5
1	307222-1	LOCATOR	4
1	307220-1	ANVIL BRAID	3
2	306105-7	SCREW	2
1	307223-1	GUIDE	1

REQUIRED PER ASSEMBLY	DESCRIPTION	NUMBER
	220018-1	1

DR: *[Signature]* 4-17-69  
 DE: *[Signature]* 4-17-69  
 REL: *[Signature]* 4-23-69

WIRE - RANGE - INSULATION: RG-188  
 TOLERANCE EXCEPT SCALE: ± .015  
 NAME: DIE ASSEMBLY

AMP PRODUCTS COVERED BY PATENTS AND/OR PATENTS PENDING.  
 ©1969 BY AMP INCORPORATED. ALL RIGHTS RESERVED.  
 AMP INCORPORATED, HARRISBURG, PENNA.

PRINT DIST  
 AMP 253 REV 7/60 B

6 7 6 5 4 3 2 1