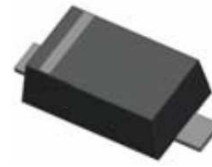


Small Signal Product
SOD-523F $I_{FSM}=4A$ 30V/200mA Schottky Diode
FEATURES

- Low Forward Voltage Drop
- Fast Switching Time
- Surface Mounted Device
- Moisture sensitivity level 1
- Pb free and RoHS compliant
- Halogen-free according to IEC 61249-2-21 definition


MECHANICAL DATA

- Case: Flat lead SOD-523F package
- High temperature soldering guaranteed: 260°C/10s
- Weight: 9.9mg (approximately)

SOD-523F
APPLICATION

- Portable consumer electronic devices

MAXIMUM RATINGS AND ELECTRICAL CHARACTERISTICS ($T_A=25^\circ\text{C}$ unless otherwise noted)

PARAMETER	SYMBOL	VALUE	UNIT
Working Peak Reverse Voltage	V_{RWM}	30	V
DC Blocking Voltage	V_R	30	V
RMS Reverse Voltage	$V_{R(RMS)}$	21	V
Forward Continuous Current	I_{FM}	200	mA
Peak Forward Surge Current @ $t < 10\text{ms}$	I_{FSM}	4	A
Repetitive Peak Forward Current @ $t < 1.0\text{s}$	I_{FRM}	500	mA
Power Dissipation	P_D	200	mW
Thermal Resistance from Junction to Ambient	R_{thJA}	500	$^\circ\text{C/W}$
Junction Temperature	T_J	125	$^\circ\text{C}$
Storage Temperature Range	T_{STG}	- 55 to + 150	$^\circ\text{C}$

PARAMETER	TEST CONDITION	SYMBOL	MIN	MAX	UNIT
Reverse Breakdown Voltage	at $I_R = 10 \mu\text{A}$	$V_{(BR)}$	30		V
Reverse Current	at $V_R = 25 \text{V}$	I_R		0.5	μA
Forward Voltage	at $I_F = 2\text{mA}$	V_F	0.26	0.33	V
	at $I_F = 15\text{mA}$			0.45	
	at $I_F = 200\text{mA}$			1	V
Capacitance Between Terminals	$V_R=1\text{V}$, $f=1.0\text{MHz}$	C_T	--	10	pF
Reverse Recovery Time	$I_F=I_R=10\text{mA}$ $I_{rr}=0.1I_R$, $R_L=100\Omega$	t_{rr}	--	5	ns

Small Signal Product

RATINGS AND CHARACTERISTICS CURVES

($T_A=25^\circ\text{C}$ unless otherwise noted)

Fig.1 Typical Forward Characteristics

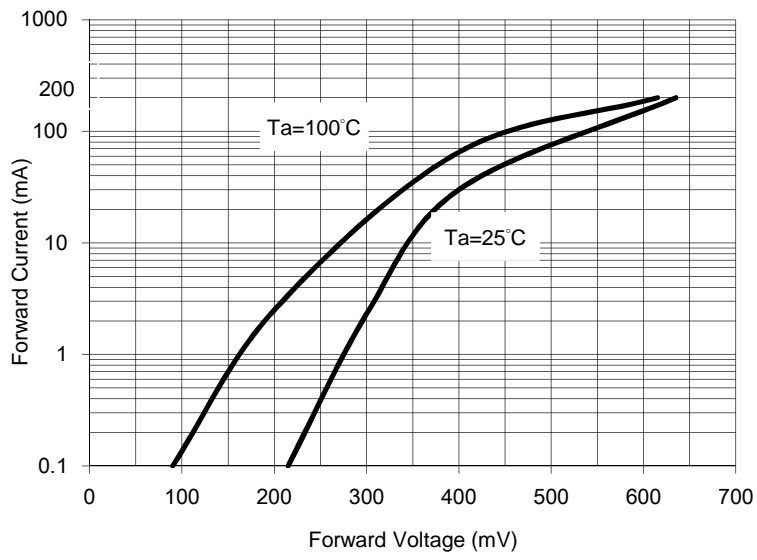


Fig. 2 Typical Reverse Characteristics

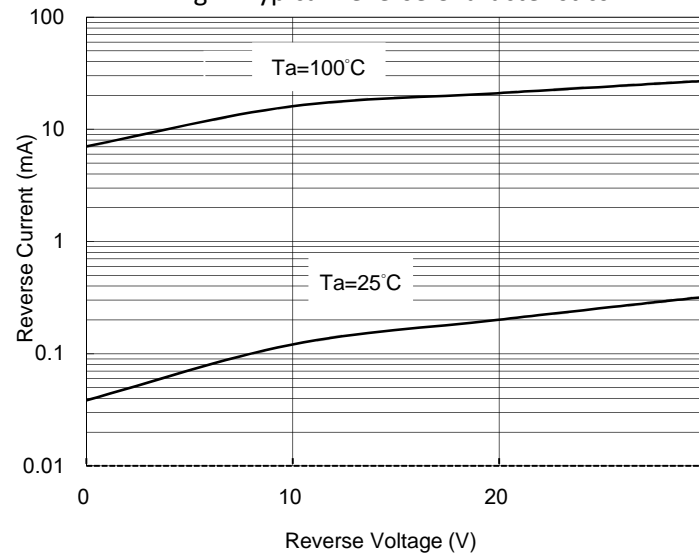


Fig. 3 Power Derating Curve

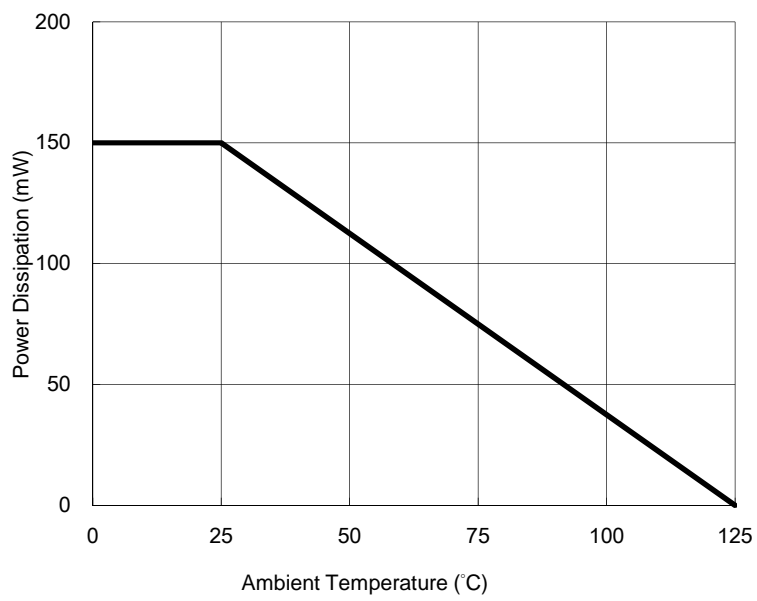
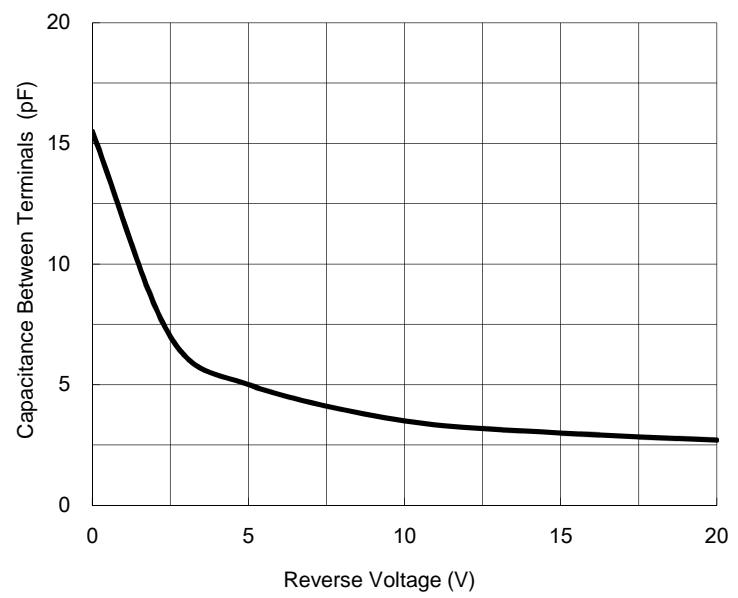


Fig. 4 Typical Capacitance Characteristics



Small Signal Product
ORDERING INFORMATION

PART NO.	MANUFACTURE CODE	PACKING CODE	GREEN COMPOUND CODE	PACKAGE	PACKING	MARKING
BAT43X	(Note)	RS	G	SOD-523F	8K / 7" Reel	S8

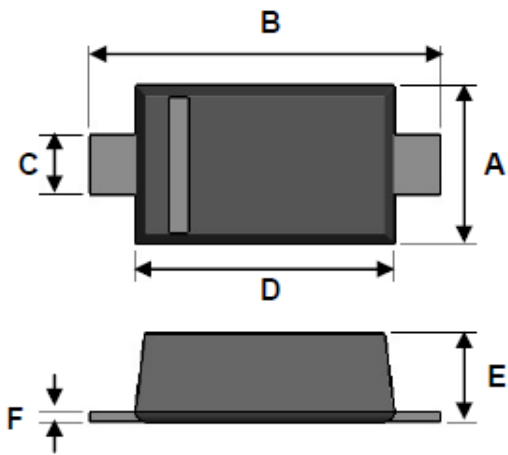
Note: Indicator of manufacturing site for manufacture special control, if empty means no special control requirement

EXAMPLE

PREFERRED P/N	PART NO.	MANUFACTURE CODE	PACKING CODE	GREEN COMPOUND CODE	DESCRIPTION
BAT43X RSG	BAT43X		RS	G	Green compound
BAT43X-M0 RSG	BAT43X	M0	RS	G	Green compound

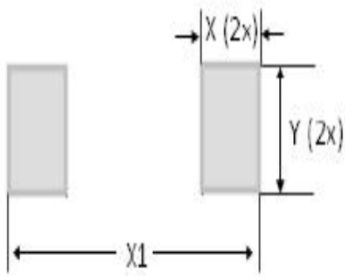
Small Signal Product

**PACKAGE OUTLINE DIMENSIONS
SOD-523F**



DIM.	Unit (mm)		Unit (inch)	
	Min.	Max.	Min.	Max.
A	0.70	0.90	0.028	0.035
B	1.50	1.70	0.059	0.067
C	0.25	0.40	0.010	0.016
D	1.10	1.30	0.043	0.051
E	0.50	0.77	0.020	0.030
F	0.07	0.20	0.003	0.008

SUGGEST PAD LAYOUT



DIM.	Unit (mm)	Unit (inch)
	Typ.	Typ.
X	0.60	0.024
X1	2.30	0.091
Y	0.80	0.031

Small Signal Product**Notice**

Specifications of the products displayed herein are subject to change without notice. TSC or anyone on its behalf, assumes no responsibility or liability for any errors in accuracies.

Information contained herein is intended to provide a product description only. No license, express or implied, to any intellectual property rights is granted by this document. Except as provided in TSC's terms and conditions of sale for such products, TSC assumes no liability whatsoever, and disclaims any express or implied warranty, relating to sale and/or use of TSC products including liability or warranties relating to fitness for a particular purpose, merchantability, or infringement of any patent, copyright, or other intellectual property right.

The products shown herein are not designed for use in medical, life-saving, or life-sustaining applications. Customers using or selling these products for use in such applications do so at their own risk and agree to fully indemnify TSC for any damages resulting from such improper use or sale.