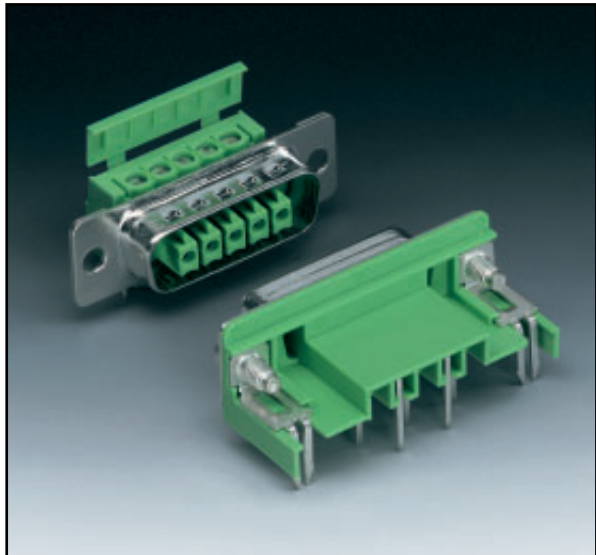


VARIOSUB D-SUB POWER-SUBCON Contact Inserts

In POWER-SUBCON, the principle of the MINI-COMBICON plug connectors has been combined with the excellent shielding properties and geometry of D-SUB connectors.

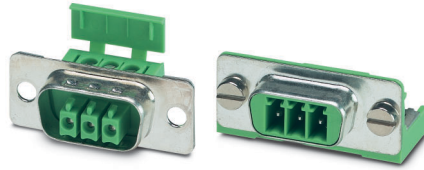
The D-SUB 15 contact carrier has a 5-position plug connection, and the D-SUB 9 contact carrier a 3-position plug connection, with screw connection on the sleeve side and solder-in connection for the PCB on the mounting side.

On the sleeve side, 5 or 3 conductors with a cross-section of up to 1.5 mm² for 250 V / 8 A can be assembled conveniently and safely with screw connection; on the mounting side, the mating part to be soldered into printed circuit boards is available. Further variants of POWER-SUBCON are documented as IP 20 plug connectors in the COMBICON catalog.



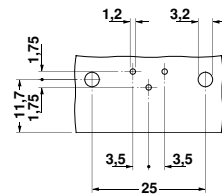
POWER-SUBCON

3-pos. Header



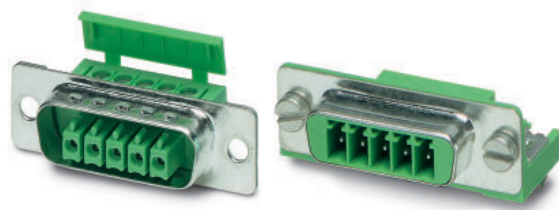
Description	Type	Order No.	Pcs./Pkt.
POWER-SUBCON plug, for sleeve side, shielded, color: green	PSC 1,5/3-F	18 41 90 9	10
POWER-SUBCON header, for mounting side, shielded, color: green,	VS-PSC 1,5/3-M	16 89 31 0	10
POWER-SUBCON header, as above, however, with capacitive ground connection	VS-PSC 1,5/3-M-PE	16 89 33 6	10

Technical data			
Operating current	[A]	8	
Operating voltage	[V]	250	
Connection data			
Core cross section solid	[mm ²]	0.14 - 1.5 / 28 - 16	
Core cross section stranded	[mm ²]	0.14 - 1.5 / 28 - 16	
Thermal and climatic data			
Temperature range	[°C]	- 20 to + 80	
Approval data (UL and CSA)			
Nom. voltage / nom. current / conduc. sizes	UL: [V] / [A] / AWG	300 / 8 / 30 - 14	
	CSA: [V] / [A] / AWG	300 / 8 / 28 - 16	



Drilling diagram: VS-PSC 1,5/3-M (-PE)

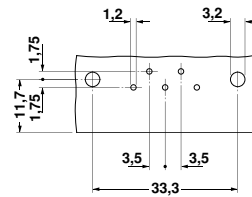
POWER-SUBCON 5-pos. Header



Description	Type	Order No.	Pcs./Pkt.
POWER-SUBCON plug, for sleeve side, shielded, color: green	PSC 1,5/5-F	18 41 91 2	10
POWER-SUBCON header, for mounting side, shielded, color: green,	VS-PSC 1,5/5-M	16 88 82 5	10
POWER-SUBCON header, as above, however, with capacitive ground connection	VS-PSC 1,5/5-M-PE	16 89 32 3	10

Technical data

Operating current	[A]	8
Operating voltage	[V]	250
Connection data		
Core cross section solid	[mm ²]	0.14 - 1.5 / 28 - 16
Core cross section stranded	[mm ²]	0.14 - 1.5 / 28 - 16
Thermal and climatic data		
Temperature range	[°C]	- 20 to + 80
Approval data (UL and CSA)		
Nom. voltage / nom. current / conduc. sizes	UL: [V] / [A] / AWG	300 / 8 / 30 - 14
	CSA: [V] / [A] / AWG	300 / 8 / 28 - 16



Drilling diagram: VC-PSC 1,5/5-M (-PE)