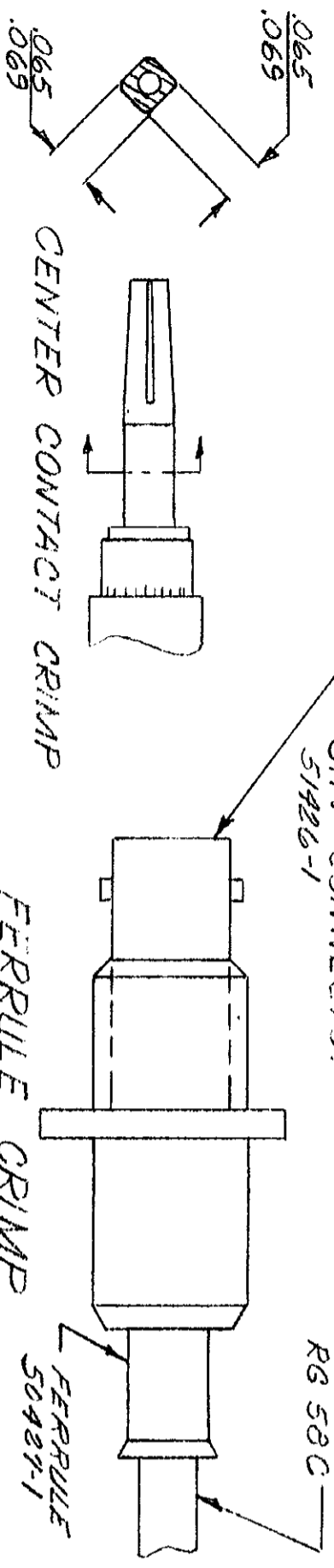
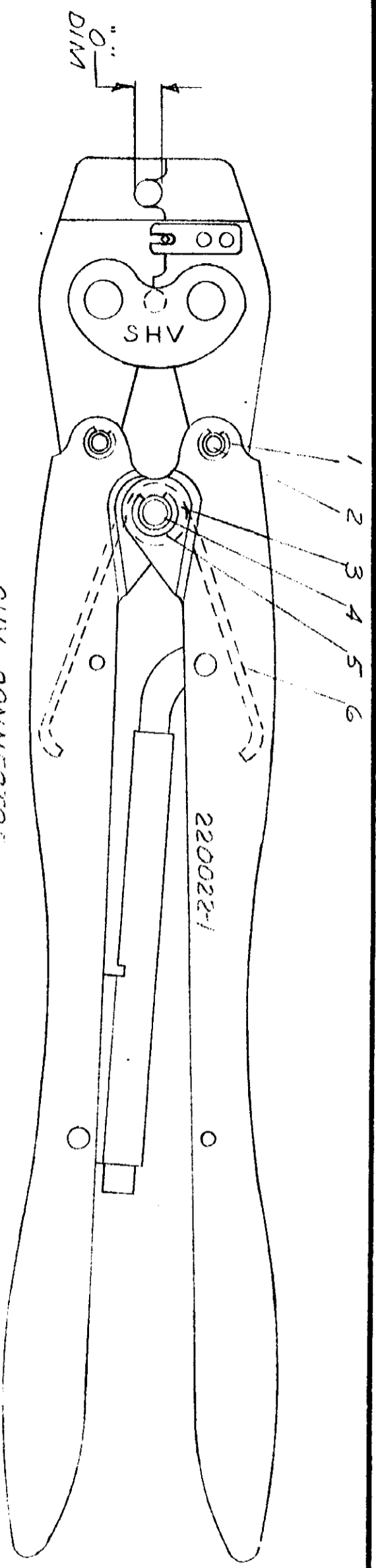


S



0"	DIM
.60	NO 50
.215	.223

THE CRIMP DIMS APPLY ONLY TO THE ABOVE COMBINATIONS ON A CRIMPED PRODUCT.  
METHOD OF GAGING CRIMP DIMS

PLUG GAGE DIMENSIONS APPLY WHEN TOOL IS BOTTOMED BUT NOT UNDER PRESSURE.

For replacement of parts other than listed, tool should be returned to our factory to insure proper Crimp-Crimp adjustment.

NUMBER	220022-1
DESCRIPTION	
REVISION RECORD	
DR	DR
CHK	CHK
DATE	DATE
REVISED	REVISED
REVISED	REVISED
REVISED	REVISED

REQUIRED PER ASSEMBLY	-1
DESCRIPTION	
NUMBER	
DESCRIPTION	
NUMBER	
DESCRIPTION	

ITEM NO	1	2	3	4	5	6
NAME	RING-RETAINING	PIN-RETAINING	COLLAP	PIN-RETAINING	RING-RETAINING	SPRING
NUMBER	21045-3	300432	39366	300445	21045-6	39364
REMARKS						

©1968 BY AMP INCORPORATED. ALL RIGHTS RESERVED.  
AMP PRODUCTS COVERED BY PATENTS AND/OR PATENTS PENDING.

MATERIAL AND FINISH

WIRE - RANGE - INSULATION  
RG 58C  
TOLERANCE EXCEPT AS NOTED ± 1%  
SCALE 1-1

CLASS SHV

LOC M

NO 220022-1

REV A1

NAME HAND TOOL ASSEMBLY

DR B. Shengfeld 10-31-68

CHK J. J. Jorgensen 10-31-68

REV. J. J. Jorgensen 11-3-68



8 7 6 5 4 3 2 1

A

B

C

D