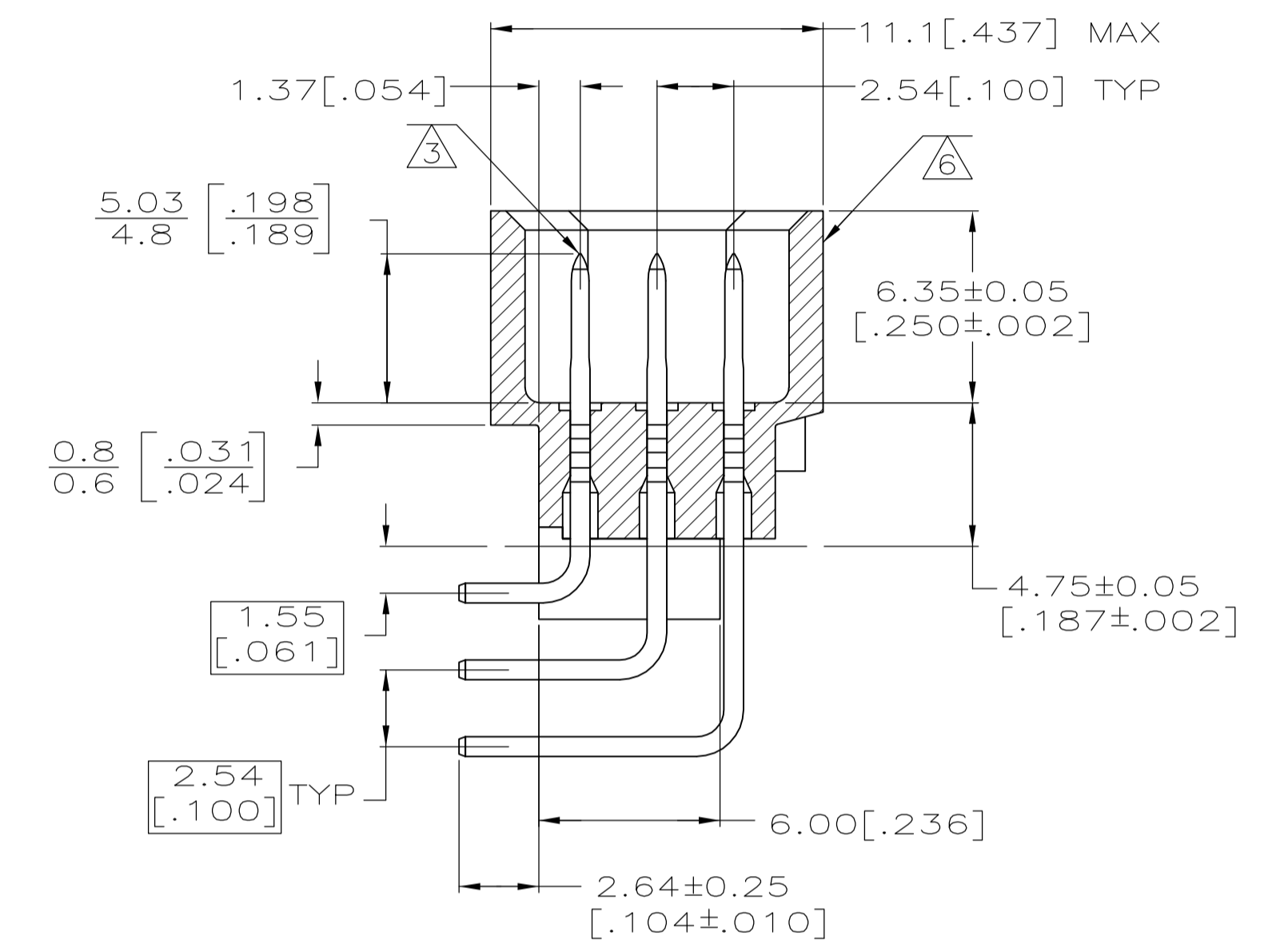
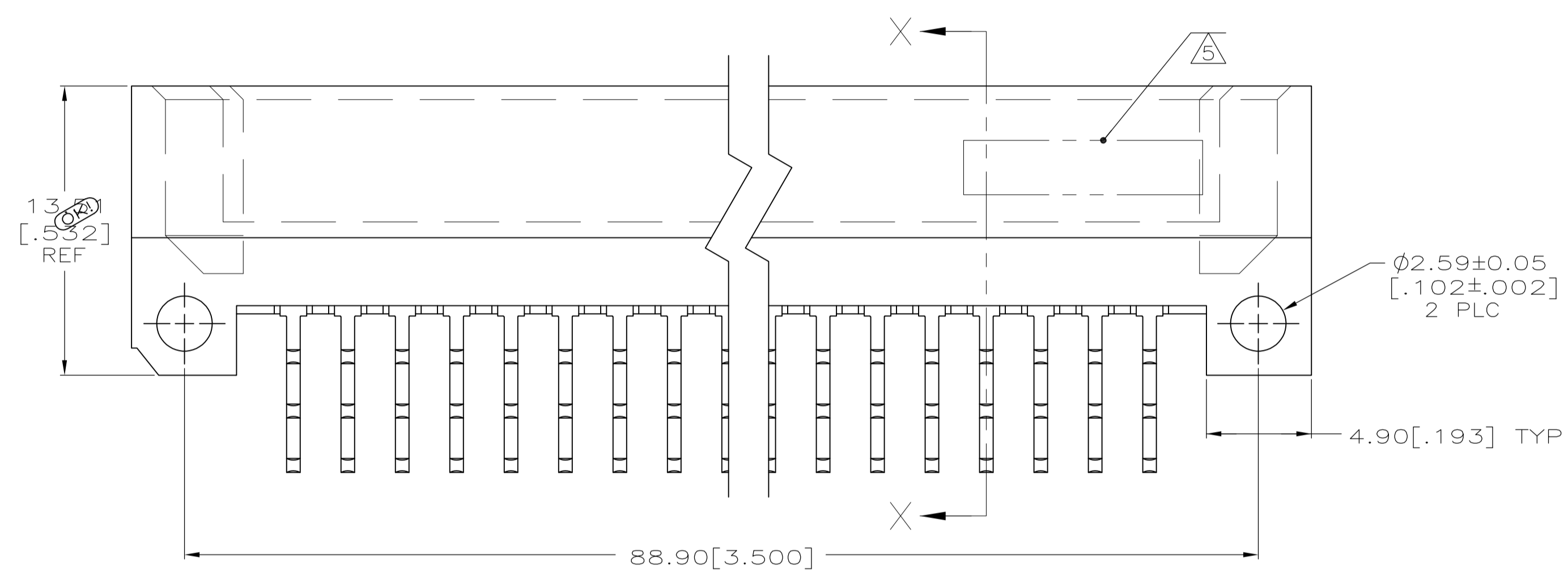
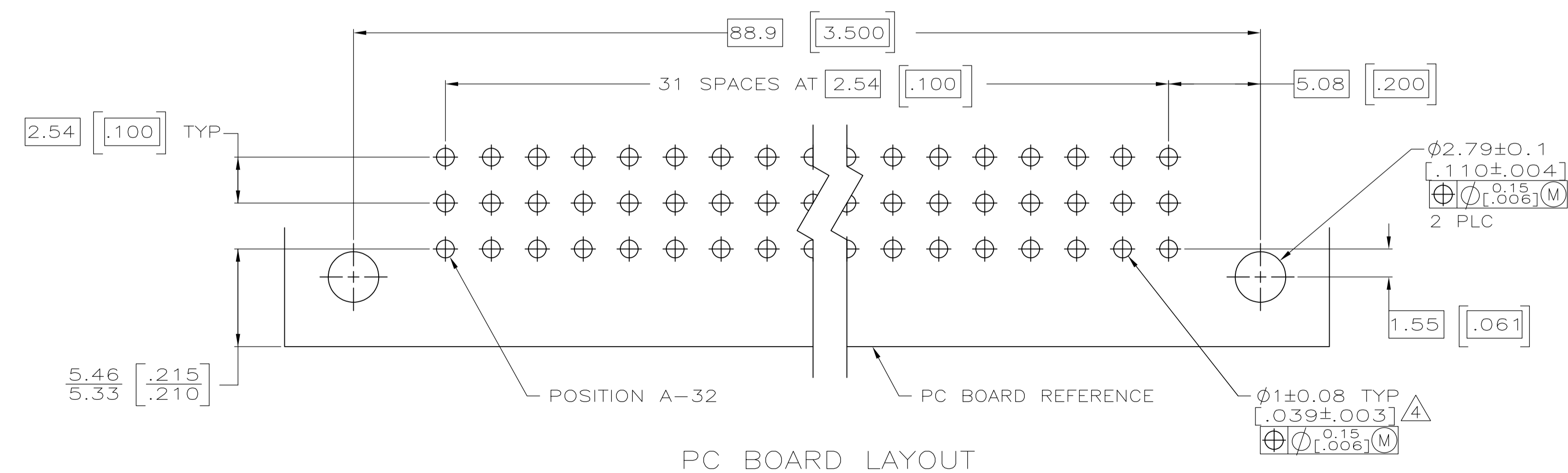
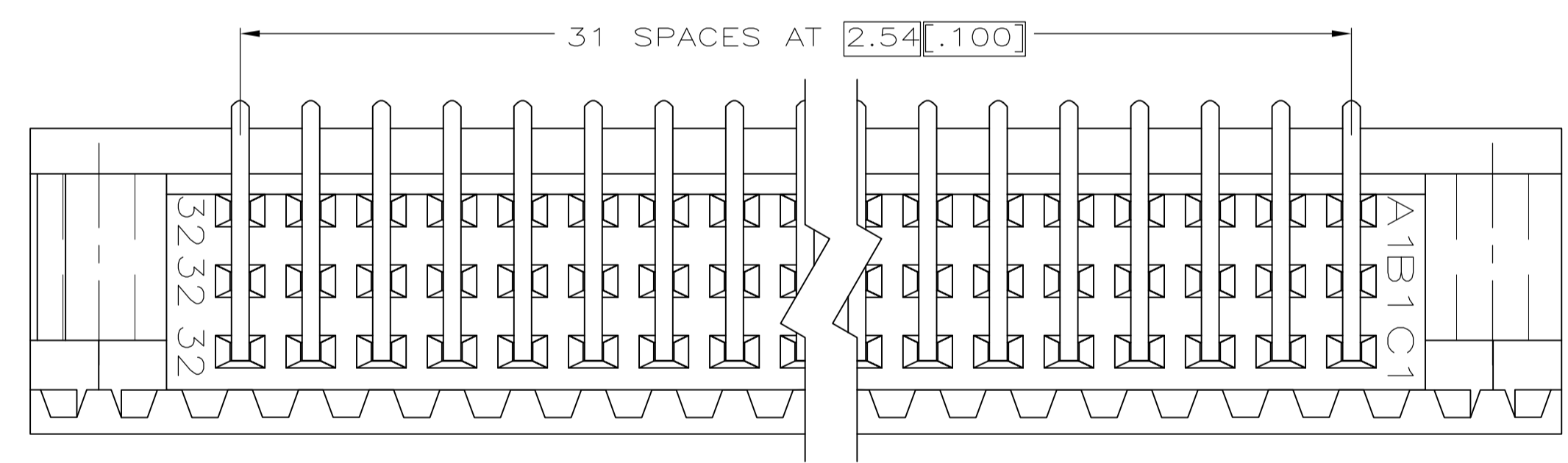


- 1 HOUSING MATERIAL: GLASS-FILLED POLYMER.
- 2 POST MATERIAL: COPPER ALLOY.
- 3 POST FINISH: DIN 41612 CLASS 2 IN CONTACT AREA. TIN PLATE ON POSTS.
- 4 RECOMMENDED HOLE SIZE FOR MANUAL APPLICATION OF CONNECTOR ONTO PC BOARD.
- 5 PART NUMBER, DATE CODE MARKED THIS APPROXIMATE AREA.
- 6 MARKING ON THIS SIDE.



SECTION X-X



PC BOARD LAYOUT

5148003-5  
 PART NO.

THIS DRAWING IS A CONTROLLED DOCUMENT.		DIN J. POLIGNONE DSMAY05		Tyco Electronics Corporation Harrisburg, PA 17105-3608	
DIMENSIONS: mm [INCHES]		TOLERANCES UNLESS OTHERWISE SPECIFIED:		APVD A. SHARPE DSMAY05 NAME	
0 PLC ± - 1 PLC ± - 2 PLC ± - 3 PLC ± 0.1[.005] 4 PLC ± - ANGLES ± -		Ø2.79±0.1 [.110±.004] Ø1±0.08 TYP [.039±.003]		ASSEMBLY, PIN, EUROCARD, TYPE C, 96 POSITION, 2.64[.104] SOLDER POST WITH GUIDE FEATURES	
MATERIAL		FINISH		SIZE CASE CODE DRAWING NO RESTRICTED TO	
1 HOUSING MATERIAL: GLASS-FILLED POLYMER. 2 POST MATERIAL: COPPER ALLOY. 3 POST FINISH: DIN 41612 CLASS 2 IN CONTACT AREA. TIN PLATE ON POSTS.		4 RECOMMENDED HOLE SIZE FOR MANUAL APPLICATION OF CONNECTOR ONTO PC BOARD. 5 PART NUMBER, DATE CODE MARKED THIS APPROXIMATE AREA. 6 MARKING ON THIS SIDE.		A1 00779 C=5148003 CUSTOMER DRAWING SCALE 5:1 SHEET 1 OF 1 REV Q1	