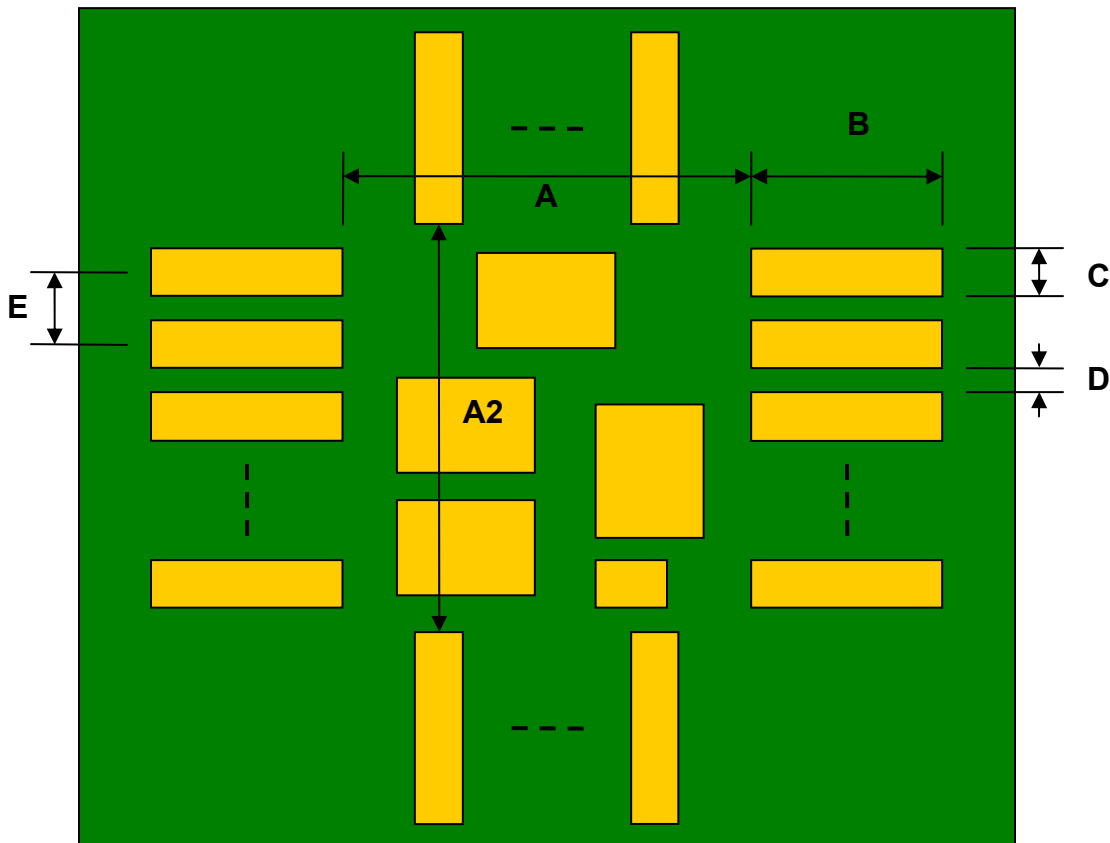


QFN-36 to DIP-42 SMT Adapter (0.9 mm pitch, 9 x 11 mm body)

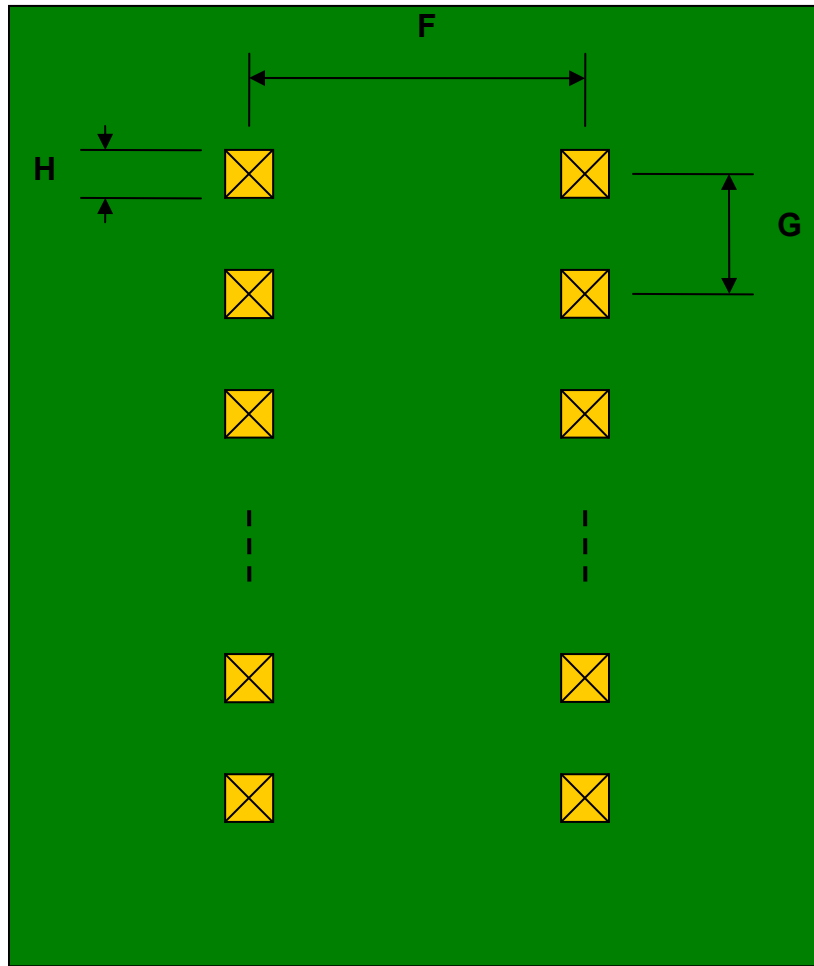
REF.	DIMENSIONS					
	mm			inches		
	MIN.	TYP.	MAX.	MIN.	TYP.	MAX.
A		7.89				
A2		9.90				
B		0.95				
C		0.60				
D		0.30				
E		0.90				
F					0.600	
G					0.100	
H					0.025	

Top View (SMT Footprint)



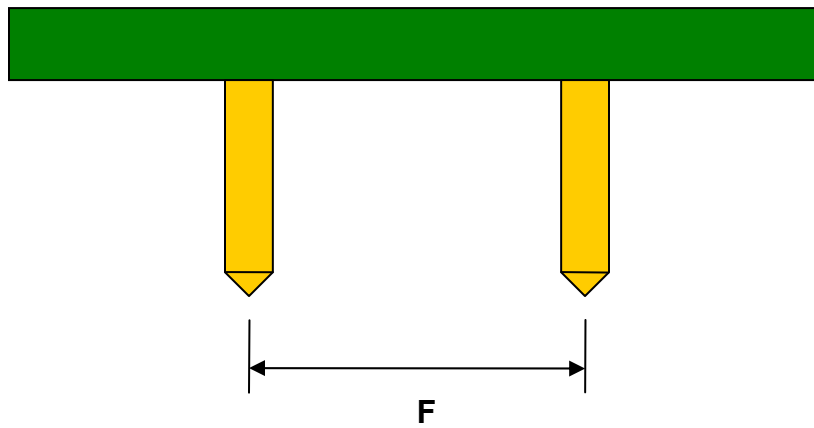
(Representative drawing only - not to scale)

Bottom View (DIP Pins)



(Representative drawing only - not to scale)

Side View (DIP Pins)



(Representative drawing only - not to scale)