

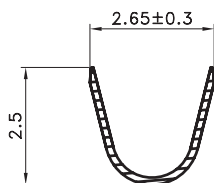
1

2

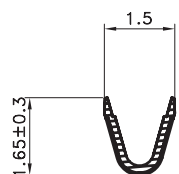
3

4

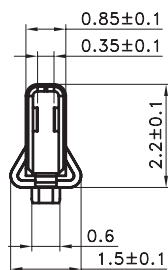
5



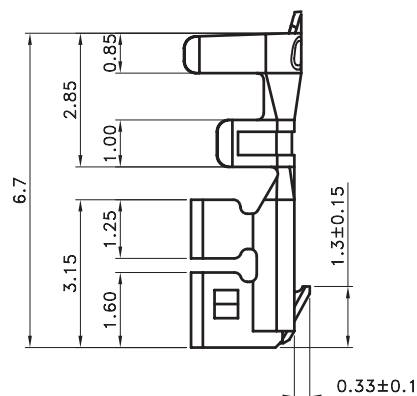
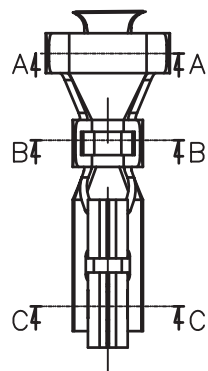
SEC.A-A



SEC.B-B



SEC.C-C



## TECHNICAL CHARACTERISTICS

## MATERIAL

CONTACT MATERIAL: COPPER ALLOY  
CONTACT TYPE: STAMPED  
CONTACT PLATING: TIN  
QUALITY CLASS: 25 MATING CYCLES  
PITCH: 2.00MM

## ENVIRONMENTAL

OPERATING TEMPERATURE: -25 UP TO 85°C  
COMPLIANCE: LEAD FREE AND ROHS

## ELECTRICAL

CURRENT RATING: 3A  
WORKING VOLTAGE: 250V AC  
CONTACT RESISTANCE: 20 mOHM MAX

## WIRE DIMENSION

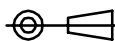
AWG: AWG 22 - 28

## PACKAGING

BULK/LOOSE DELIVERY IN A BAG  
EACH CONTACT SEPARATED FROM EACH OTHER  
NOT ON A REEL  
100PCS/PER BAG. MULTIPLE OF 100PCS ONLY  
1PCS OF 62000113722DEC=1 CRIMP CONTACT  
SO 1 BAG MEANS 100 PCS OF 62400113722DEC

RoHS Compliant

PROJECTION:



GENERAL TOLERANCE

.X =  $\pm 0.2$ .XX =  $\pm 0.15$ 

APPROVAL: RJ

UNIT: MM

DESCRIPTION: 2.00MM DUAL ROW FEMALE CRIMP CONTACT TERMINAL

SIZE

SCALE:

WERI PART NO: 624 001 137 22 DEC

**A4**

SHEET: 1/2

DRAW: MIKE

G			
F			
E			
D			
C			
B			
A	15-MAY-12	PDF	GG
REV	DATE	FILE	BY

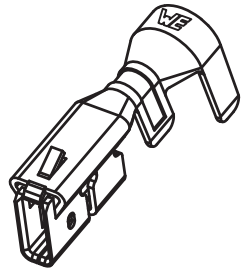
1

2

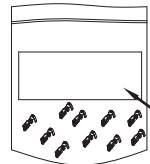
3

4

5



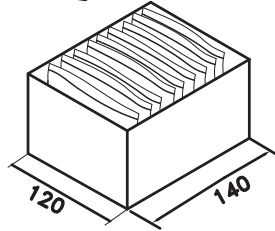
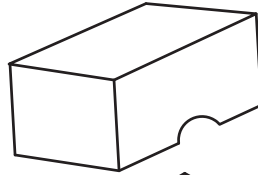
(A)



100PCS/BAG

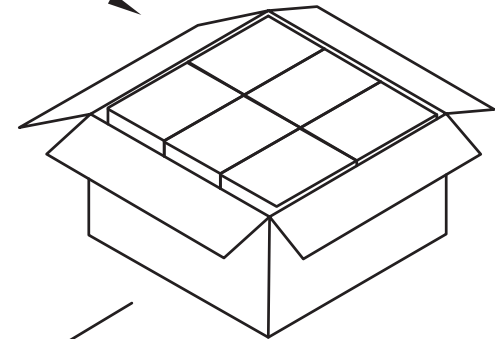
Label

COVER



2KPCS/BOX

(B)



12BOX/Carton



face 1  
face 3

face 2  
face 4

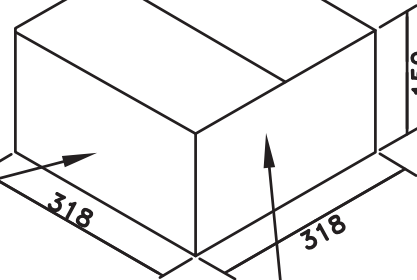
face 2

face 3

(C)

face 1

face 4



Note:

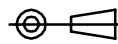
1.Bag size: 100\*120\*0.06

2.Box size: 120\*140\*60

3.Carton size: 318\*318\*150

RoHS Compliant			
G			
F			
E			
D			
C			
B			
A			
REV	DATE	FILE	BY

PROJECTION:



APPROVAL: RJ

GENERAL TOLERANCE

.X = +/- 0.2

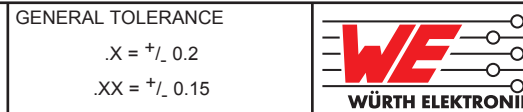
.XX = +/- 0.15

UNIT: MM

SCALE:

SHEET: 2/2

DRAW: MIKE



DESCRIPTION: 2.00MM DUAL ROW FEMALE CRIMP CONTACT TERMINAL

WERI PART NO: 624 001 137 22 DEC

SIZE

A4

A

B

C

D