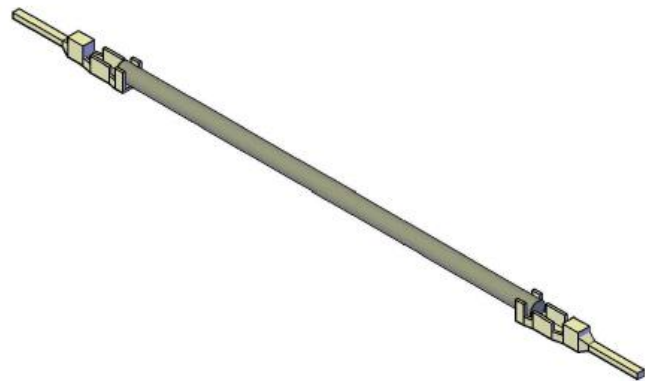
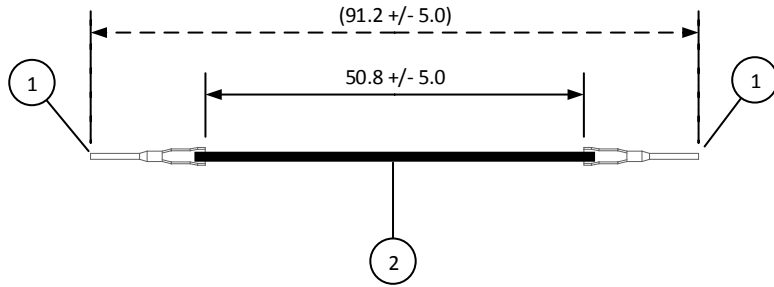


| 4    |                    | 3                     |           | 2         |                    | 1 |  |
|------|--------------------|-----------------------|-----------|-----------|--------------------|---|--|
| ITEM | CONNECTOR PART NO. | DESCRIPTION           | IPI CHECK | EOR CHECK | Applicable Tooling |   |  |
| 1    | SWPJT-21T-P0.5     | WPJ CONNECTOR CONTACT |           |           | APPLICATOR         |   |  |
| 2    | UL1015, 18 AWG     | BLACK                 |           |           |                    |   |  |

| Applicable Housings |                  |
|---------------------|------------------|
| NO. OF CIRCUITS     | HOUSING PART NO. |
| 2                   | 02T-WPJV-1-SM    |
| 3                   | 03T-WPJV-1-SM    |



**JST**

|  |   |                   |
|--|---|-------------------|
| SCALE  | CUSTOMER NAME   | CUSTOMER PART NO. |
| 1:1  |   |                   |
| DIMENSIONS   | DESCRIPTION   |                   |
| All dimensions are in MM with a tolerance of +/- 3.0 unless otherwise specified. | 5.0 mm Pitch WPJ Series Standard Leads - 2" Inside Length DOUBLE-END LEADS, M-M |                   |
| DRAWN BY   | ASSEMBLY PART NO.   |                   |
| STEVEN PILKINGTON  | AWPJWPJ18K51T   |                   |
| CHECKED BY   | DRAWING NO. & REVISION  | REVISED           |
| JUSTIN BAKER   | GAM-190   | 6/7/2016          |

| REV. | DESCRIPTION | DATE | BY |
|------|-------------|------|----|
|      |             |      |    |

4 3 2 1