

MATERIALS AND FINISHES

BLOCK: ALUMINUM 6061
 PLATED ELECTROLESS NICKEL

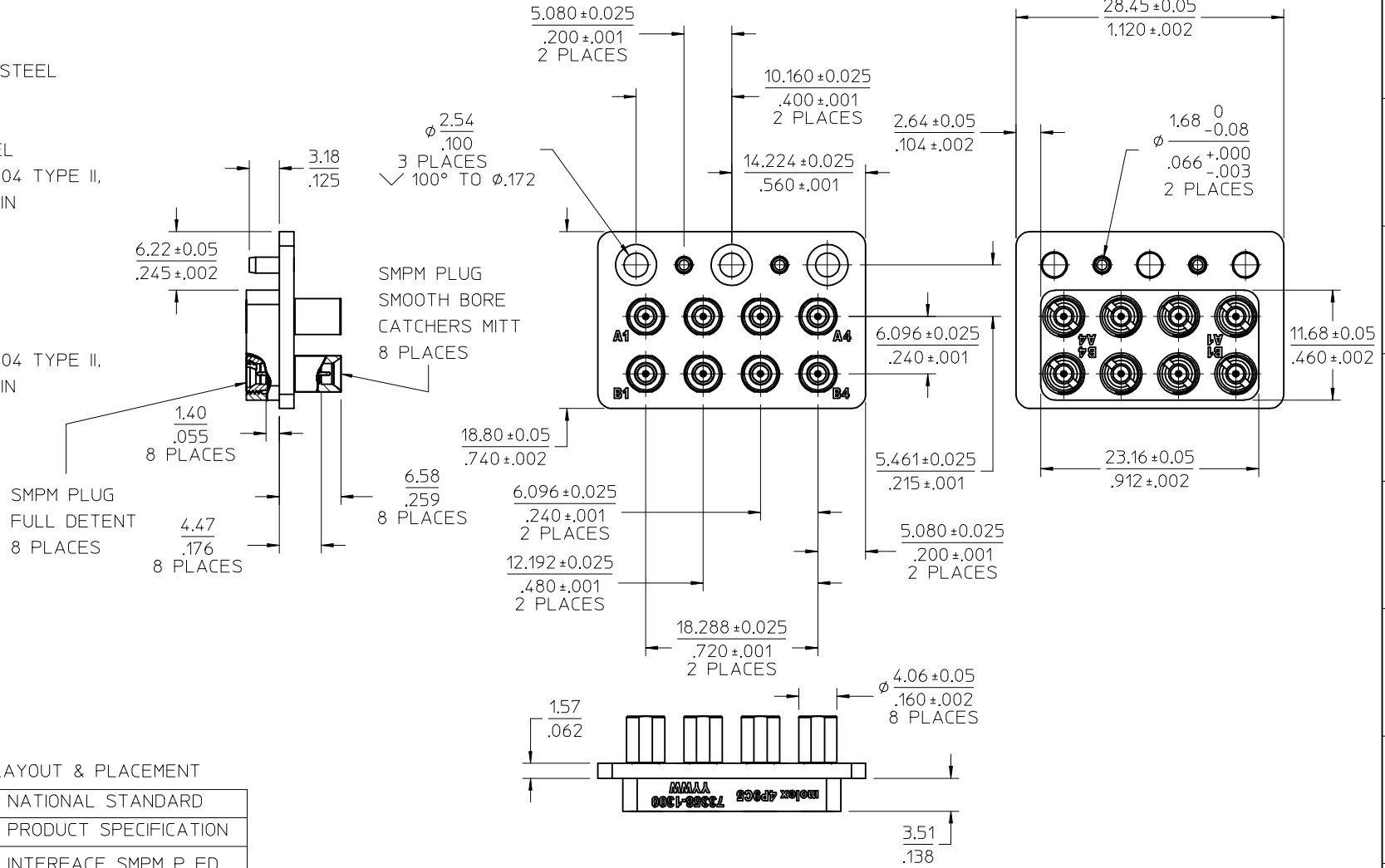
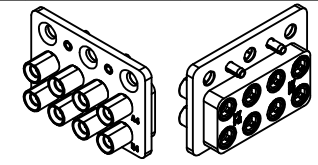
SMP DETENT SHROUD: STAINLESS STEEL
 PASSIVATED

ALIGNMENT PINS: STAINLESS STEEL
 PASSIVATED

BODY SMPM: STAINLESS STEEL
 PLATED GOLD PER MIL-G-45204 TYPE II,
 GRADE C, CLASS 1 (50 μ-in MIN
 OVER NICKEL 50 μ-in MIN

INSULATORS: PTFE

CONTACT: BERYLLIUM COPPER
 PLATED GOLD PER MIL-G-45204 TYPE II,
 GRADE C, CLASS 1 (50 μ-in MIN
 OVER NICKEL 50 μ-in MIN



PART # 73358-1300

SEE PS-89675-470 FOR PCB LAYOUT & PLACEMENT

ANSI/VITA 67.2	NATIONAL STANDARD
PS-89675-470	PRODUCT SPECIFICATION
MIL-STD-348A, FIG. 328.2	INTERFACE SMPM P FD
SPECIFICATION	DESCRIPTION

CHG: SHROUD BORE CHANGED FROM ∅.087 TO ∅.0875 EC NO: URF2017-0372 DRW:PSWAM102 2017/05/03 CHKD:BBB 2017/05/03 APPR:AROBERTSON 2017/05/12	QUALITY SYMBOLS ∇=0 ∇=0 ∇=0	GENERAL TOLERANCES (UNLESS SPECIFIED)	DIMENSION STYLE MM/IN	SCALE INCH	DESIGN UNITS INCH	THIRD ANGLE PROJECTION	
		4 PLACES ± .010 ± .010 3 PLACES ± .010 ± .010 2 PLACES ± .010 ± .010 1 PLACE ± .010 ± .010 0 PLACE ± .010 ± .010	DRAWN BY AROBERTSON	DATE 2014/01/25	TITLE VITA 67.2 8 PORT MODULE MID PLANE SMPM PLUG SMPM-VITA, EWR-10029-B		
		ANGULAR ± 2°	CHECKED BY SSS	DATE 2014/01/25	APPROVED BY WSP INK		
		DRAFT WHERE APPLICABLE MUST REMAIN WITHIN DIMENSIONS	MATERIAL NO. 733581300	DATE 2014/02/06	DOCUMENT NO. SD-73358-130	SHEET NO. 1 OF 1	

THIS DRAWING CONTAINS INFORMATION THAT IS PROPRIETARY TO MOLEX INCORPORATED AND SHOULD NOT BE USED WITHOUT WRITTEN PERMISSION