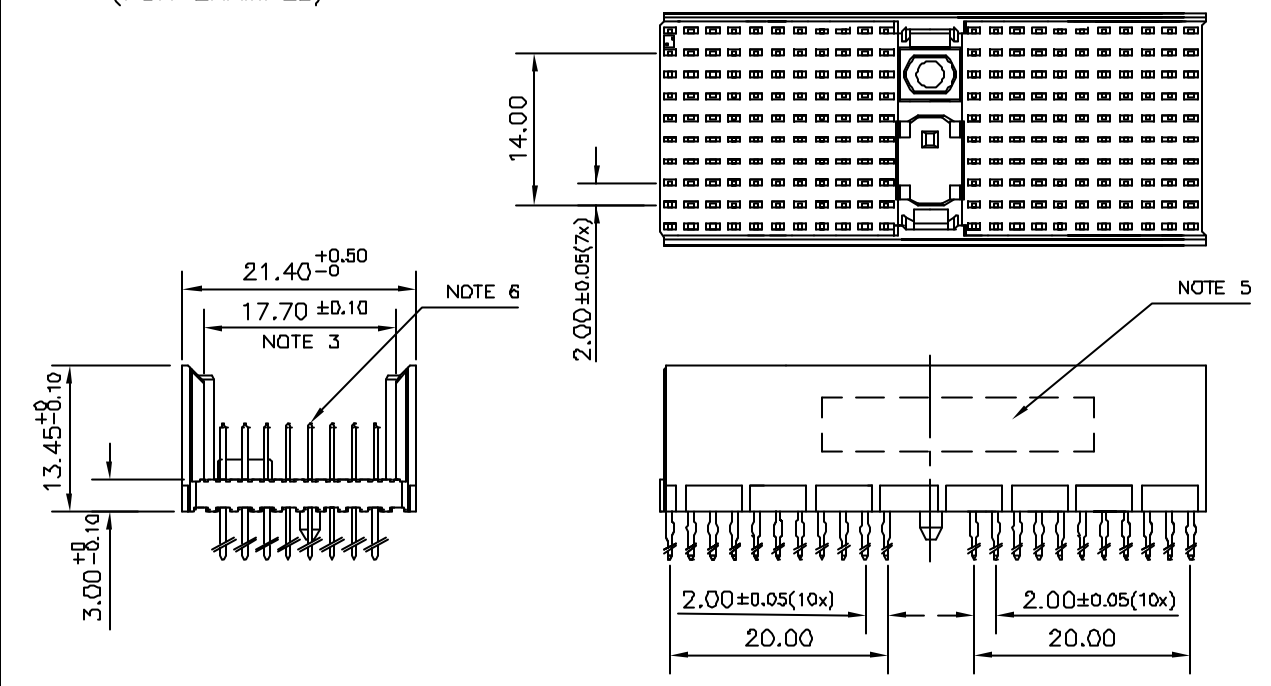


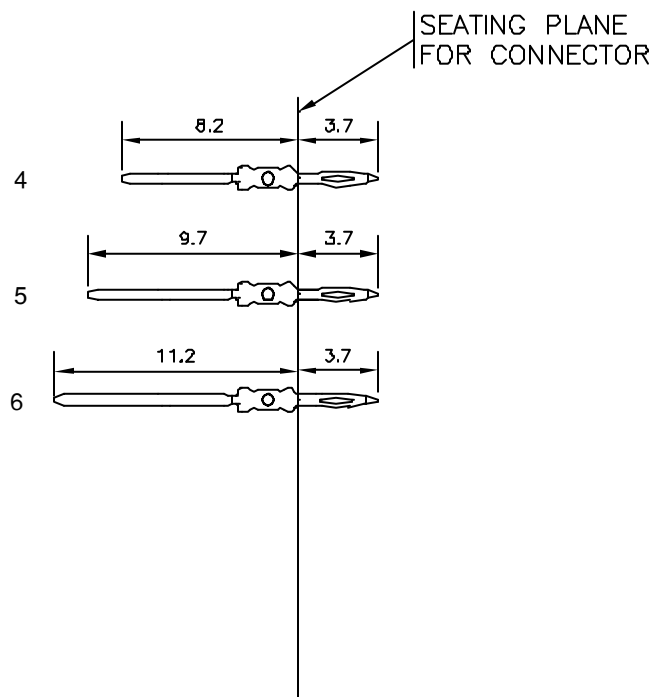
LOADING PATTERN MATING SIDE

y	0	0	0	0	0	0	0	0	0	0	0	0	0	0	0	0	0	0	0	0	0	
h	5	5	5	5	6	5	5	5	5	6	5	5	5	5	6	5	5	5	5	6	5	5
g	5	5	5	5	6	5	5	5	5	6	5	5	5	5	6	5	5	5	5	6	5	5
f	6	6	6	6	5	6	6	6	6	5	6	6	6	6	5	6	6	6	6	5	6	6
e	5	5	5	5	6	5	5	5	5	6	5	5	5	5	6	5	5	5	5	6	5	5
d	5	5	5	5	6	5	5	5	5	6	5	5	5	5	6	5	5	5	5	6	5	5
c	6	6	6	6	5	6	6	6	6	5	6	6	6	6	5	6	6	6	6	5	6	6
b	5	5	5	5	5	5	5	5	5	5	5	5	5	5	5	5	5	5	5	5	5	5
a	5	5	5	5	6	5	5	5	5	6	5	5	5	5	6	5	5	5	5	6	5	5
z	0	0	0	0	0	0	0	0	0	0	0	0	0	0	0	0	0	0	0	0	0	0
POS	01	05	10	15	20	25																

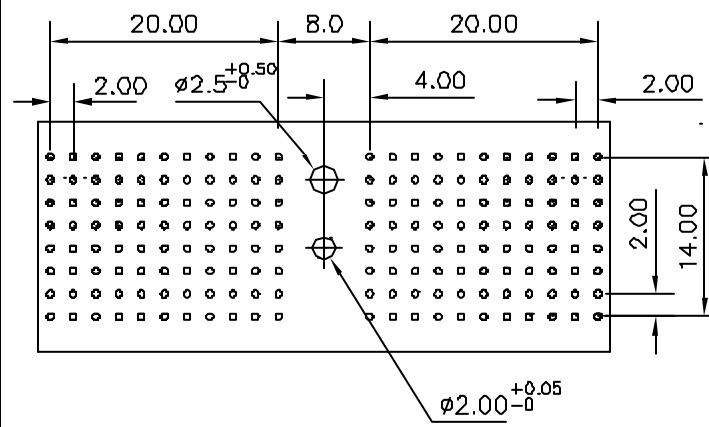
LOADED CONNECTOR ASSEMBLY (FOR EXAMPLE)



CONTACT OVERVIEW



LAY-OUT P.C.B.-HOLE



LEAD FREE INDICATOR : LF = LEAD FREE (DIGIT 15 & 16)

HM2P87PD81A0

PLATING CODE (DIGIT 13 AND 14) (REF DRW NO. BS, C , 201844 , 003)

NOTES

- THIS PRODUCT IS CSA APPROVED.
- THIS PRODUCT IS UL RECOGNIZED.
- MEASURED AT THE BOTTOM.
- MATERIAL CONTACT: PHOSPHORBRONZE
HOUSING: CREAM WHITE GLASS FILLED POLYESTER UL-94V0
- CONNECTOR PRINTED WITH P/N AND DATE CODE.
- FOR ACTUAL CONTACT LOADINGS, SEE LOADING PATTERN MATING SIDE.
- SHAPE OF CONNECTOR HOUSING CAN ALTER DEPENDING ON PRODUCTION LOCATION
- THE PRODUCT (LF) MEETS EUROPEAN UNION DIRECTIVES AND OTHER COUNTRY REGULATIONS AS DESCRIBED IN GS-22-008
- FOR RECOMMENDED PTH DIMENSIONS REFER DRAWING : BS, A , 201572 , 001

PART NO: HM2P87PD81A0----

mat'l. code SEE NOTE 4			surface ISO 1302	tolerance ISO 406 ISO 1101	projection	product family MILLIPACS	
ltr	ecn no	dr	date	tolerances unless otherwise specified	MM	title MPACS 8+2R STR HDR PF CONN TYPE D	
A	I05-0253	MINI	2005-11-30	angles 0°±1°			
B	I06-0132	MINI	2006-08-02	linear	scale		
			dr	MINI K VANDANATH	2005-11-30	dwg no	
			enr	BIJU K PAUL	2005-11-30	sheet 1 of 1	
			chr	BIJU K PAUL	2006-08-02	size	
			appd	BIJU K PAUL	2006-08-02	A3	
sheet index		revision	B	type			Product Customer Drawing
sheet		sheet	1				

FCI
 FCIconnect.com
 Copyright FCI