

8

7

6

5

4

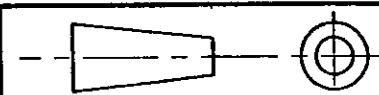
3

2

1

DO NOT SCALE

DIMENSIONS IN MM.



NOTES:

1. PARTS ARE MOISTURISED.

KEEP IN SEALED BAG UNTIL REQUIRED.  
RE-SEAL BAG IF OPENED FOR ANY REASON.

C.A.D. FILE CODE  
S. C344160

F

E

D

C

B

A

H

G

F

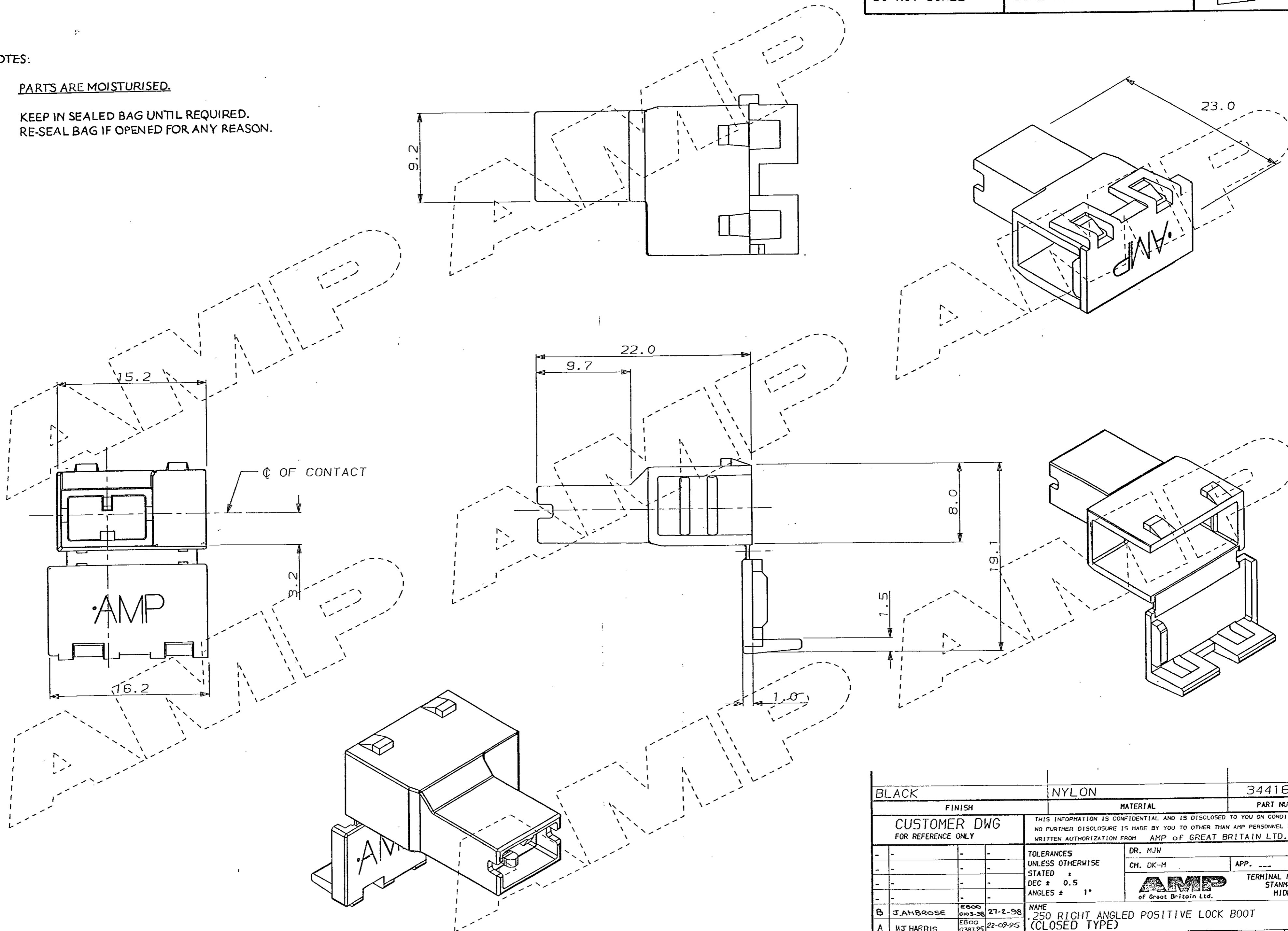
E

D


C

B

A



WAS CP87-025-D2

BLACK		NYLON		344160-1	
FINISH		MATERIAL		PART NUMBER	
CUSTOMER DWG FOR REFERENCE ONLY		THIS INFORMATION IS CONFIDENTIAL AND IS DISCLOSED TO YOU ON CONDITION THAT NO FURTHER DISCLOSURE IS MADE BY YOU TO OTHER THAN AMP PERSONNEL WITHOUT WRITTEN AUTHORIZATION FROM AMP OF GREAT BRITAIN LTD.			
TOLERANCES UNLESS OTHERWISE STATED ±		DR. MJW		12-1-88	
DEC ± 0.5		CH. DK-M		APP. ---	
ANGLES ± 1°		 of Great Britain Ltd. TERMINAL HOUSE STANMORE MIDDX.			
B	J. AMBROSE	EB00 0103-28	27-2-98	NAME .250 RIGHT ANGLED POSITIVE LOCK BOOT (CLOSED TYPE)	
A	M. J. HARRIS	EB00 0387-25	22-09-95	SCALE	LOC
0	M. J. MELAN	CS719	27-2-91	SIZE	DWG. No.
REV	APPROVED	ECN	DATE	4/1	E A2
					C344160
				REV	SHEET
				B	1/1

8

7

6

5

4

3

2

1