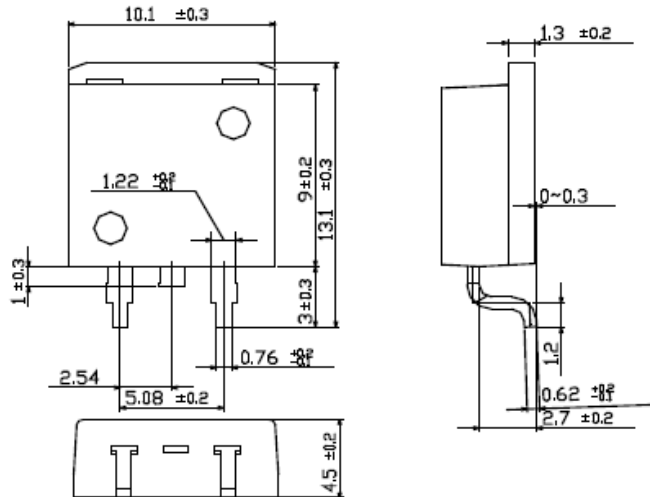


|         |      |         |               |
|---------|------|---------|---------------|
| Product | IGBT | Package | TO-263S(LPDS) |
|---------|------|---------|---------------|

## 1.Scope

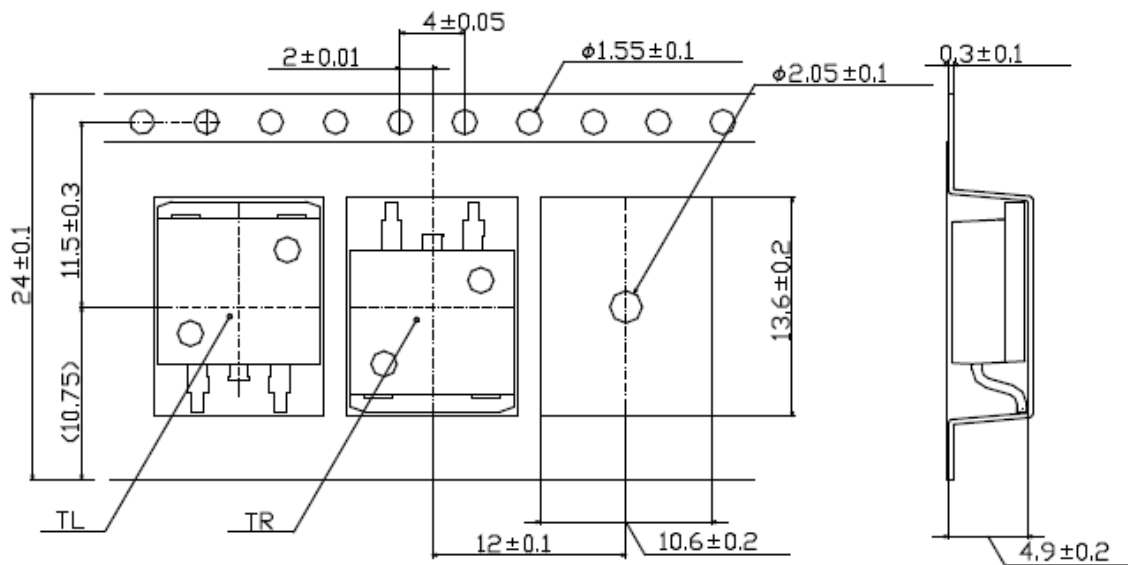
This specification covers the tape packing requirements for TO-263S  
 For individual diodes the applicable specification shall be referred to.

## 2.Components description Unit:mm



Note) The applicable specification describes in detail for individual SiC.  
 This figure is only for reference.

## 3.Taping dimensions



Unit:mm

Note) Feed holes might be cover with the adhesive tape, but nothing will affect for using by that.

# Packing

## 4. Taping packaging specification

### 4-1 Direction of tape winding.

TL Connection heat radiation fin comes to feeding hole side.  
 Unless specified otherwise please place order with TL trend.

### 4-2 Cumulative pitch tolerance.

The cumulative pitch tolerance of the mold for producing the carrier tape shall be within 0.2mm per 10 pitches.

### 4-3 The minimum radius to bend the carrier tape.

Carrier tape shall be flexible enough to protect from no component and damage under a minimum radius.  
 However, it shall be defined only inside of carrier tape.

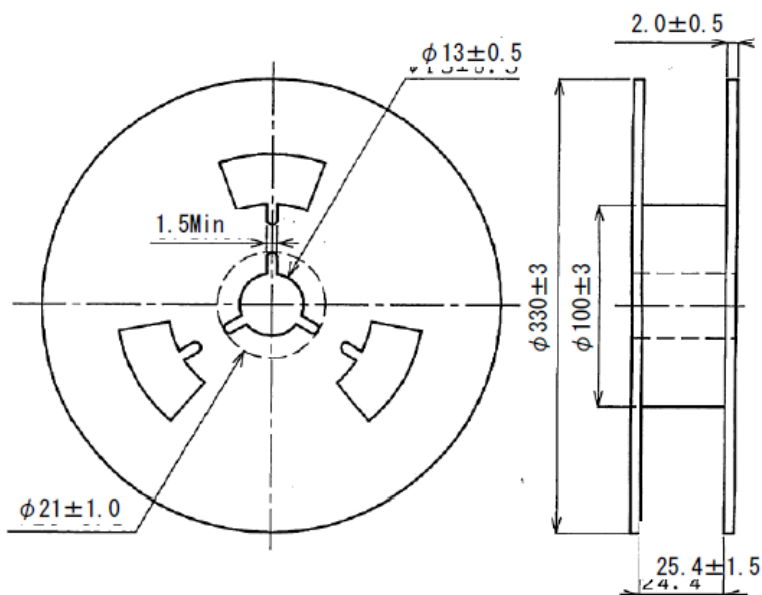
### 4-4 The material of carrier tape.

PET

### 4-5. Failure Rate

|                      | Rate of occurrence | Remarks                         |
|----------------------|--------------------|---------------------------------|
| Continuous missing   | 0%                 | Except leader and trail portion |
| Uncontinuous missing | MAX 0.1%/reel      |                                 |

## 5. Reel dimensions Unit:mm

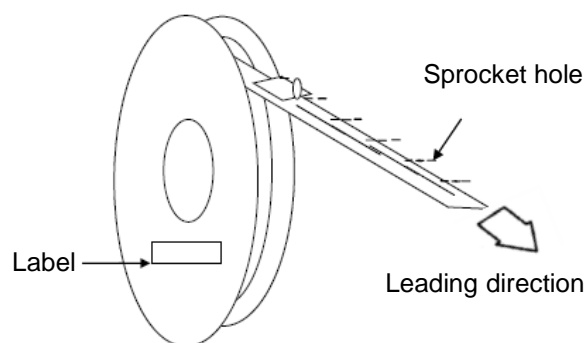


# Packing

## 6. Reeling specification

### 6-1 Leading direction

Leading direction of carrier tape shall be indicated as below.



### 6-2 Leader Unit:mm

Leader tape shall be separated into two parts.

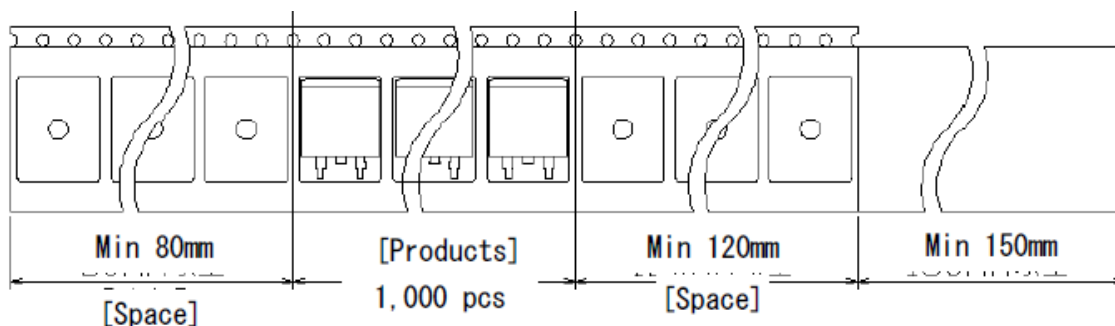
(adhesive tape at first part and carrier tape without products)

### 6-3 Trail

Trail tape shall remain with no product and trail tape shall not be stuck directly on a reel.

### 6-4.Treatment

The end of leader tape shall be fixed with the white adhesive tape.



## 7.Type

Product code of taping shall be composed as indicated below.

Ex: RFE10BM3S

TL

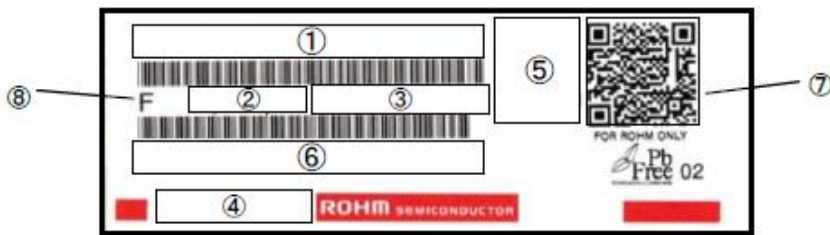
Type code

Taping code

## 8.Quantity

Quantity per one reel is 1,000pcs.

## 9. Marking



1. Part No.
2. Quantity
3. Lot No.
4. The Place of origin
5. Inspector mark
6. Type No. (ROHM use only)
7. QR code (ROHM use only)
8. Pb free sign

## 10. Package

The reel shall be packed in the paper case.  
And put the top on it by the adhesive tape at 2 position.

