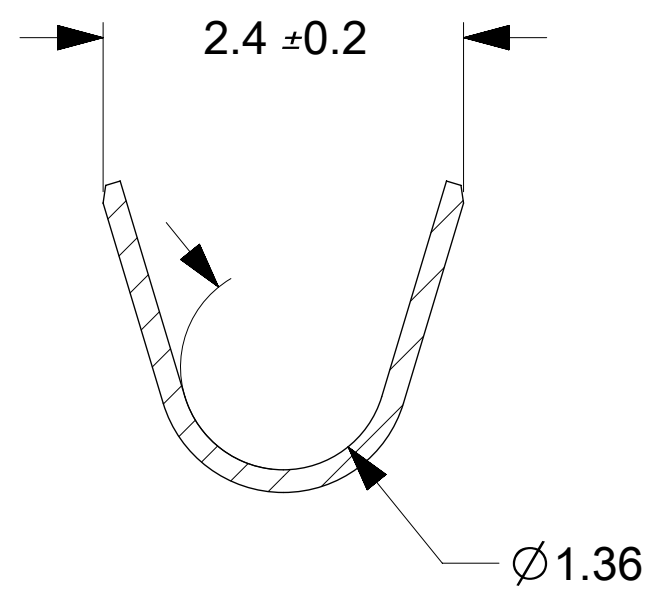


SECTION Y-Y
SCALE 20:1
ROTATED 180°



SECTION Z-Z
SCALE 20:1
ROTATED 180°

NOTES:

1. MATERIAL: COPPER ALLOY
2. FINISH:
2.5µm MIN OVERALL ELECTROPLATE MATTE TIN OVER
1.25µm MIN OVERALL ELECTROPLATED MATTE NICKEL
3. PRODUCT SPECIFICATION: 2042200000-PS
4. APPLICATION SPECIFICATION: 2042200000-AS
5. PACKAGING SPECIFICATION: 2043010000-PK
6. THIS CRIMP TERMINAL TO BE USED WITH ASSEMBLY SERIES 204220.
7. THIS CRIMP TERMINAL MATES WITH RECEPTACLE CRIMP TERMINAL SERIES 2042261.
8. THIS PART CONFORMS TO CLASS 'B' REQUIREMENTS OF COSMETIC SPECIFICATION PS-45499-002.
9. WIRE SPECIFICATIONS:
AWG: 22 and 24 awg
INSULATION OD RANGE: 0.95mm - 1.4mm
10. CRIMP TOOLING:
APPLICATOR PART NUMBER: 638083700
HAND TOOL PART NUMBER: 2002180400

QUALITY SYMBOLS ▽ = 0 ▽ = 0 ▽ = 0 ▽ = 0 ▽ = 0 ▽ = 0 ▽ = 0 ▽ = 0 ▽ = 0	THIS DRAWING CONTAINS INFORMATION THAT IS PROPRIETARY TO MOLEX ELECTRONIC TECHNOLOGIES, LLC AND SHOULD NOT BE USED WITHOUT WRITTEN PERMISSION				DIMENSION UNITS mm		SCALE 15:1					
	GENERAL TOLERANCES (UNLESS SPECIFIED)		DRWN BY TGREGORI		DATE 2018/01/03		RECEPTACLE CRIMP TERMINAL SQUBA 1.8					
	ANGULAR TOL ± °		CHKD BY		DATE						PRODUCT CUSTOMER DRAWING	
	4 PLACES ±		APPR BY RHODGE		DATE 2018/01/26		SERIES 204301		MATERIAL NUMBER 2043010001			
3 PLACES ±		DRAFTING SIZE D		THIRD ANGLE PROJECTION		DOCUMENT NUMBER 2043010000-SD		DOC TYPE PSD		DOC PART SHEET NUMBER 000 1 OF 1		
2 PLACES ±		EC NO: 173063		DRWN: TGREGORI		CHKD: RHODGE		REV: APPR: RHODGE		A2		
1 PLACE ± 0.2		2018/03/02		2018/03/02		2018/03/02		2018/03/02		19:01:24		
0 PLACES ±		DRAFT WHERE APPLICABLE MUST REMAIN WITHIN DIMENSIONS		6		5		4		3		

