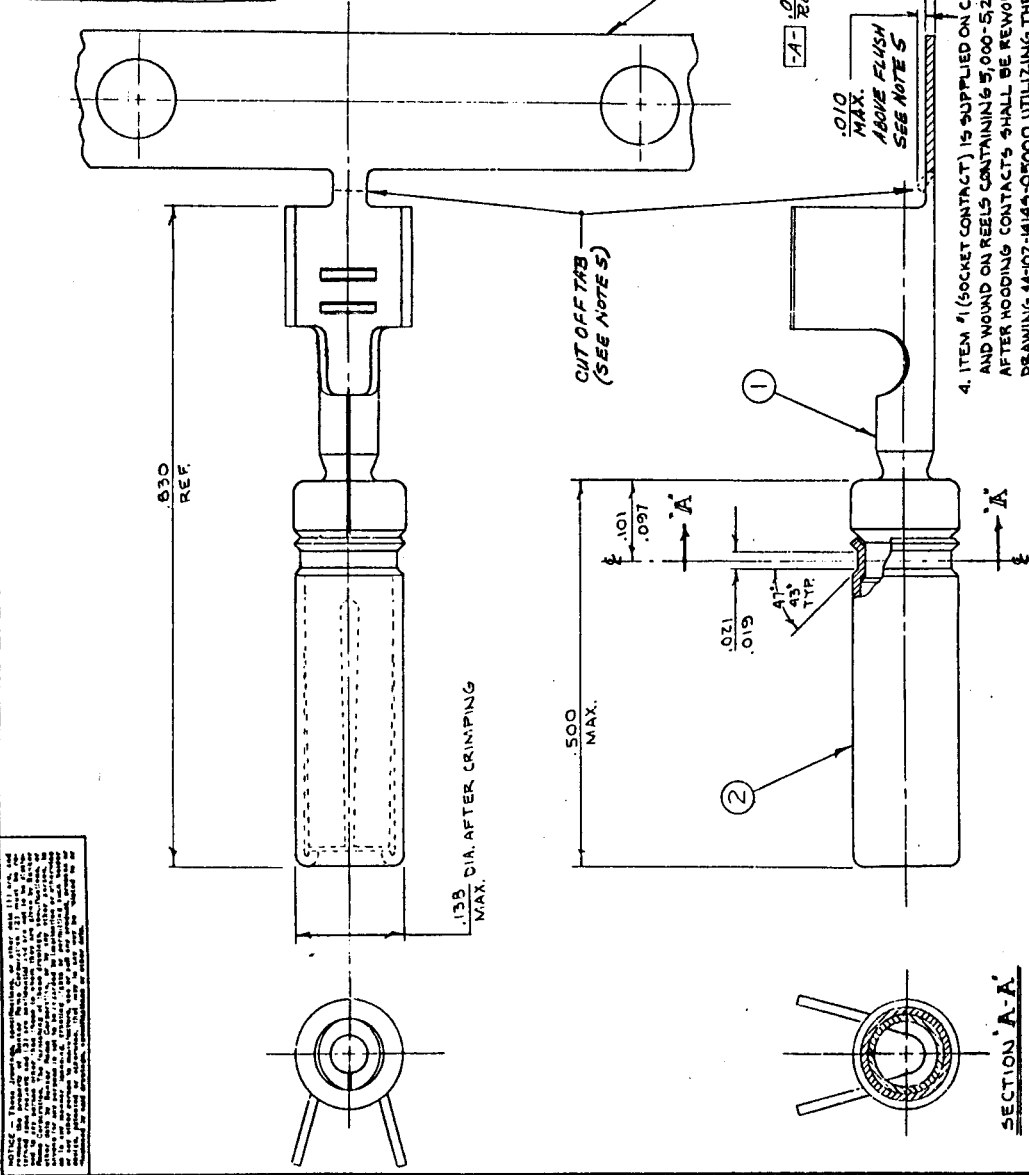




DOCUMENT CONTROL  
 14 JUL 88  
 RECEIVED

REV. NO.	DESCRIPTION	DATE	APPROVED
A	RELEASED TO PRODUCTION		
B	NOTE 3 ADDED ON 4/12/88	3-22-76	JM
C	NOTE 4 ADDED ON 4/12/88	3-22-76	JM
D	ADDED NOTE 5 CUT OFF DIM. ON 4/12/88	3-22-76	JM
E	REVISED AFTER ADDING SUPPORTS DIMENSIONS ON 4/12/88	3-22-76	JM
F	IN NOTE 3, "HOOD MAY ROTATE BUT NOT..." WAS... HOOD SHALL NOT ROTATE OR... ECN Y65026	3-22-76	JM



- NOTES:**
- AFTER CRIMPING HOOD (ITEM #2) IN PLACE, CONTACT SHALL BE CAPABLE OF MEETING THE FOLLOWING WITHDRAWAL FORCE REQUIREMENTS WHEN A STEEL TEST PIN IS INSERTED TO A DEPTH OF .250: THE TEST PIN MUST HAVE A SPHERICAL R. & SURFACE FINISH OF 7 TOV. 25 OZ. MAX. WITH .071 ± .0001 DIA. PIN. 5 OZ. MIN. WITH .075 ± .0001 DIA. PIN.
  - AFTER ASSEMBLY HOOD MAY ROTATE BUT NOT HAVE ANY LATERAL MOVEMENT: HOOD SHALL NOT SEPARATE FROM SOCKET CONTACT BODY WHEN SUBJECT TO A 15 LB. PULL.
  - ITEMS MANUFACTURED UNDER THIS PART NUMBER SHALL MEET THE QUALITY ASSURANCE REQUIREMENTS OF QAP 156.

**SECTION A-A**

4. ITEM #1 (SOCKET CONTACT) IS SUPPLIED ON CARRIER AND WOUND ON REELS CONTAINING 5,000-5250 PCS. AFTER HOODING CONTACTS SHALL BE REMOIND PER DRAWING 44-102-14149-05000 UTILIZING THE ORIGINAL PACKAGING MATERIALS. AFTER HOODING EACH REEL SHALL CONTAIN A MINIMUM OF 5,000 PCS.

5. DEFECTIVE CONTACTS DUE TO IMPAIRED ASSEMBLY OF HOOD SHALL BE REMOVED FROM THE CARRIER STRIP, EACH REEL ASSEMBLY (SEE DRAWING 44-102-14145-05000) SHALL HAVE NO LESS THAN 500 CONTACTS. THERE SHALL NOT BE MORE THAN 50 CONTACTS MISSING IN A ROL. CUT OFF TAB REMAINING ON THE CARRIER STRIP AFTER REMOIND CONTACTS SHALL BE FLUSH WITH THE CARRIER STRIP TO .010 MAX. ABOVE OR BELOW FLUSH.

SEE DRAWING 123-1591 FOR CARRIER DETAIL.

ITEM NO.	DESCRIPTION	QUANTITY	UNIT
1	44-100-14145	1	SOCKET CONTACT
2	44-101-1400-02	1	CONTACT HOOD

LIST OF MATERIALS OR PARTS LIST

AMPHENOL CONNECTOR DIVISION  
 BUNKER RAMO CORPORATION  
 BROADVIEW, ILLINOIS 60153

TITLE: SOCKET CONTACT ASSEMBLY  
 WIRE SIZE: #14 & #16 A.W.G.  
 INSULATION RANGE: .080/.125

SCALE: 10X  
 SHEET: 1 OF 1

APPROVED: [Signature]	DATE: 2-17-77
ENGINEERING: [Signature]	NO. 10258
INDUSTRIAL ENGINEERING: [Signature]	DESIGN ACTIVITY: 9-1-72
DESIGN: [Signature]	EXPERIMENTAL NO. 100-044-8110-01
MATERIAL: [Signature]	
FINISH: [Signature]	