

MICRO SWITCH

A DIVISION OF MINNEAPOLIS-HONEYWELL REGULATOR COMPANY
PRAIRIEVILLE, ALABAMA

FED. MFR. CODE 91929

SWITCH - BASIC

CATALOG LISTING

YA-2RBT

CATALOG LISTING
YA-2RBT
PAGE 1 OF 1
RELEASE NO. S.R.5450

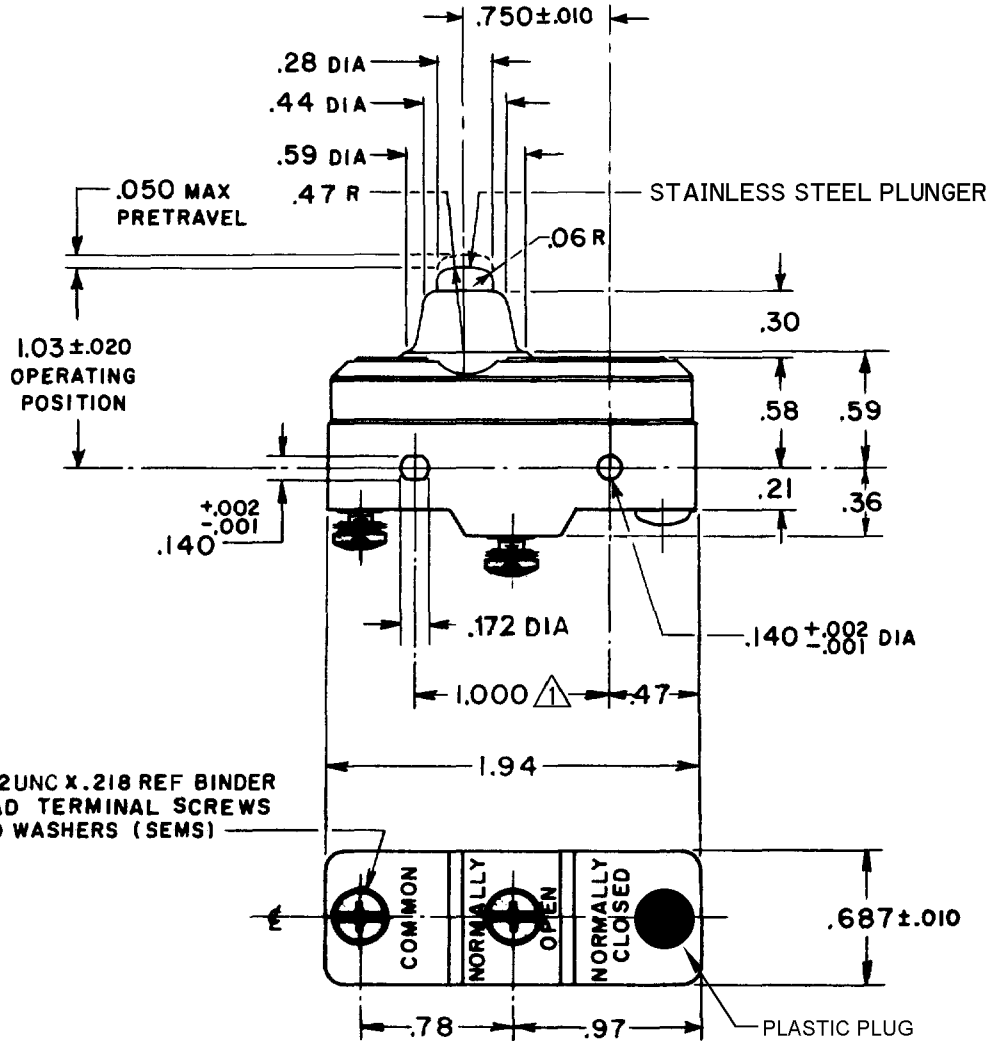
M
DRAWING NUMBER
8
ISSUE

REVISIONS

A	0034310		
K	P	20 DEC 74	
B	CO- 95750-B	18 JUL 91	
C	CO- 77568		
	K D R	29 MAR 94	
D	CO- 92159		
	C S L	21 JAN 98	
E	C093346		
	D L T	27 AUG 98	
F	CO- 95750-B		
	C S L	29 MAR 00	
G	0000624		
	J A H	23 JUN 03	

CNT 26 JUNE 96
JWH 26 JUNE 96
GCH 27 JUNE 96
CHECK 56

RASTER
DRAWN
K.A.F. 22 JUNE 56



6-32UNC X .218 REF BINDER HEAD TERMINAL SCREWS AND WASHERS (SEMS)

NOTE
△ MOUNTING HOLES WILL ACCEPT PINS OR SCREWS OF .139 MAX. DIA. ON 1.000 ± .002 CENTERS

THIS DRAWING COVERS A PROPRIETARY ITEM AND IS THE PROPERTY OF MICRO SWITCH, A DIVISION OF HONEYWELL. THIS DRAWING IS NOT TO BE COPIED OR USED WITHOUT THE APPROVAL OF MICRO SWITCH.

CHARACTERISTICS

OPERATING FORCE - - - - - 14 - 22 OZ.
RELEASE FORCE - - - - - 10 OZ. MIN.
DIFFERENTIAL TRAVEL - - - .002 - .0075
OVERTRAVEL - - - - - .094 MIN.

ELECTRICAL DATA

CONTACT ARRANGEMENT S.P.N.O.
L23 20A 125, 250 OR 480 VAC
10A 125 VAC "L"
1HP 125 VAC, 2HP 250 VAC
1/2A 125 VDC, 1/4A 250 VDC
L288 CE Ⓧ
L299
L308 20(3)A 250V ~ T85 5E4

SCALE - FULL

DO NOT SCALE PRINT

UNLESS OTHERWISE SPECIFIED
DIMENSIONS ARE IN INCHES
TOLERANCES ARE:
ONE PLACE (.0) ± .030
TWO PLACE (.00) ± .015
THREE PLACE (.000) ± .005
ANGLES ±

WEIGHT .064 LB.