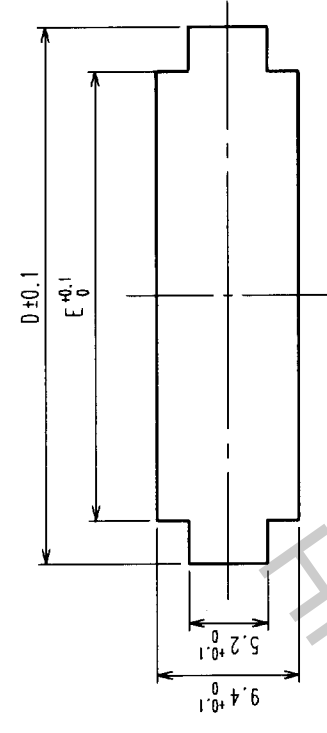
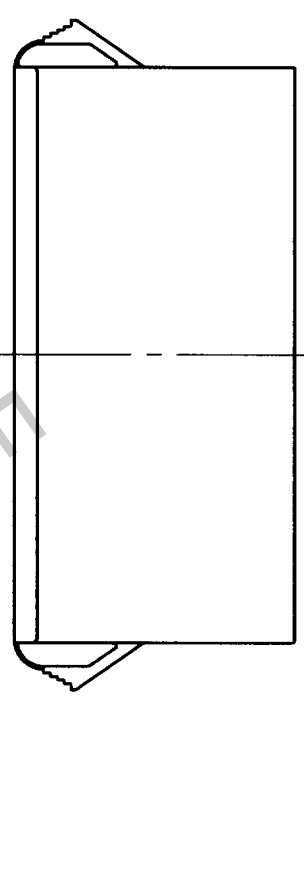
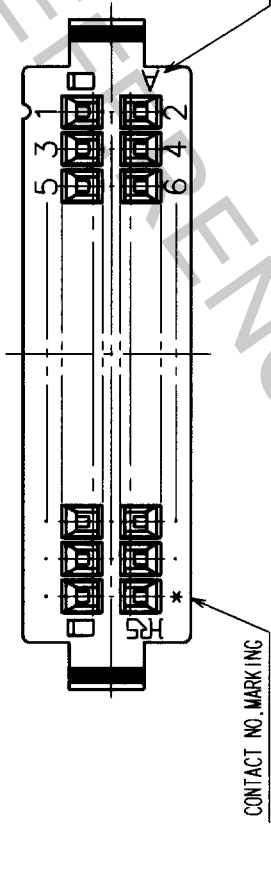
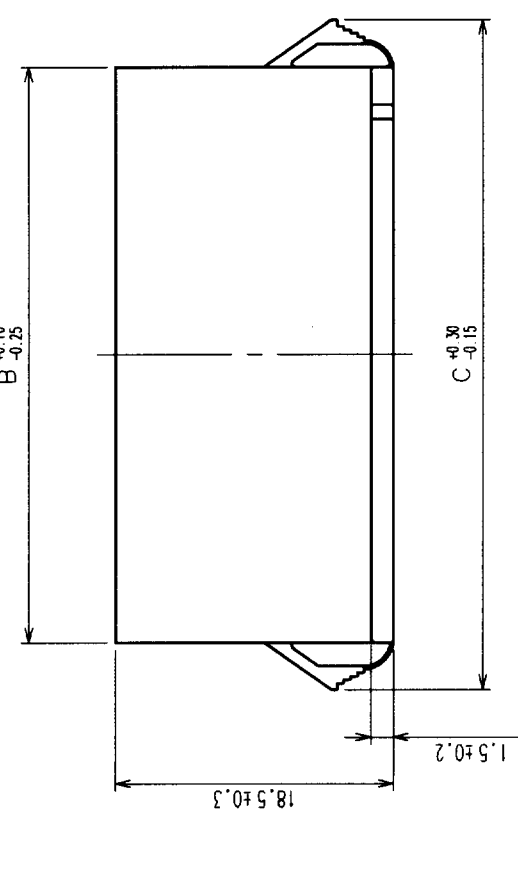
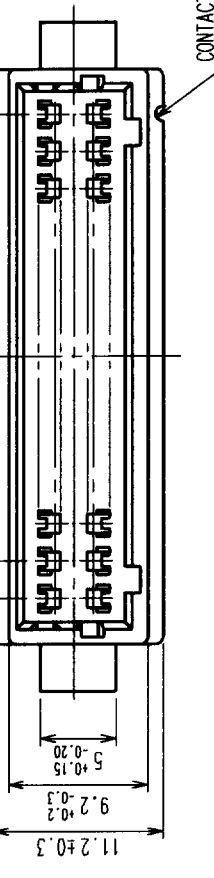


| COUNT | DESCRIPTION OF REVISIONS | BY | CHKD | DATE | COUNT | DESCRIPTION OF REVISIONS | BY | CHKD | DATE |
|-------|--------------------------|----|------|------|-------|--------------------------|----|------|------|
| △     |                          |    |      |      | △     |                          |    |      |      |
| △     |                          |    |      |      | △     |                          |    |      |      |
| △     |                          |    |      |      | △     |                          |    |      |      |



NOTE: WHEN YOU MOUNT DF1BA RELAY SOCKET ON A PANEL, PLEASE TAKE NOTE OF DIMENSIONS D, INDICATED IN THE TABLE ABOVE. BECAUSE THE CUT-OUT DIMENSION DEPENDS ON PANEL THICKNESS.  
THE PANEL CUT OUT SHALL BE FREE FROM BURR.

| 製品コード        | 製品名               | A    | B    | C    | PANEL CUT-OUT   |      |      |      |
|--------------|-------------------|------|------|------|-----------------|------|------|------|
|              |                   |      |      |      | PANEL THICKNESS |      |      |      |
|              |                   |      |      |      | D               | D    | E    |      |
| CL541-0719-7 | DF1BA-4DEP-2.5RC  | 2.5  | 8.6  | 15.0 | 12.7            | 13.4 | 14.1 | 8.8  |
| CL541-0720-6 | DF1BA-6DEP-2.5RC  | 5.0  | 11.1 | 17.5 | 15.2            | 15.9 | 16.6 | 11.3 |
| CL541-0721-9 | DF1BA-8DEP-2.5RC  | 7.5  | 13.6 | 20.0 | 17.7            | 18.4 | 19.1 | 13.8 |
| CL541-0722-1 | DF1BA-10DEP-2.5RC | 10.0 | 16.1 | 22.5 | 20.2            | 20.9 | 21.6 | 16.3 |
| CL541-0723-4 | DF1BA-12DEP-2.5RC | 12.5 | 18.6 | 25.0 | 22.7            | 23.4 | 24.1 | 18.8 |
| CL541-0724-7 | DF1BA-14DEP-2.5RC | 15.0 | 21.1 | 27.5 | 25.2            | 25.9 | 26.6 | 21.3 |
| CL541-0725-0 | DF1BA-16DEP-2.5RC | 17.5 | 23.6 | 30.0 | 27.7            | 28.4 | 29.1 | 23.8 |
| CL541-0726-2 | DF1BA-18DEP-2.5RC | 20.0 | 26.1 | 32.5 | 30.2            | 30.9 | 31.6 | 26.3 |
| CL541-0727-5 | DF1BA-20DEP-2.5RC | 22.5 | 28.6 | 35.0 | 32.7            | 33.4 | 34.1 | 28.8 |
| CL541-0728-8 | DF1BA-22DEP-2.5RC | 25.0 | 31.1 | 37.5 | 35.2            | 35.9 | 36.6 | 31.3 |
| CL541-0729-0 | DF1BA-24DEP-2.5RC | 27.5 | 33.6 | 40.0 | 37.7            | 38.4 | 39.1 | 33.8 |
| CL541-0730-0 | DF1BA-26DEP-2.5RC | 30.0 | 36.1 | 42.5 | 40.2            | 40.9 | 41.6 | 36.3 |
| CL541-0731-2 | DF1BA-28DEP-2.5RC | 32.5 | 38.6 | 45.0 | 42.7            | 43.4 | 44.1 | 38.8 |
| CL541-0732-5 | DF1BA-30DEP-2.5RC | 35.0 | 41.1 | 47.5 | 45.2            | 45.9 | 46.6 | 41.3 |
| CL541-0734-0 | DF1BA-34DEP-2.5RC | 40.0 | 46.1 | 52.5 | 50.2            | 50.9 | 51.6 | 46.3 |

|    |  |
|----|--|
| TO |  |
|    |  |
|    |  |

|                |                |                 |                  |           |                          |
|----------------|----------------|-----------------|------------------|-----------|--------------------------|
| NO.            | MATERIAL       | FINISH, REMARKS | NO.              | POLYAMIDE | NATURAL (WHITE) JUL94V-0 |
| CODE NO. (OLD) |                |                 |                  |           |                          |
| CL             |                |                 |                  |           |                          |
| DRAWN          | M. KURAMASHI   | DESIGNED        | T. Miyagaki      | CHECKED   | T. Miyagaki              |
|                | 03.07.14       |                 | 03.07.17         |           | 03.07.17                 |
|                |                |                 |                  |           |                          |
| DRAWING NO.    | EDC3-160043-01 | PART NO.        | DF1BA-*DEP-2.5RC | APPROVED  | T. Miyagaki              |
| SCALE          | 2 : 1          | CODE NO.        | CL541            | RELEASED  |                          |
| UNITS          | mm             |                 |                  |           |                          |