

詳細 D
DETAIL D
SCALE 5:1

注記 1. 材料 ハウジング : ガラス入り耐熱樹脂、白色、UL94V-0
MATERIAL HOUSING : G.F. HEAT RESISTANT PLASTIC, WHITE, UL94V-0
ターミナル : 燐青銅
TERMINAL : PHOSPHOR BRONZE
ネイル : 黄銅
NAIL : BRASS

2. めっき仕様
PLATING

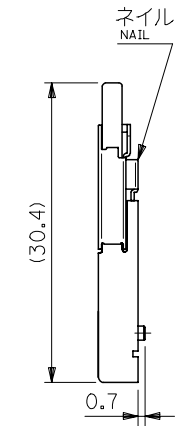
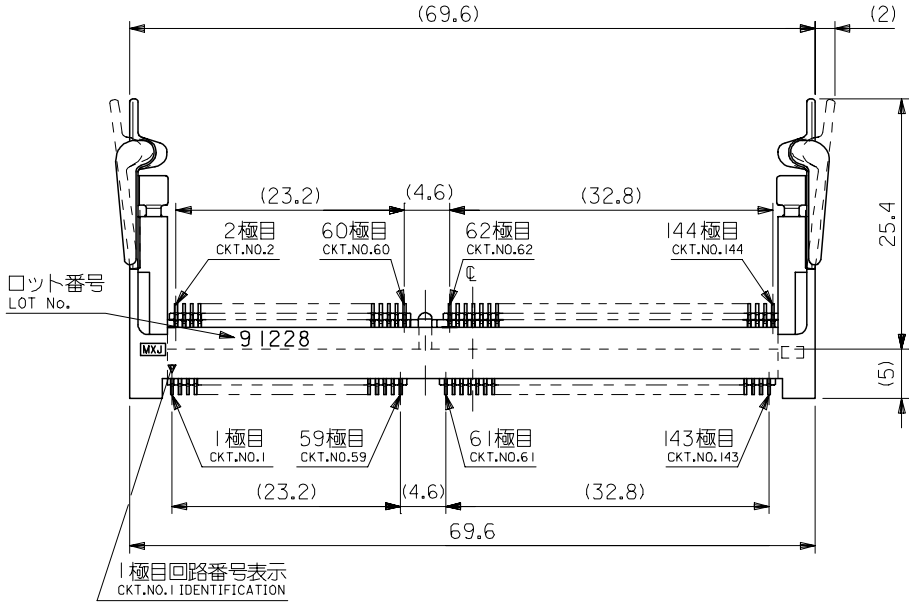
ロングターミナル
LONG TERMINAL
接点部 : 金めっき 0.25μmMIN.
CONTACT AREA : GOLD 0.25 MICROMETER MIN.
半田付け部 : 錫めっき 1.0μmMIN.
SOLDER TAIL AREA : TIN 1.0 MICROMETER MIN.
下地めっき : ニッケルめっき 2.0μmMIN.
UNDER-PLATING : NICKEL 2.0 MICROMETER MIN.

ショートターミナル
SHORT TERMINAL
接点部 : 金めっき 0.25μmMIN.
CONTACT AREA : GOLD 0.25 MICROMETER MIN.
半田付け部 : 錫めっき 1.0μmMIN.
SOLDER TAIL AREA : TIN 1.0 MICROMETER MIN.
下地めっき : ニッケルめっき 2.0μmMIN.
UNDER-PLATING : NICKEL 2.0 MICROMETER MIN.

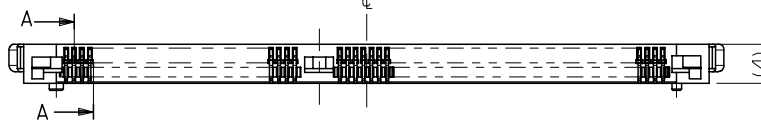
ネイル
NAIL
錫めっき : 1.0μmMIN.
TIN : 1.0 MICROMETER MIN.
下地めっき : ニッケルめっき 1.0μmMIN.
UNDER-PLATING : NICKEL 1.0 MICROMETER MIN.

3. テール平坦度は、0.1 MAX. とする。
TAIL COPLANARITY TO BE 0.1 MAX.
ネイル平坦度は、0.1 MAX. とする。
NAIL COPLANARITY TO BE 0.1 MAX.

4. 本製品は 54697-144* の鉛フリー品である。
THIS PRODUCT IS LEAD FREE OF 54697-144*.



1.75	2.85	1.35	3.25	4.05	***V	ハードトレイ (高さ9) HARD TRAY(HIGHT 9)	54697-7008		
						ハードトレイ (高さ11) HARD TRAY(HIGHT 11)	54697-7005		
						標準トレイ NORMAL TRAY	54697-7002		
3.25	1.35	2.85	1.75	5.55	5.0V	ハードトレイ (高さ9) HARD TRAY(HIGHT 9)	54697-7007		
						ハードトレイ (高さ11) HARD TRAY(HIGHT 11)	54697-7004	54697-700*	144
						標準トレイ NORMAL TRAY	54697-7001		
2.5	2.1	2.1	2.5	4.8	3.3V	ハードトレイ (高さ9) HARD TRAY(HIGHT 9)	54697-7006		
						ハードトレイ (高さ11) HARD TRAY(HIGHT 11)	54697-7003		
						標準トレイ NORMAL TRAY	54697-7000		
E	D	C	B	A	POWER SUPPLY	梱包トレイ PACKAGING TRAY	MATERIAL NO.	MODEL NO.	CKT.



MATERIAL 材料
注記参照
SEE NOTES

FINISH 仕上げ
注記参照
SEE NOTES

REVISED EC NO: J2007-0519 DRW:KSAIT001 CHK:D:THARUYAMA APPR:NUKITA	2006/08/25	2006/08/25	2006/09/04	DESCRIPTION A	GENERAL TOLERANCES (UNLESS SPECIFIED)		DIMENSION STYLE MM ONLY		SCALE 2:1	DESIGN UNITS METRIC	THIRD ANGLE PROJECTION	
	10 UNDER		±0.2		DRAWN BY Y.WADA	DATE 2004/05/14	TITLE 0.8MM PITCH S.O.DIMM SOCKET 144CKT H=4 -LEAD FREE-					
	10 OVER 30 UNDER		±0.25		CHECKED BY M.SASAO	DATE 2004/05/14	APPROVED BY M.SASAO 2004/05/14					
	30 OVER		±0.3		APPROVED BY M.SASAO 2004/05/14		MATERIAL NO. SEE CHART		DOCUMENT NO. SD-54697-004	SHEET NO. 1 OF 3		
ANGULAR ±3 °					DRAFT WHERE APPLICABLE MUST REMAIN WITHIN DIMENSIONS		SIZE A3		THIS DRAWING CONTAINS INFORMATION THAT IS PROPRIETARY TO MOLEX INCORPORATED AND SHOULD NOT BE USED WITHOUT WRITTEN PERMISSION			

10 9 8 7 6 5 4 3 2 1

F F

E E

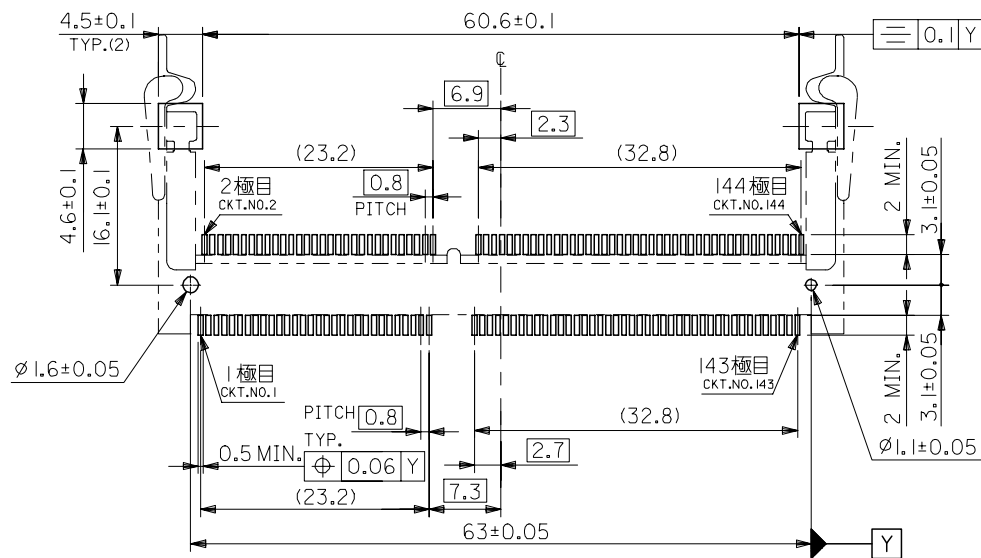
D D

C C

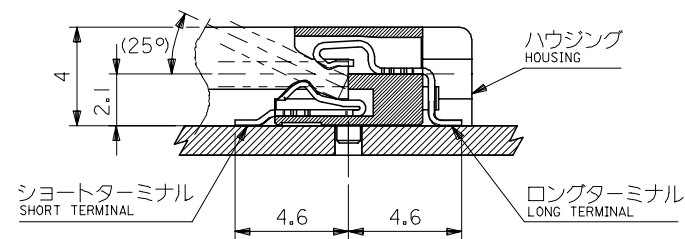
B B

A A

10 9 8 7 6 5 4 3 2 1



推奨基板寸法
RECOMMENDED PCB PATTERN LAYOUT
(THK: 1.2 ± 0.1)



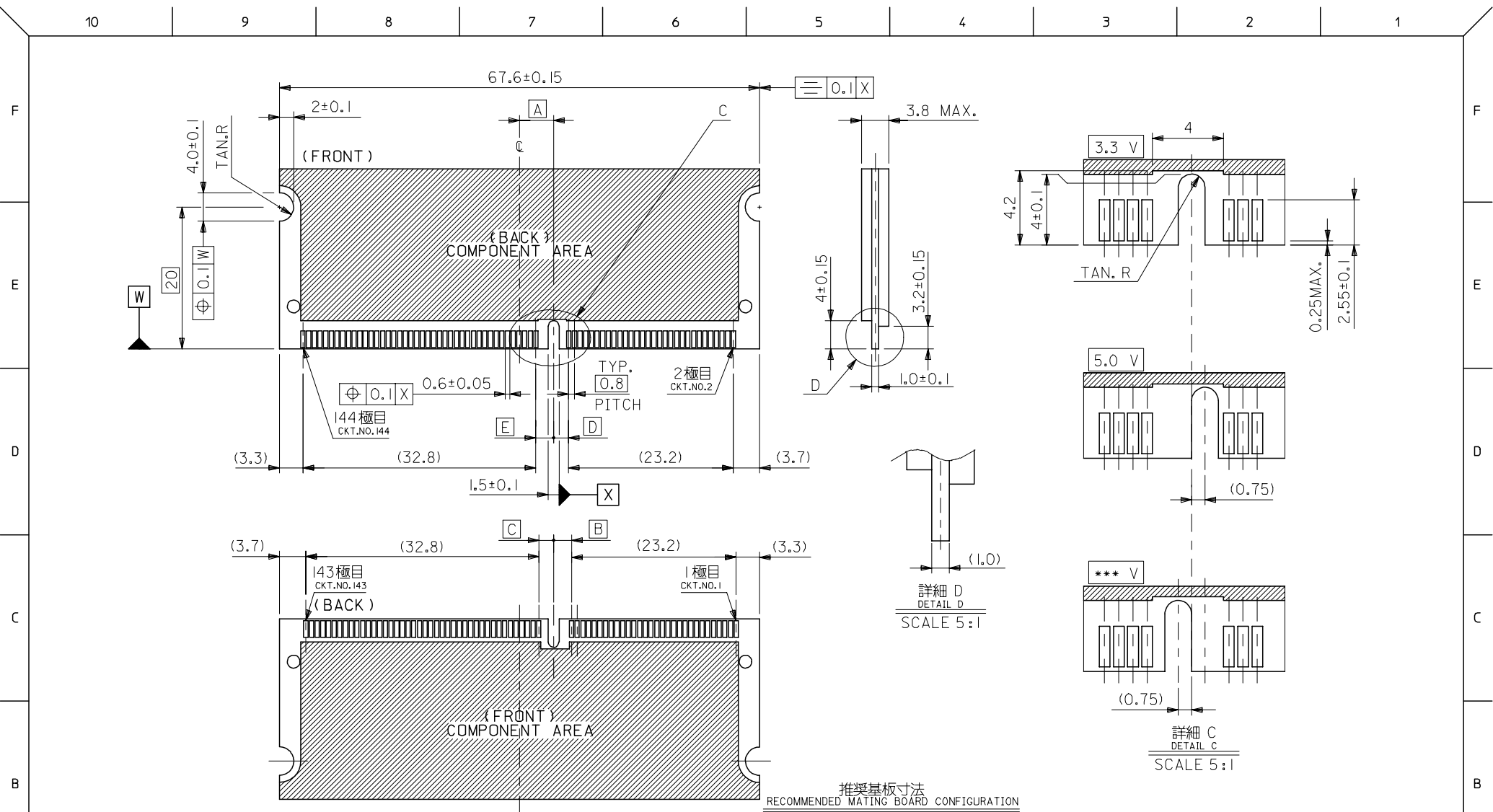
断面 A-A
SECTION A-A
SCALE 5:1

MODEL NO. 54697-700*

MATERIAL 材料
注記参照
SEE NOTES

FINISH 仕上げ
注記参照
SEE NOTES

REVISED EC NO: J2007-0519 DRWNG: SALT001 CHKD: THARUYAMA APPR: NUKITA	DESCRIPTION GENERAL TOLERANCES (UNLESS SPECIFIED)	10 UNDER	± 0.2	DRAWN BY Y. WADA	DATE 2004/05/14	TITLE 0.8MM PITCH S.O.DIMM SOCKET 144CKT H=4 -LEAD FREE-
		10 OVER 30 UNDER	± 0.25	CHECKED BY M. SASAO	DATE 2004/05/14	MOLEX INCORPORATED
		30 OVER	± 0.3	APPROVED BY M. SASAO	DATE 2004/05/14	
		ANGULAR	± 3 °	MATERIAL NO. SEE SHEET 1 OF 3	DOCUMENT NO. SD-54697-004	SHEET NO. 2 OF 3
A	DRAFT WHERE APPLICABLE MUST REMAIN WITHIN DIMENSIONS	THIS DRAWING CONTAINS INFORMATION THAT IS PROPRIETARY TO MOLEX INCORPORATED AND SHOULD NOT BE USED WITHOUT WRITTEN PERMISSION				



推奨基板寸法
RECOMMENDED MATING BOARD CONFIGURATION
(THK: 1.0±0.1)

MATERIAL 材料	注記参照 SEE NOTES
FINISH 仕上げ	注記参照 SEE NOTES

REVISED EC NO: J2007-0519 DRW:KSAIT001 CHK:D:THARUYAMA APPR:NUKITA	DESCRIPTION	GENERAL TOLERANCES (UNLESS SPECIFIED)	DIMENSION STYLE MM ONLY	SCALE 2:1	DESIGN UNITS METRIC	MODEL NO. 54697-700*
	10 UNDER	± 0.2	DRAWN BY Y. WADA	DATE 2004/05/14	TITLE 0.8MM PITCH S.O.DIMM SOCKET 144CKT H=4 -LEAD FREE-	THIRD ANGLE PROJECTION
	10 OVER 30 UNDER	± 0.25	CHECKED BY M. SASAO	DATE 2004/05/14	MOLEX MOLEX INCORPORATED	
	30 OVER	± 0.3	APPROVED BY M. SASAO	DATE 2004/05/14		DOCUMENT NO. SD-54697-004
	ANGULAR	± 3 °	DRAFT WHERE APPLICABLE MUST REMAIN WITHIN DIMENSIONS	MATERIAL NO. SEE SHEET 1 OF 3	SHEET NO. 3 OF 3	
SIZE A3	THIS DRAWING CONTAINS INFORMATION THAT IS PROPRIETARY TO MOLEX INCORPORATED AND SHOULD NOT BE USED WITHOUT WRITTEN PERMISSION					