

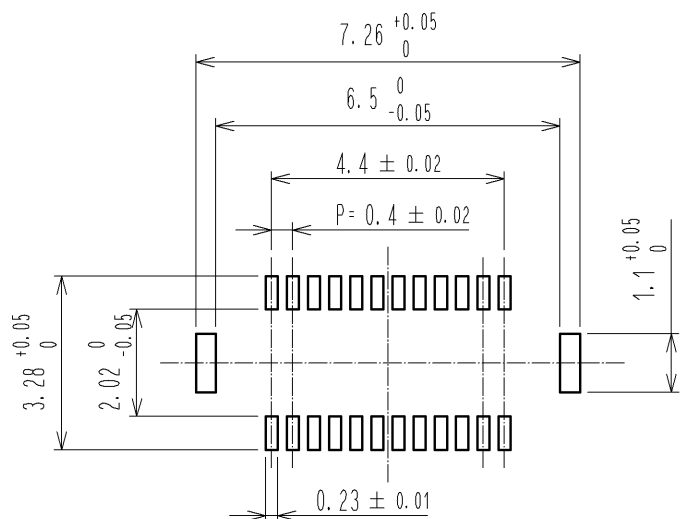
NOTE 1. ALL LEADS CO-PLANARITY SHALL BE 0.1 mm MAX.

2 CONTACT PLATING SPECIFICATIONS.  
 CONTACT AREA : GOLD 0.05 μm MIN  
 SMT LEAD : GOLD 0.05 μm MIN  
 UNDER PLATING : NICKEL 1 μm MIN  
 (SURFACE : SEALING)

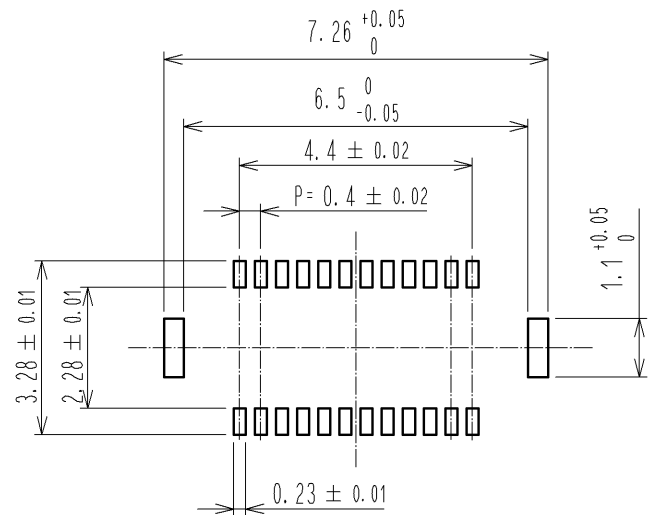
3 METAL HOLD DOWN PLATING SPECIFICATIONS.  
 MOUNTING AREA : GOLD 0.05 μm MIN  
 UNDERPLATING : NICKEL 1 μm MIN

3	PHOSPHOR BRONZE	3	7	PS	CLEAR. REINFORCING COLLAR
2	PHOSPHOR BRONZE	2	6	PS	BLACK. PLASTIC REEL
1	LCP	BLACK. UL94V-0	5	POLYESTER	CLEAR. COVER TAPE
			4	PS	CLEAR. EMBOSSED CARRIER TAPE
NO.	MATERIAL	FINISH . REMARKS	NO.	MATERIAL	FINISH . REMARKS
UNITS mm		SCALE 10:1	COUNT 	DESCRIPTION OF REVISIONS	
DESIGNED		CHECKED		DATE	
APPROVED : KH. IKEDA			13.07.01		
CHECKED : TS. MIYAZAKI			13.07.01		
DESIGNED : YK. SATAKE			13.07.01		
DRAWN : KR. AJITO			13.06.28		
DRAWING NO.		EDC3-319637-03			
PART NO.		DF37NB-24DS-0.4V(53)			
CODE NO.		CL684-3304-4-53			

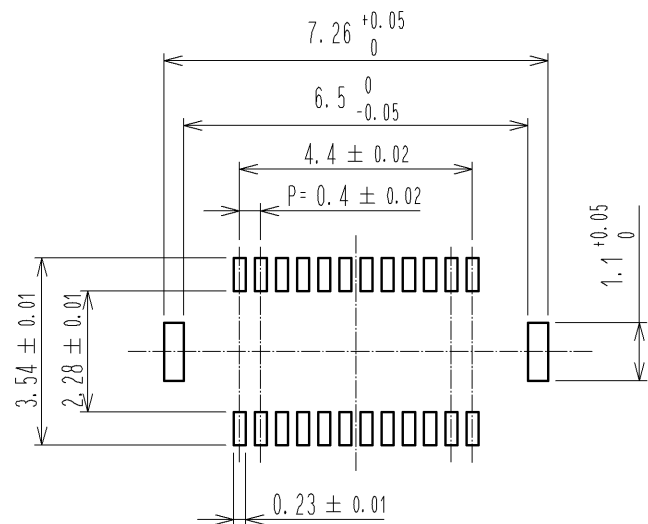
◆ RECOMMENDED PCB LAYOUT(MOUNTING SURFACE SIDE)



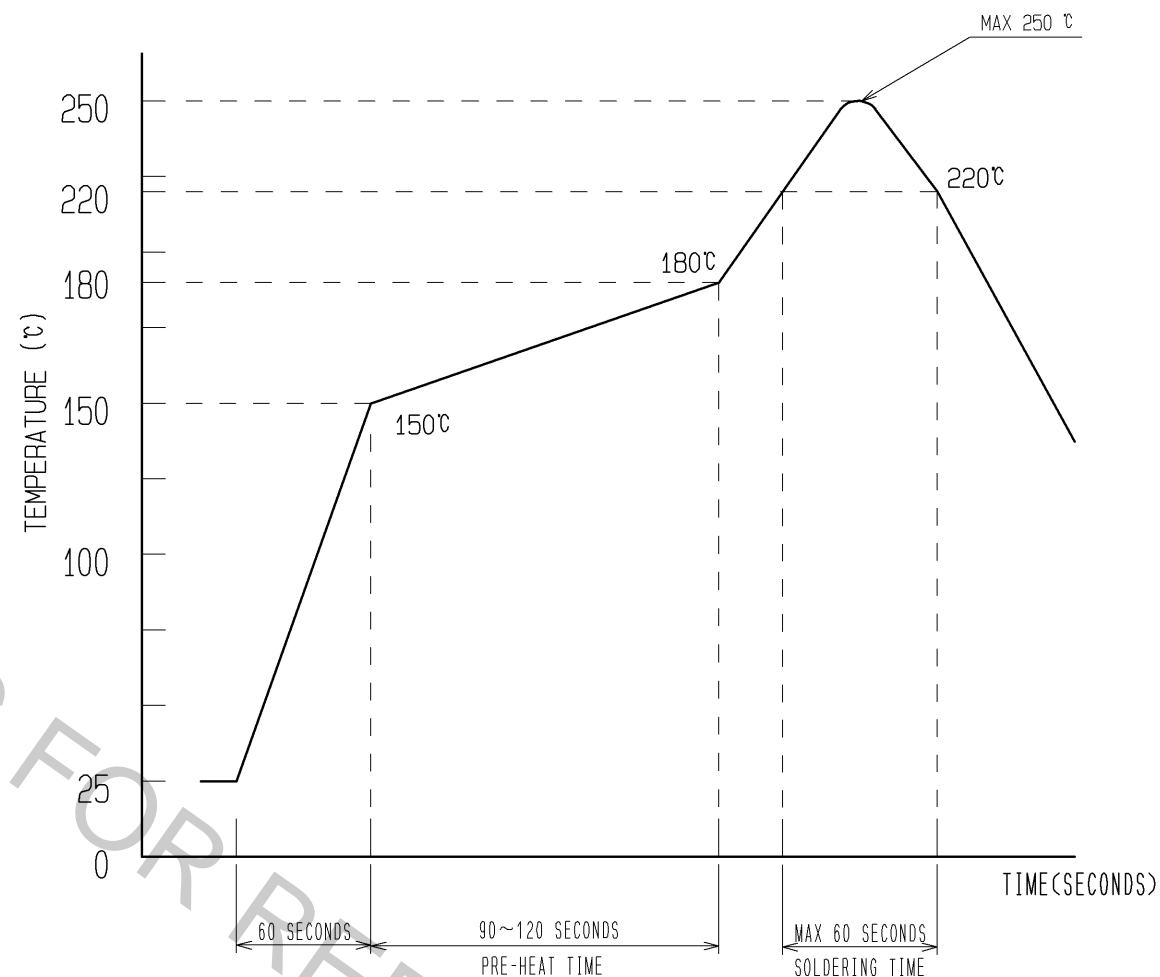
◆ RECOMMENDED METAL MASK DIMENSIONS  
METAL MASK THICKNESS : 0.12mm



◆ RECOMMENDED METAL MASK DIMENSIONS  
METAL MASK THICKNESS : 0.1mm



4 RECOMMENDED REFLOW TEMPERATURE PROFILE USING LEAD-FREE SOLDER PASTE.



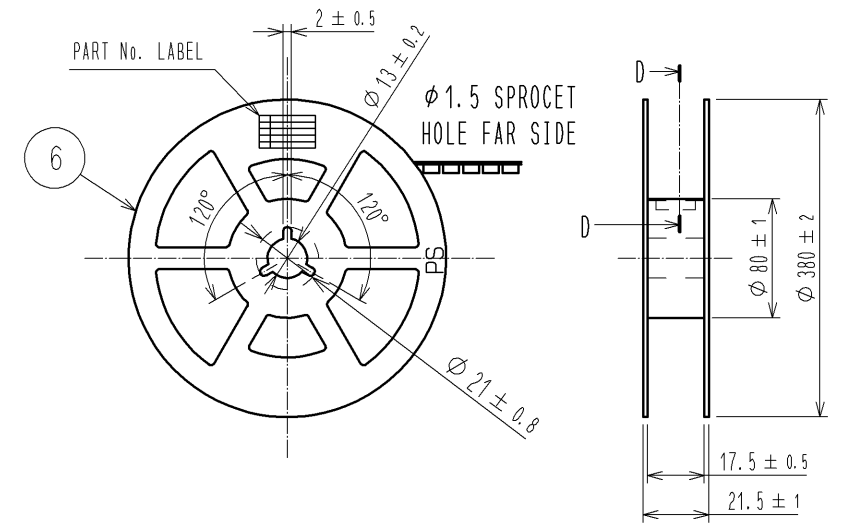
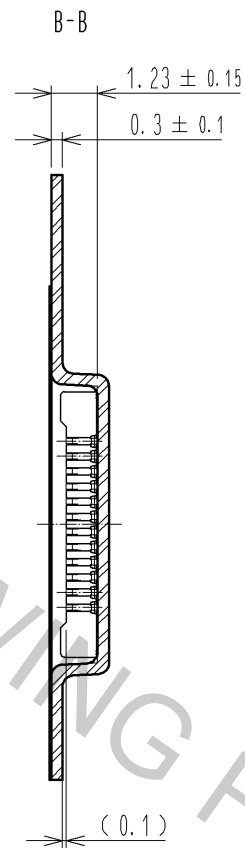
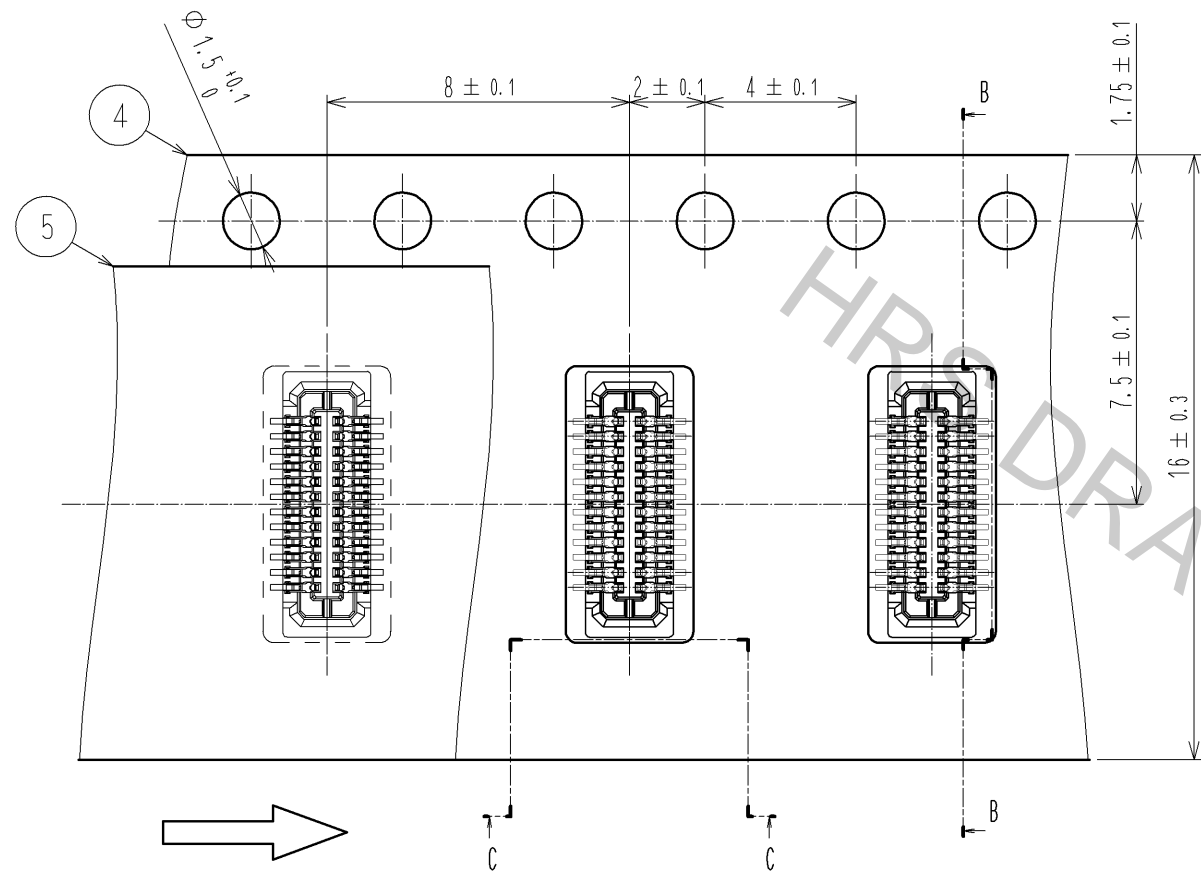
- 1) REFLOW TIME  
REFLOW METHOD: IR REFLOW  
NUMBER OF REFLOW CYCLES: 2 CYCLES MAX.  
DURATION ABOVE 220 °C, 60 SEC. MAX.  
(PEAK TEMPERATURE: 250°C MAX.)
- 2) PRE-HEAT TIME  
PRE-HEAT TEMPERATURE(MIN) :150 °C  
PRE-HEAT TEMPERATURE(MAX) :180 °C  
PRE-HEAT TIME : 90~120 sec.

4 THIS TEMPERATURE PROFILE IS PER THE CONDITIONS SHOWN ABOVE. ADDITIONAL FACTORS, SUCH AS SOLDER PASTE TYPE, PCB SIZE AND OTHER MOUNTED COMPONENTS COULD AFFECT THE PROFILE. THEREFORE, A THOROUGH EVALUATION OF MOUNTING CONDITION IS REQUIRED PRIOR TO PRODUCTION. TEMPERATURE IS MEASURED AT CONTACT LEAD.

<b>HRS</b>	DRAWING NO.	EDC3-319637-03
	PART NO.	DF37NB-24DS-0.4V(53)
	CODE NO.	CL684-3304-4-53
		△ 2/3

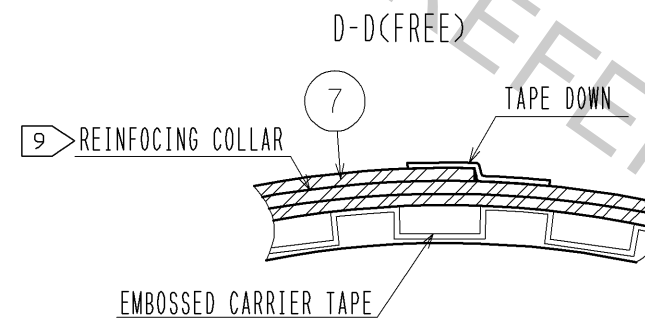
EMBOSSED CARRIER TAPE PACKAGING (5:1)

STYLE AND DIMENSION OF REEL (FREE SIZE)

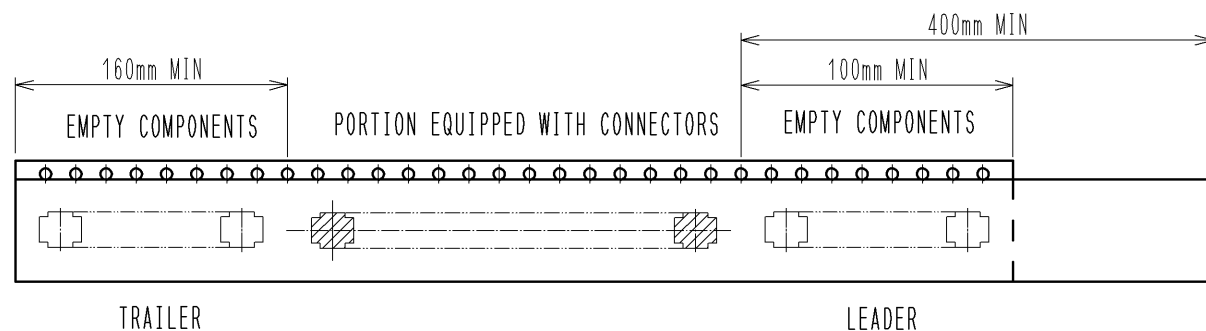
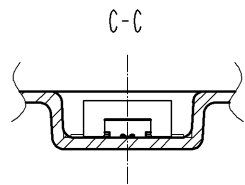


8 DETEIL OF PART NO. LABEL

SUPPLIER	
QUANTITY	
PART NO.	
CODE NO.	
DATE OF MANUFACTURED	
製造年月日	年 月 日
製品コード	CL684-3304-4-53
製品名	DF37NB-24DS-0.4V(53)
数量	1000個
納入者	ヒロセ電機(株)



DIRECTION OF UNREELING



NOTES 5. PER REEL 1000 CONNECTORS.

6. THE DIMENSIONS IN PARENTHESES ARE FOR REFERENCE.

7 REFER TO JIS C 0806(IEC 60286-3)(PACKING OF COMPONENTS FOR AUTOMATIC HANDLING)

8 DETAIL OF PART NO. LABEL IS WRITTEN IN JAPANESE.

9 AFTER FINISHING THE REELING, COVER THE SURFACE WITH 2 METERS OF REINFORCING COLLAR AND THE DOWN AT THE END.

<b>HRS</b>	DRAWING NO.	EDC3-319637-03
	PART NO.	DF37NB-24DS-0.4V(53)
	CODE NO.	CL684-3304-4-53
		△ 3/3