



Features

- Formerly J. W. Miller® model
- Current rating up to 3.71 A
- Inductance range: 1 μ H to 1000 μ H
- RoHS compliant*



This series is currently available but not recommended for new designs. The **Model RLB0913 Series** is the recommended alternative.

RL822 Series - Radial Lead RF Choke

Electrical Specifications (@ 25 °C)

Part Number	Inductance (μ H)	Tol.	Q	Test Frequency		SRF (MHz) Min.	DCR (Ω) Max.	I dc (A)
				L	Q			
RL822-1R0K-RC	1.0	± 10 %	20	1.0 KHz	7.96 MHz	150	0.013	3.71
RL822-1R5K-RC	1.5	± 10 %	20	1.0 KHz	7.96 MHz	130	0.016	3.32
RL822-2R2K-RC	2.2	± 10 %	20	1.0 KHz	7.96 MHz	100	0.021	3.15
RL822-3R3K-RC	3.3	± 10 %	20	1.0 KHz	7.96 MHz	79	0.025	2.66
RL822-4R7K-RC	4.7	± 10 %	20	1.0 KHz	7.96 MHz	51	0.030	2.27
RL822-6R8K-RC	6.8	± 10 %	20	1.0 KHz	7.96 MHz	29	0.035	2.10
RL822-100K-RC	10	± 10 %	50	1.0 KHz	2.52 MHz	14	0.045	1.96
RL822-120K-RC	12	± 10 %	50	1.0 KHz	2.52 MHz	13	0.050	1.82
RL822-150K-RC	15	± 10 %	40	1.0 KHz	2.52 MHz	12	0.058	1.75
RL822-180K-RC	18	± 10 %	40	1.0 KHz	2.52 MHz	11	0.061	1.54
RL822-220K-RC	22	± 10 %	40	1.0 KHz	2.52 MHz	9.2	0.070	1.29
RL822-270K-RC	27	± 10 %	30	1.0 KHz	2.52 MHz	8.5	0.080	1.22
RL822-330K-RC	33	± 10 %	30	1.0 KHz	2.52 MHz	7.8	0.090	1.17
RL822-390K-RC	39	± 10 %	30	1.0 KHz	2.52 MHz	6.9	0.10	1.14
RL822-470K-RC	47	± 10 %	30	1.0 KHz	2.52 MHz	6.5	0.17	0.79
RL822-560K-RC	56	± 10 %	30	1.0 KHz	2.52 MHz	5.4	0.20	0.76
RL822-680K-RC	68	± 10 %	30	1.0 KHz	2.52 MHz	4.9	0.22	0.70
RL822-820K-RC	82	± 10 %	30	1.0 KHz	2.52 MHz	4.1	0.25	0.67
RL822-101K-RC	100	± 10 %	20	1.0 KHz	796 KHz	3.7	0.28	0.58
RL822-121K-RC	120	± 10 %	20	1.0 KHz	796 KHz	3.4	0.32	0.56
RL822-151K-RC	150	± 10 %	20	1.0 KHz	796 KHz	3.2	0.54	0.42
RL822-181K-RC	180	± 10 %	20	1.0 KHz	796 KHz	2.8	0.60	0.40
RL822-221K-RC	220	± 10 %	20	1.0 KHz	796 KHz	2.7	0.68	0.38
RL822-271K-RC	270	± 10 %	20	1.0 KHz	796 KHz	2.4	0.80	0.35
RL822-331K-RC	330	± 10 %	20	1.0 KHz	796 KHz	2.3	0.90	0.33
RL822-391K-RC	390	± 10 %	20	1.0 KHz	796 KHz	2.1	1.20	0.28
RL822-471K-RC	470	± 10 %	20	1.0 KHz	796 KHz	1.9	1.37	0.25
RL822-561K-RC	560	± 10 %	20	1.0 KHz	796 KHz	1.8	1.53	0.23
RL822-681K-RC	680	± 10 %	20	1.0 KHz	796 KHz	1.6	2.00	0.21
RL822-821K-RC	820	± 10 %	20	1.0 KHz	796 KHz	1.5	2.70	0.18
RL822-102K-RC	1000	± 10 %	50	1.0 KHz	252 KHz	1.3	2.96	0.16

General Specifications

Rated Current..... Inductance drop 10 %
 Operating Temperature-55 °C to +105 °C
 Storage Temperature-55 °C to +105 °C

Materials

Core Material..... Ferrite
 Wire Enameled copper
 Terminal Coating..... Sn

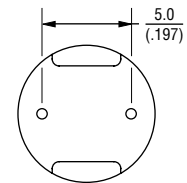
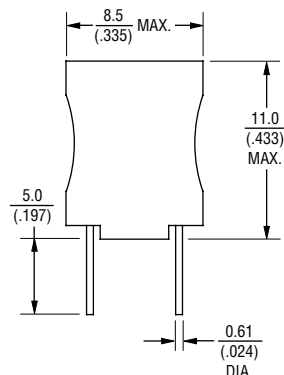
Marking

..... Value code on side of inductor

Packaging

Standard..... 100 pcs. per bag

Product Dimensions



DIMENSIONS: $\frac{\text{MM}}{\text{(INCHES)}}$

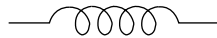
How To Order

RL822 - 102K - RC

Model _____
 Value/Tolerance Code (see table) _____
 Compliance Code _____
 RC = RoHS Compliant

Example:
 RL822-102K-RC = 1000 μ H, ± 10 %

Electrical Schematic



REV. 04/17

*RoHS Directive 2002/95/EC Jan. 27, 2003 including annex and RoHS Recast 2011/65/EU June 8, 2011. Specifications are subject to change without notice.

The device characteristics and parameters in this data sheet can and do vary in different applications and actual device performance may vary over time. Users should verify actual device performance in their specific applications.