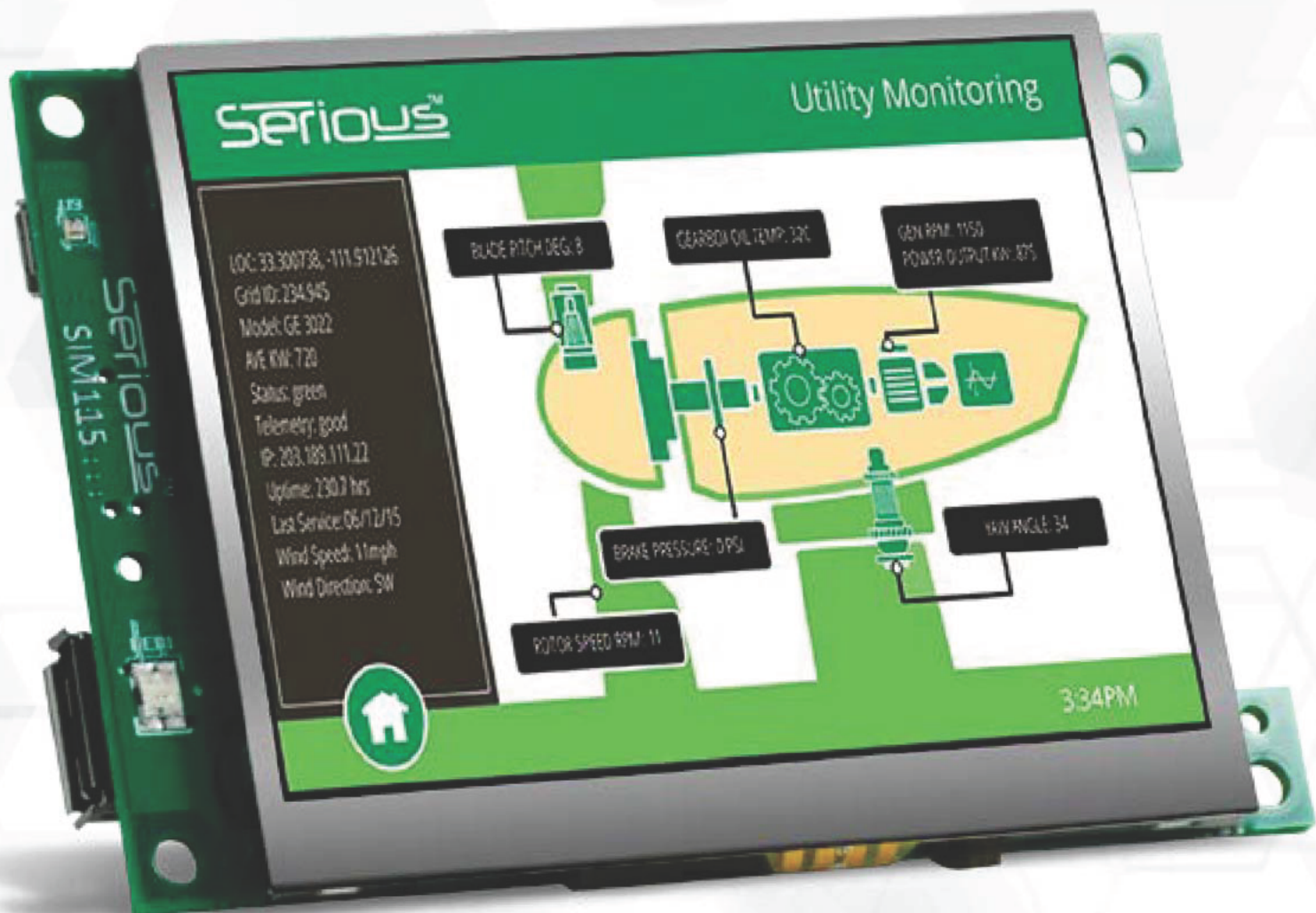


SIM115

SIM115 3.5" QVGA Graphic/Touch Module Family



Powered by the



Professional 3.5" GUI Performance

With a large, bright 3.5" 320x240 LCD screen and powered by a 100MHz Renesas RX63-series MCU with Serious Gatling™ Technology for rapid-fire pixel delivery, proximity and ambient light sensing, the SIM115 can deliver an outstanding front control panel experience for your product.

Power, UART, SPI, and I2C connectivity is provided by a wire-harness-friendly 16-pin connector perfect for simple attachment to existing systems. Or use the 60-pin low profile board-to-board header for custom daughter-card development and more complex connectivity including USB host and device.

SIM115 is an Extended Lifetime Roadmap Product and is fully supported by the SHIP rapid GUI development and deployment system.

Family Highlights

3.5" Bright, Large QVGA 320x240 color TFT display

- Serious Gatling™ Technology accelerated
- Various touch options
- Ambient light sensing
- Touch proximity sensing
- Various LCD options, including Multi-Viewing Angle

100MHz 32-bit Renesas RX63N/RX631 MCU

- 128kB RAM, up to 768kB FLASH

On Module Memory

- 8MB or 16MB SDRAM
- 8MB or 16MB Serial FLASH + 4Kbit EEPROM

Extensive I/O

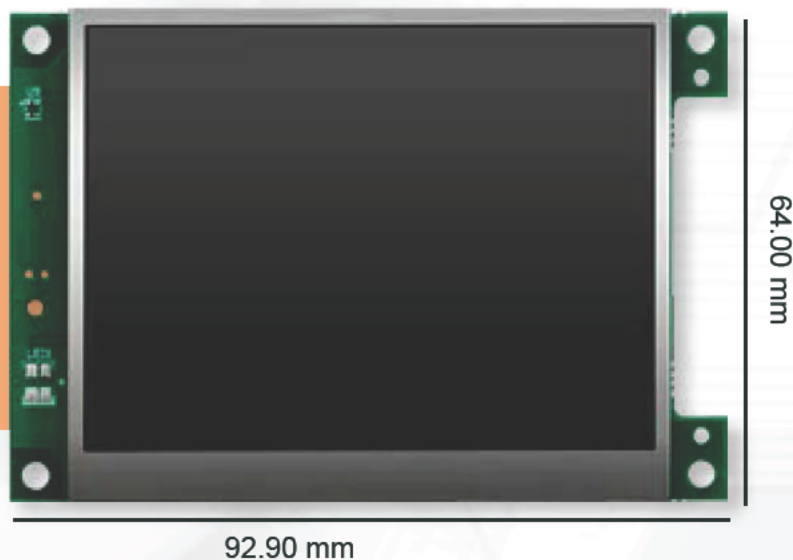
- 60-pin Board-to-Board I/O Expansion (Power, GPIO, CAN, UART, I2C, I2S, SPI, USB Host, Device...)
- 16-pin Wire Harness Expansion (Power, UART, I2C, I2S, SPI,...)
- USB 2.0 FS Embedded Host
- USB 2.0 FS Device
- SHIP Programming Port
- Tag-Connect TC2070 JTAG

Wide Operating Range

- -20 to +70°C extended operating temperature
- 3.6 to 5.50 VDC Input Power

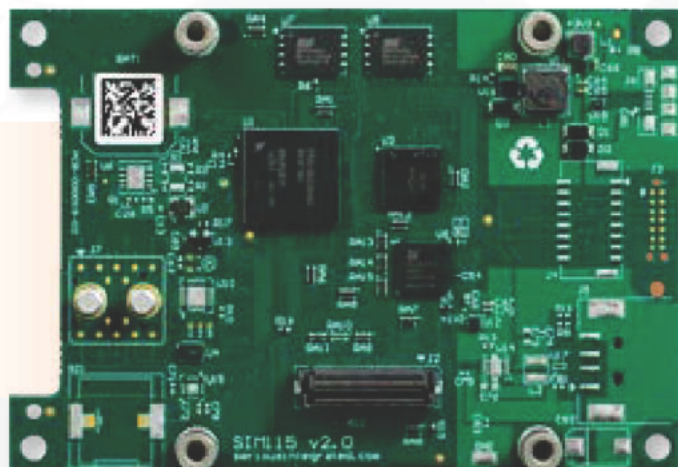
Update your product's front panel with *Serious* modules:

- ✓ Production worthy
- ✓ Prototype friendly
- ✓ Rapid GUI development



Product Options

Product Options to fit your feature, performance and cost targets



Family Variants

	A01	A02	A03	A04
MCU RX Family	63N		631	
MCU FLASH (KB)	768		512	
MCU RAM (KB)	128			
SDRAM/Serial FLASH (MB)	16/16		8/8	
LCD Touch	R4		R4	
Serious Gatling™ Technology	●	●	●	●
Ambient Light Sensing	●	●	●	●
16-Pin Wire-to-Board Power/I/O Connector	●	●	●	●
Tag-Connect JTAG	●	●	●	●
SHIP Programming Connector	●	●	●	●
60-pin serial/power expansion	●	●	●	●
USB2.0 FS Device circuitry	●	●	●	●
USB2.0 FS Device Micro B	●			
USB2.0 FS 150mA Host A	●			
Piezo Sounder	●			
RTCC w/Battery Backup	●			
PCB Temp Sensor		MCU		
RMI on 60-Pin	●			
Front LED	●			

LCD Options

	R45ALL	N55ALL
Size	3.5" Diagonal Active	
Resolution (WxH)	320x240	
Touch	R4	
NITs	400+	500+
Backlight Life (Hour)	50k	
Viewing Technology	Land	
Color Depth (bits)	24	
Temp Range (°C)	-20/+70	

Visit www.seriousintegrated.com/SIM115 for complete, up-to-date variants.

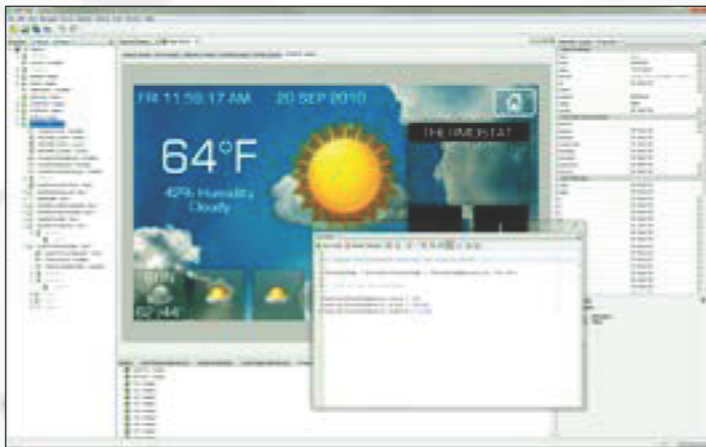
Building a GUI is easy when you get **SERIOUS™**

Develop your GUI using the **Serious Human Interface™ Platform** for professional results in a fraction of the time of traditional coded development.

Fast GUI Development with SHIP

Are you looking for a comprehensive PC-based WYSIWYG rapid-GUI development environment with minimal coding? Use the Serious Human Interface Platform (SHIP) to create a complete, communicating and functioning GUI in just *hours*.

See seriousintegrated.com/SHIP for more details.



Serious Communications Modules

Serious offers numerous communications daughter cards for Serious Integrated Modules to help complete your hardware design in connected environments, including CAN, RS232, RS485, WiFi, Bluetooth, Ethernet and more.

[Serious Communications Modules](#) (SCM117, SCM118 and SCM208, sold separately) dock into the back of 3rd and 4th Generation SIMs, providing connectivity, 9-25VDC to 5VDC power conversion for the SCM and SIM and an optional on-board OEM programmable 32-bit MCU for custom protocol conversion between your OEM system and the SIM.

Development Kits

Purchase a SIM115-A01-DEV-01 development kit today, which contains everything you need to start working with SIM231, including:

- SIM115-A01-R45ALL module
- Acrylic demo enclosure
- Sample 16-pin cable
- SHIP Programming Adapter 200 (SPA200) Kit

Partner Support

Serious is a Renesas Platinum Partner. Serious Integrated Modules are supported with software and services from Renesas and Serious strategic partners.



Micrium®



IAR SYSTEMS

Ordering Information

Visit www.seriousintegrated.com/buy for ordering information, or contact an authorized Serious distributor:



Need More Information?

Contact your local *Serious* Representative or contact your Arrow Electronics Applications Engineer.

Visit seriousintegrated.com/SIM115 for

- Ordering information
- Mechanical Design Package (MDP)
- Technical Reference Manual (TRM)
- Schematics and more

Visit the *Serious* community at mySerious.com

SERIOUS INTEGRATED, INC. ("SERIOUS") assumes no liability whatsoever, and SERIOUS disclaims any warranties whether express or implied, written, oral, statutory or otherwise related to the information herein and its use, included any liability for warranties relating to fitness for a particular purpose, performance, quality, merchantability or noninfringement of any intellectual property right. Buyer is responsible for determining the suitability of SERIOUS products for the intended application and that applicable specifications are met. SERIOUS makes no representations or warranties with respect to the accuracy or completeness of any information herein and may make changes to the information, specifications and product descriptions at any time without notice. SERIOUS products may contain design defects or errors known as errata which may cause the product to deviate from published specifications. Current characterized errata are available upon request. Use of SERIOUS products are in automotive, military, aircraft, space, life-saving or life-sustaining applications or in any systems where failure or malfunction may result in personal injury, death or severe property or environmental damage is entirely at the buyer's risk and buyer agrees to defend, indemnify and hold SERIOUS harmless from any and all damages, claims, suits or expenses resulting from such use.