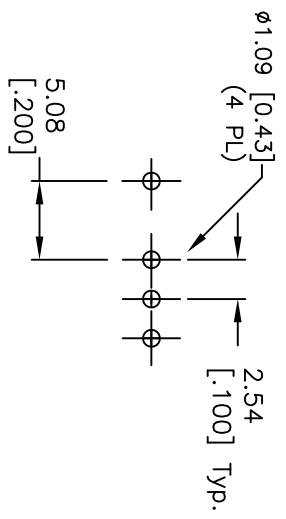
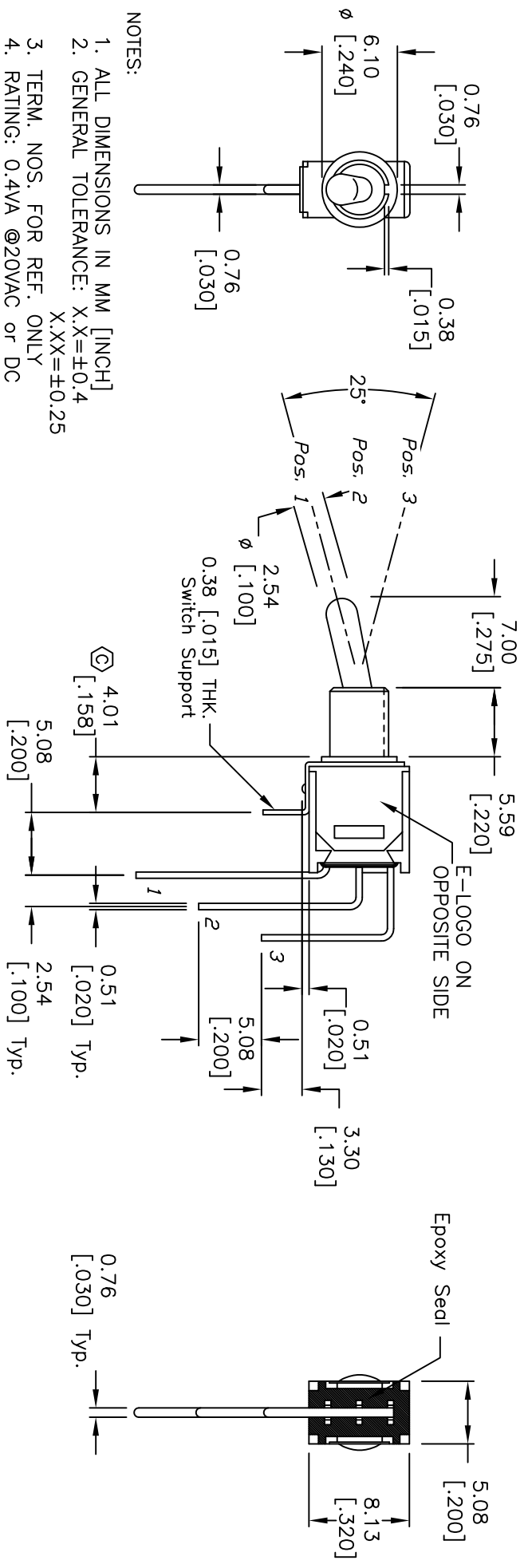


CIRCUIT: SPDT
CONTACT CONFIGURATION

| SWITCH FUNCTION | | |
|-----------------|--------|--------|
| POS. 1 | POS. 2 | POS. 3 |
| DN | NONE | DN |
| 2-3 | OPEN | 2-1 |



RECOMMENDED P.C.B. LAYOUT



NOTES:

1. ALL DIMENSIONS IN MM [INCH]
2. GENERAL TOLERANCE: X.X=±0.4
X.XX=±0.25
3. TERM. NOS. FOR REF. ONLY
4. RATING: 0.4VA @20VAC or DC
5. FIXED TERM. MOVING CONTACT:
Copper Alloy w/GOLD plating over
Nickel plate.
6. ELECTRICAL LIFE: 30,000 make-and-break cycle
at full load.
7. DIELECTRIC STRENGTH: 1,000 V RMS @sea level.
8. OPERATING TEMP.: -30°C to 85°C
9. ▲ DESIGNATE MAJOR FEATURE:

| REV. | ECN No. | DESCRIPTION | DATE | CHKD |
|------|---------|---------------------|---------|------|
| C | 19614 | CORRECT DIMENSION | 1/24/11 | BMA |
| B | 12110 | REVISED AND REDRAWN | 5/3/02 | CJB |

| TITLE | SCALE | DATE | DR | DWG | REV |
|--|-------|--------|-----|---------|-----|
| 200 MSP-1 T3 B4 M7 R E (GOLD CONTACTS) | 2:1 | 5/3/02 | CJB | T211016 | C |



THE INFORMATION CONTAINED IN THIS DOCUMENT IS PROPRIETARY TO E-SWITCH AND IS NOT TO BE COPIED OR TRANSFERRED