



**BOARD LEVEL COOLING - Channel 7021**

Channel 7021 is a series of channel board level heat sinks designed to cool TO-220 and TO-220-single gauge devices. Representative image only.



**ORDERING INFORMATION**

Part Number	Device Type
7021BG	TO-220, TO-220-single gauge
7021B-MTG	TO-220, TO-220-single gauge
7021B-TC12-MTG	TO-220, TO-220-single gauge
7021B-TC10-MTG	TO-220, TO-220-single gauge

**HEAT SINK DETAILS**

Property	Details
Material	Aluminum
Finish	Black Anodize
Device Attachment Options	Thermal Clip (Factory Applied)
Thermal Interface Material	-

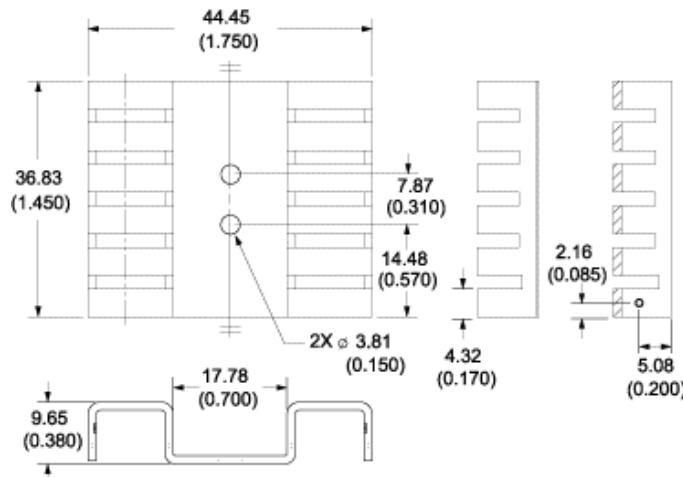
Property	Details
Heat Sink Width (mm)	44.45
Heat Sink Length (mm)	9.65
Heat Sink Height (mm)	36.83
Heat Sink Mounting Direction	Vertical

**MECHANICAL & PERFORMANCE**

Drawing dimensions are shown in mm, (in)

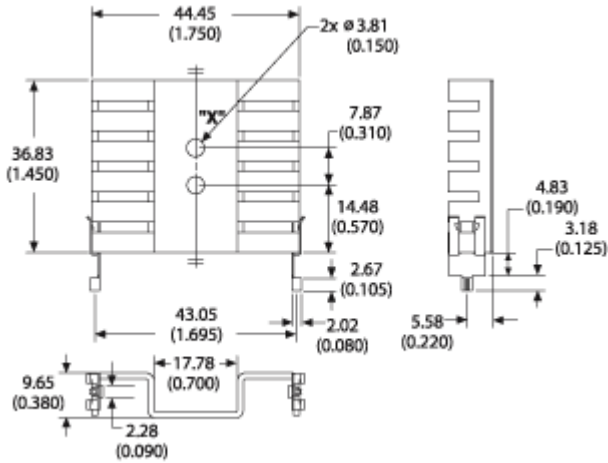
Part Number	"X" Dim	"Y" Dim	"Z" Dim
7021BG	-	-	-
7021B-MTG	20.77 (0.820)	3.81 (0.150)	2.95 (0.116)
7021B-TC12-MTG	21.59 (0.850)	3.81 (0.150)	3.10 (0.122)
7021B-TC10-MTG	21.59 (0.850)	3.81 (0.150)	3.10 (0.122)

Part Number: 7021BG

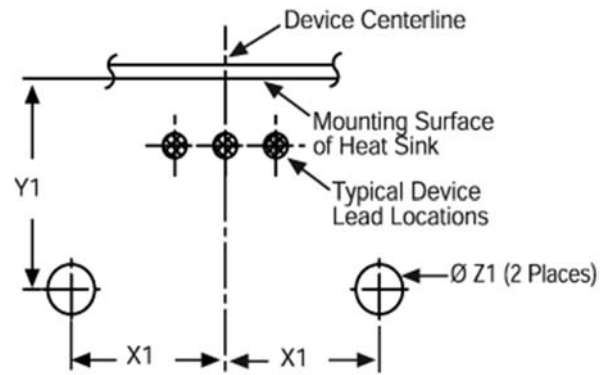


# Board Level Cooling – Channel 7021

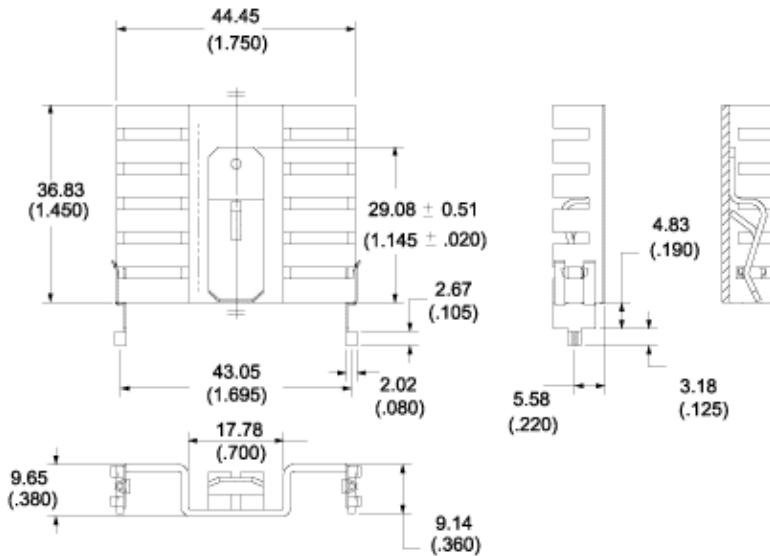
Part Number: 7021B-MTG



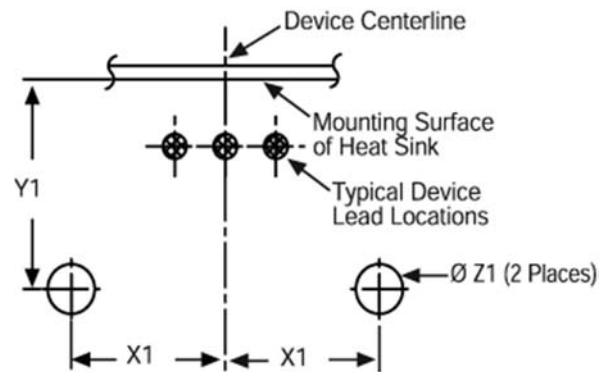
Mounting Details:



Part Number: 7021B-TC12-MTG

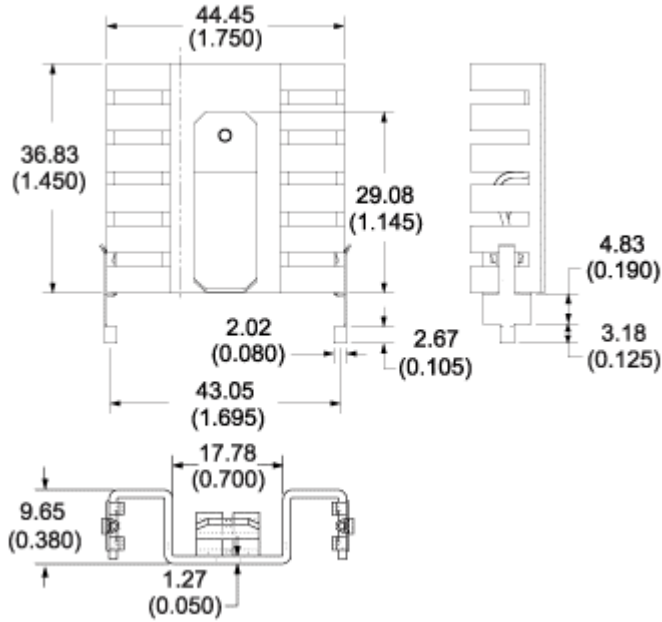


Mounting Details:



# Board Level Cooling – Channel 7021

Part Number: 7021B-TC10-MTG



*Mounting Details:*

